

- LEGEND**
- EXISTING TREES TO REMAIN
  - NATURALIZATION BUFFER PLANTING
  - DECIDUOUS TREE PLANTING
  - ORNAMENTAL TREE PLANTING
  - CONIFEROUS TREE PLANTING
  - SHRUB/PERENNIAL PLANTING
  - TOPSOIL + SOD
  - TOPSOIL + SEED
  - CONCRETE PAVING
  - BEACH STONES
  - ROCKERY STONES
  - WOOD PRIVACY FENCE
  - CHAIN LINK FENCE

1	OCT 16 2025	ISSUED FOR OPA/ZBA SUBMISSION	MB
no.	date	revision	by

**byPATH:**  
landscape architecture

4933 Old Brock Road  
Claremont, Ontario  
info@bypath.ca  
647-545-5809

ASSOCIATION OF LANDSCAPE ARCHITECTS  
ONARIO  
LESLIE KIELA  
MEMBER

These plans are the property of byPATH: landscape architecture inc. They may not be altered, revised, or modified in any way without the written consent of byPATH: landscape architecture inc.  
All information hereon to be checked and verified on site by the landscape contractor. Any discrepancies must be reported to, and clarified by the landscape architect before commencing work.

project  
**PROPOSED INDUSTRIAL DEVELOPMENT**  
12506 HEART LAKE ROAD  
CALEDON, ONTARIO  
MATTHEWS TRIBAL

drawing  
**OVERALL CONCEPT LANDSCAPE PLAN**

file start date  
SEPTEMBER, 2025  
by  
LK

scale\*  
1:1500  
file  
2340 V1-251016

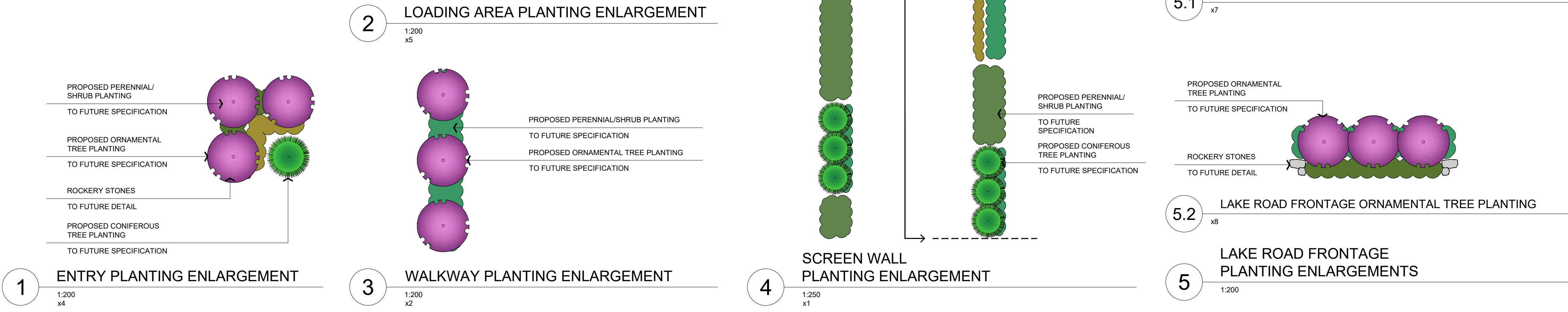
direction  
project no.

2340  
sheet no.  
**MP-1**

**TOWN OF CALEDON  
PLANNING  
RECEIVED**

October 17th, 2025

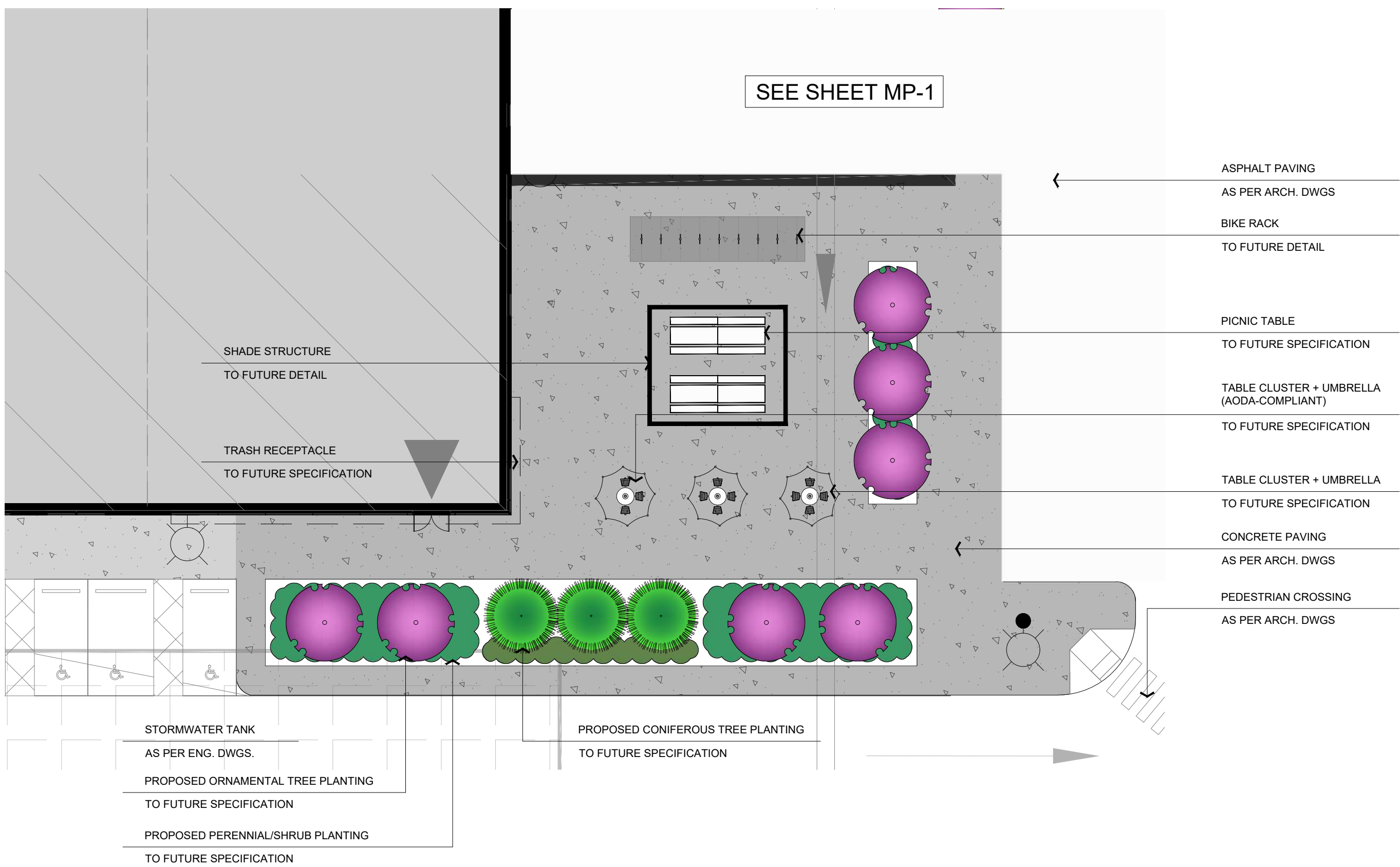
THE PLAN OUTLINES CONCEPTUAL  
LANDSCAPE TREATMENTS WHICH WILL BE  
REFINED AND CONFIRMED AS PART OF  
DETAILED DESIGN.





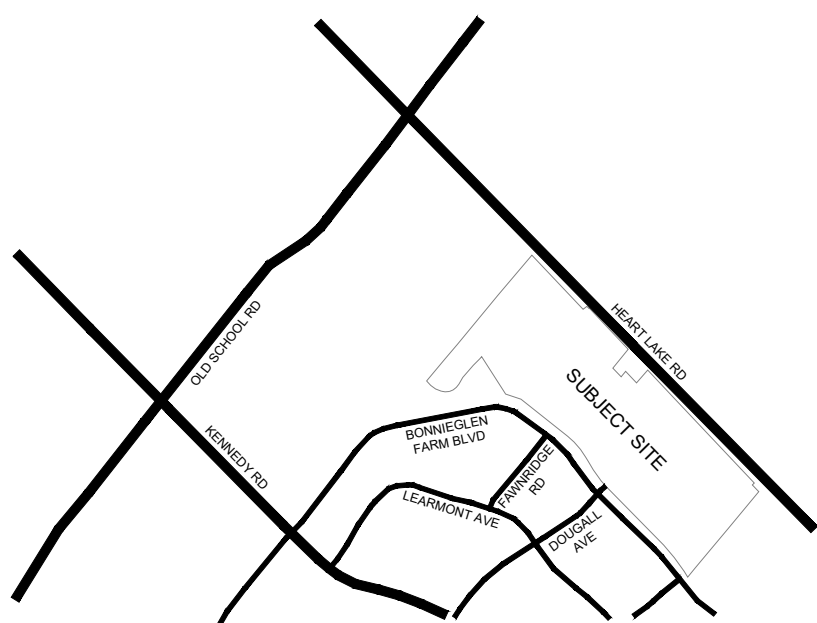


1 AMENITY AREA 'A'  
1:200

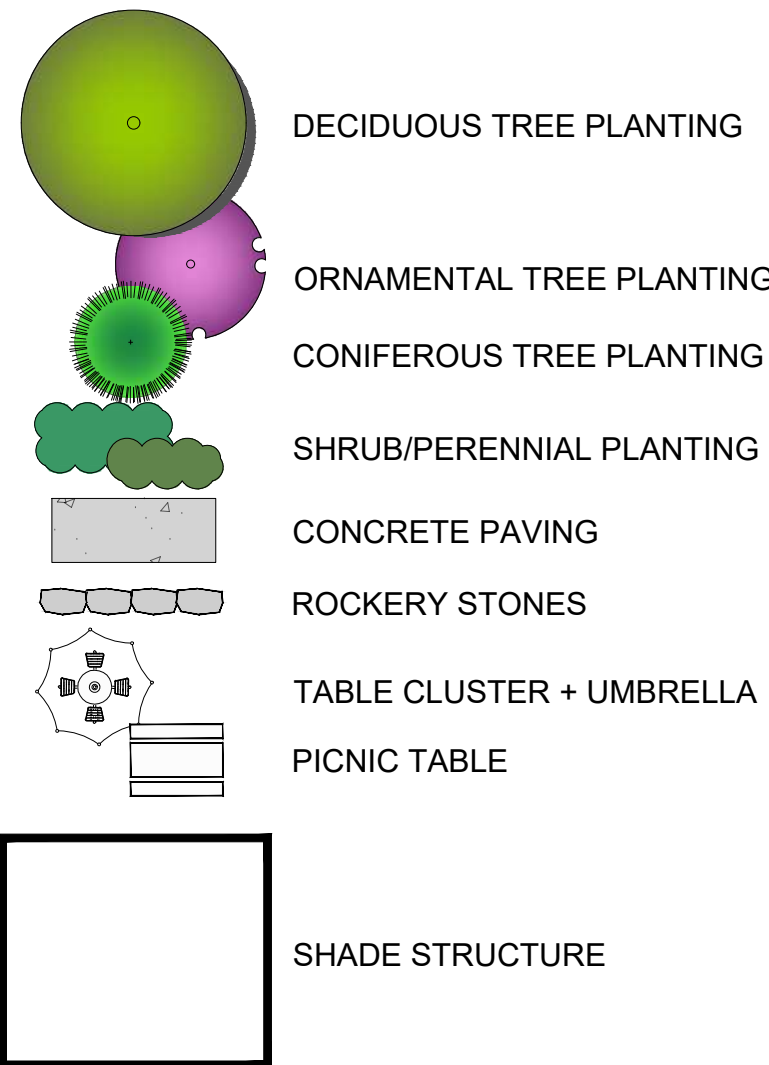


2 AMENITY AREA 'B'  
1:200

KEY MAP



LEGEND



1	OCT 16 2025	ISSUED FOR OPA/ZBA SUBMISSION	MB
no.	date	revision	by

byPATH: landscape architecture

4933 Old Brock Road  
Claremont, Ontario  
info@bypath.ca  
647-545-5809

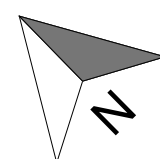


These plans are the property of byPATH: landscape architecture inc. They may not be altered, revised, or modified in any way without the written consent of byPATH: landscape architecture inc. All information hereon to be checked and verified on site by the landscape contractor. Any discrepancies must be reported to, and clarified by the landscape architect before commencing work.

project  
**PROPOSED INDUSTRIAL DEVELOPMENT**  
12506 HEART LAKE ROAD  
CALEDON, ONTARIO  
**MATTHEWS TRIBAL**

drawing  
**AMENITY AREA ENLARGEMENTS**

file start date	SEPTEMBER, 2025	by	LK
scale*	1:200	file	2340 V1-251016
direction		project no.	2340

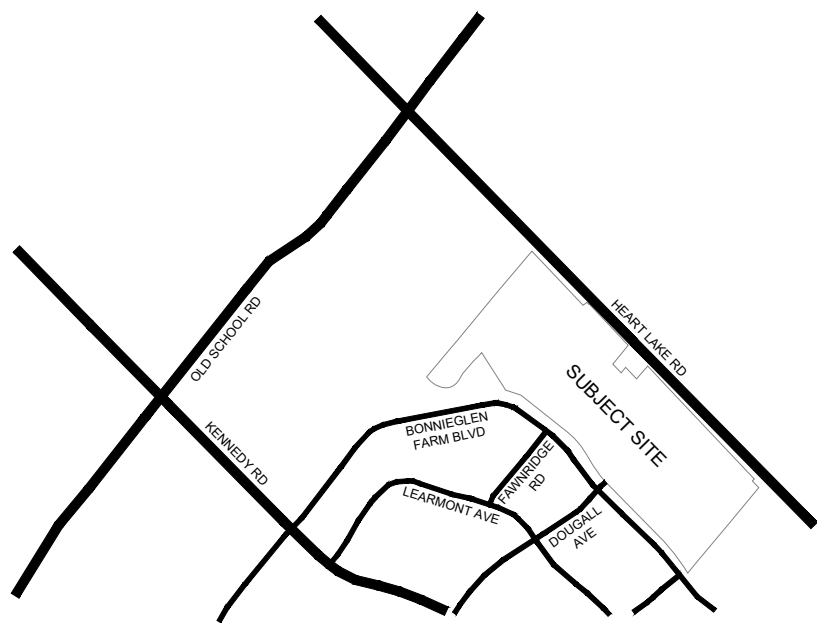


2340  
sheet no.  
**L-1**





## KEY MAP



## LEGEND

- EXISTING WOODLOT
- EXISTING TREE TO REMAIN
- DECIDUOUS TREE PLANTING
- CONIFEROUS TREE PLANTING
- SHRUB PLANTING
- TOPSOIL + SEED
- PERMANENT WATER LEVEL
- CHAIN LINK FENCE

1	OCT 16 2025	ISSUED FOR OPA/ZBA SUBMISSION	MB
no.	date	revision	by

## byPATH: landscape architecture

4933 Old Brock Road  
Claremont, Ontario  
info@bypath.ca  
647-545-5809

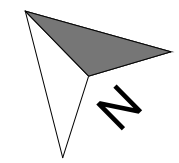


These plans are the property of byPATH: landscape architecture inc. They may not be altered, revised, or modified in any way without the written consent of byPATH: landscape architecture inc.  
All information hereon to be checked and verified on site by the landscape contractor. Any discrepancies must be reported to, and clarified by the landscape architect before commencing work.

project  
**PROPOSED INDUSTRIAL DEVELOPMENT**  
12506 HEART LAKE ROAD  
CALEDON, ONTARIO  
**MATTHEWS TRIBAL**

drawing  
**SWM POND LANDSCAPE PLAN**

file start date	by
SEPTEMBER, 2025	LK
scale*	file
1:800	2340 V1-251016
direction	project no.



2340  
sheet no.  
**L-2**