

DECEMBER 5, 2024

PROJECT NO: 0912-6881

SENT VIA: EMAIL

Town of Caledon
6311 Old Church Road
Caledon, ON L7C 1J6

**TOWN OF CALEDON
PLANNING
RECEIVED**
Dec 19, 2024

Region of Peel
Transportation Division, Public Works
10 Peel Centre Drive, Suite B, 4th Floor
Brampton, ON L6T 4B9

**Attn: Kavleen S. Younan, P.Eng., Transportation Engineer, Town of Caledon
Yifan Shen, Specialist, Transportation Development, Region of Peel**

**RE: TRANSPORTATION CONFORMANCE LETTER
ALLOA – MAYFIELD WEST I-III DRAFT PLAN**

Dear Kavleen and Yifan,

C.F. Crozier & Associates Inc. (Crozier) has been retained to prepare a Transportation Compliance Letter in support of the Mayfield West I-III Draft Plan development application. The Mayfield West I-III Draft Plan is comprised of parts of Lots 18 & 19, Concession 3, West of Hurontario Street, in the Town of Caledon, Regional Municipality of Peel. The Draft Plan is also located within the Alloa Secondary Plan and Alloa Phase 1 Tertiary Plan.

A Transportation Impact Study (TIS) (Crozier, December 2024) was prepared in support of the Alloa Phase 1 Tertiary Plan. The TIS comprehensively evaluated the impacts of Alloa Phase 1 Lands from a transportation perspective, identifying required mitigation measures as warranted. The Tertiary Plan was designed to comprise the intended individual Draft Plans such that the Tertiary Plan's road network and land use layout was reflective of the respective Draft Plans for each parcel.

The Transportation Conformance Letter builds on and accompanies the Alloa Phase 1 Tertiary Plan TIS (Crozier, December 2024), and is in support of the Draft Plan development application. The letter herein reviews the following:

- Site Context
- Development Proposal
- Site Generated Traffic Review
- Recommendations

1.0 Site Context

1.1 Subject Lands

The Mayfield West I-III Draft Plan is located within the Alloa Phase 1 Lands and covers an area of approximately 45.95 ha and is currently undeveloped greenfield lands. The Subject Site is located on the east side of the Alloa Phase 1 Lands and is generally bound by Chinguacousy Road to the east, and undeveloped greenfield lands to the north, south and west.

Figure 1 illustrates the site location.

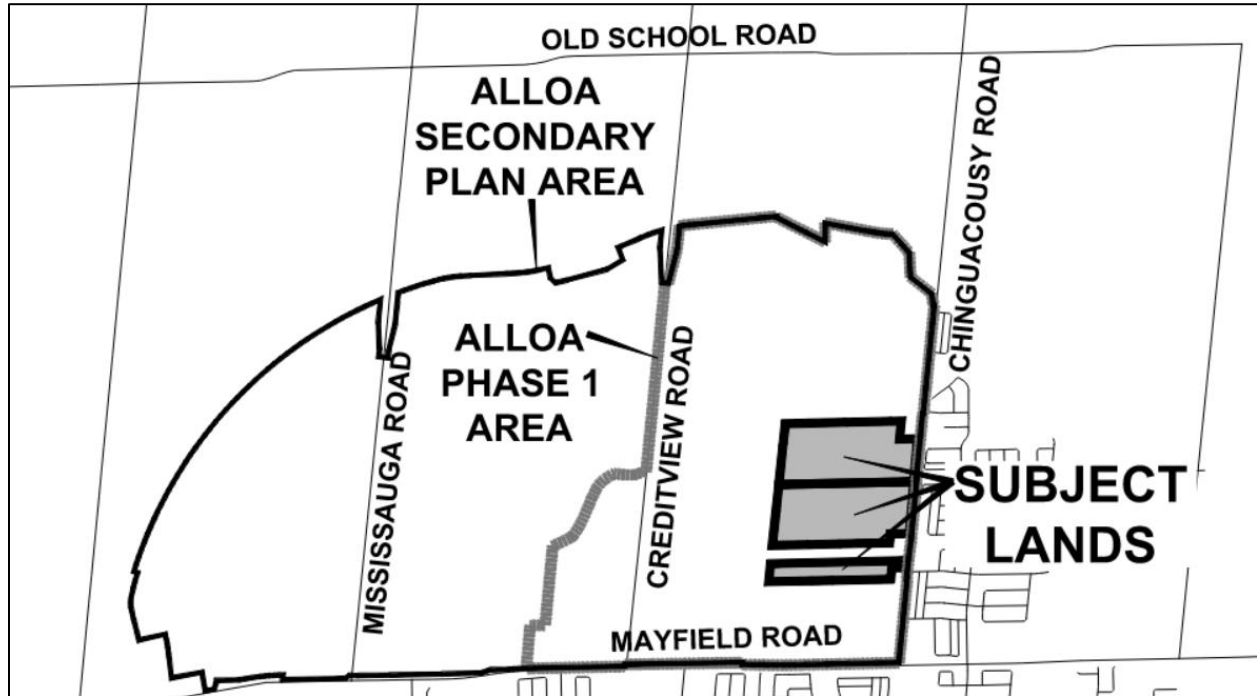


Figure 1: Site Location

1.2 Existing Transportation Context

Table 1 outlines the roadways near the Subject Site, including road and active transportation network features.

Table 1: Existing Roadway Network

Feature	Roadway		
	Mayfield Road	Chinguacousy Road	Tim Manley Avenue
Direction	Two-Way (East-West)	Two-Way (North-South)	Two-Way (East-West)
Span	Winston Churchill Blvd to Albion Vaughan Rd	Olde Base Line Rd to Mayfield Rd	Chinguacousy Rd to McLaughlin Rd
Jurisdiction	Region of Peel	Town of Caledon	Town of Caledon
Number of Travel Lanes	Two Lanes	Two Lanes	Two Lanes
Pedestrian Facilities	None	None	Sidewalk (Both Sides) ¹
Cycling Facilities	None	None	Bike Lanes (Both Sides) ¹

Note 1: Based on Tim Manley Avenue plan and profile drawings prepared as part of the McLaughlin Road and Spine Road Municipal Class Environmental Assessment – Environmental Study Report (ESR) (Wood, June 2019).

1.3 Future Transportation Context

Capital road network improvements are planned near the Mayfield West I-III Draft Plan Lands to support future traffic growth. In addition, a collector road network is proposed to service the Alloa Secondary Plan Area, with some road located within the Mayfield West I-III Draft Plan.

Table 2 outlines the future transportation improvements, relevant to the Mayfield West I-III Draft Plan.

Table 2: Future Transportation Improvements

Roadway	Improvement	Improvement Type
Mayfield Road	Widening to Six Lanes	Capital Work
Chinguacousy Road	Widening to Four Lanes	Capital Work
Highway 413	New Highway	Capital Work
Tim Manley Avenue (Street B in the Tertiary Plan)	Collector Road Extension	Alloa Secondary Plan Collector Road Network
Welsh Avenue (Street A in Tertiary Plan)	New Collector Road	Alloa Secondary Plan Collector Road Network
Alexander Gillespie Avenue (Street D in Tertiary Plan)	New Collector Road	Alloa Secondary Plan Collector Road Network

Further details regarding these improvements are included within the Alloa Phase 1 Tertiary Plan Transportation Impact Study (Crozier, December 2024).

Attachment 1 includes excerpts from the Alloa Phase 1 Tertiary Plan Transportation Impact Study (Crozier, December 2024).

2.0 Development Proposal

The Mayfield West I-III Draft Plan proposes a number of residential uses in addition to institutional and recreational uses. **Table 3** summarizes the Development Proposal.

Table 3: Development Proposal

Plan	Land Use		Statistic	Area
Tertiary Plan ¹	Residential	Low Density	421 units	12.05 ha
		Medium Density	311 units	5.64 ha
		Medium-High Density	614 units	3.71 ha
	Elementary School		20 jobs (40% of School jobs)	1.36 ha
	Parks		1 Neighbourhood Park	2.22 ha
Draft Plan	Residential	Low Density	444 units	12.05 ha
		Medium Density	411 units	5.64 ha
		Medium-High Density	557 units ²	3.71 ha
	Elementary School		Partial School Block (approx. 42%) ³	1.36 ha
	Parks		1 Neighbourhood Park	2.22 ha

Note 1: Mayfield West I-III Draft Plan represents Zones Y, Z, AA and AC.

Note 2: 150 units per hectare.

Note 3: Elementary school has a total area of 3.24 ha.

We note that only a portion of the school block is located within the Mayfield West I-III Draft Plan. While the school will be implemented once the draft plans comprising the entire school block are advance, we have included the partial school block within our review for completeness.

Attachment 2 includes the Draft Plan prepared by Glen Schnarr & Associates Inc and dated September 30, 2024.

3.0 Site Generated Traffic Review

For comparative purposes, trip generation rates were calculated based on the Alloa Phase 1 Tertiary Plan trip generation and development yield, as outlined in the Alloa Phase 1 Tertiary Plan Transportation Impact Study (Crozier, December 2024), given the non-linear nature of the trip

generation rates outlined in the Institute of Transportation Engineers (ITE) Trip Generation Manual, 11th Edition (September 2021).

Table 4 outlines the trip generation rates based on the Alloa Phase 1 Tertiary Plan trip generation and development yield.

Table 4: Trip Generation Rates

Land Use		Statistic	A.M.		P.M.	
			In	Out	In	Out
Commercial ¹		52,003 m ²	0.35/100 m ²	0.26/100 m ²	0.86/100 m ²	0.89/100 m ²
Residential	Low Density	2,171 units	0.10/unit	0.32/unit	0.40/unit	0.24/unit
	Medium Density	2,565 units	0.05/unit	0.18/unit	0.21/unit	0.13/unit
	Medium-High Density ¹	4,429 units	0.07/unit	0.26/unit	0.18/unit	0.11/unit
Elementary School		150 jobs	1.25/job	1.05/job	0.26/job	0.31/job

Note 1: Includes mixed use development yield.

Table 5 outlines the trip generation for the Mayfield West I-III Draft Plan.

Table 5: Trip Generation

Land Use	Statistic	A.M. Trips ¹			P.M. Trips ¹		
		In	Out	Total	In	Out	Total
Low Density Residential (LUC 210)	444 units	43	143	186	179	107	287
Medium Density Residential (LUC 220)	411 units	21	76	97	88	53	141
Medium-High Density Residential (LUC 221)	557 units	38	143	181	103	62	164
Elementary School (LUC 520)	20 jobs	25	21	46	5	6	11
Alloa Phase 1 Internal Trips ²	-	22	33	55	24	33	57
Total		149	416	566	399	261	660

Note 1: Rounding may cause the appearance of discrepancies.

Note 2: Based on the Tertiary Plan development yield. For the Draft Plan, the internal trips are scaled based on the development yield of the Tertiary Plan and Draft Plan

The Mayfield West I-III Draft Plan is expected to generate 566 and 660 two-way vehicle trips during the weekday a.m. and p.m. peak hours, respectively.

3.1 Tertiary Plan Comparison

The Alloa Phase 1 Tertiary Plan was split into zones for the purpose of trip distribution and assignment. The total Tertiary Plan trip generation was also divided into these zones, based on the proportional area of each zone in comparison to the total area for each land use. The Mayfield West I-III Draft Plan is representative of Zones Y, Z, AA, and AC, as outlined in the Alloa Phase 1 Transportation Impact Study (Crozier, December 2024).

Table 6 outlines the trip generation for the Mayfield West I-III Lands based on the Mayfield West I-III Draft Plan and the zonal approximation of the Alloa Phase 1 Lands Tertiary Plan.

Table 6: Trip Generation (Comparison)

Plan	Land Use	Statistic	A.M. Trips ¹			P.M. Trips ¹		
			In	Out	Total	In	Out	Total
Tertiary Plan Assumption	Low Density Residential (LUC 210)	421 units	41	136	177	170	102	272
	Medium Density Residential (LUC 220)	311 units	16	57	74	67	40	106
	Medium-High Density Residential (LUC 221)	614 units	42	158	200	113	68	181
	Elementary School (LUC 520)	20 jobs	25	21	46	5	6	11
	Alloa Phase 1 Internal Trips ²	-	22	32	53	23	31	54
	Total			145	404	549	378	247
Draft Plan	Low Density Residential (LUC 210)	444 units (+23 units)	43	143	186	179	107	287
	Medium Density Residential (LUC 220)	411 units (+100 units)	21	76	97	88	53	141
	Medium-High Density Residential (LUC 221)	557 units (-57 units)	38	143	181	103	62	164
	Elementary School (LUC 520)	20 jobs (+0 jobs)	25	21	46	5	6	11
	Alloa Phase 1 Internal Trips ²	-	22	33	55	24	33	57
	Total			149	416	566	399	261
Net Change			+4	+12	+16	+21	+14	+35

Note 1: Rounding may cause the appearance of discrepancies.

Note 2: Based on the Tertiary Plan development yield. For the Tertiary Plan, the internal trips are estimated by a zonal approach. For the Draft Plan, the internal trips are scaled based on the development yield of the Tertiary Plan and Draft Plan.

In comparison to trip generation for the Proposed Development outlined in the Alloa Phase 1 Tertiary Plan Transportation Impact Study, the Draft Plan is estimated to generate an additional

16 and 35 two-way vehicle trips during the weekday a.m. and p.m. peak hours, respectively. As the increase in trips are not significant (less than 10% increase), the Alloa Phase 1 Tertiary Plan Transportation Impact Study (Crozier, December 2024) conclusions are considered valid therefore, an updated traffic operations analysis was not prepared herein.

Attachment 1 includes excerpts from the Alloa Phase 1 Tertiary Plan Transportation Impact Study (Crozier, December 2024).

Finally, due to a planned aggressive buildout, it is expected that most of the Alloa Phase 1 collector road network will be in place prior to buildout of the subject Draft Plan. As a result, supplementary traffic analysis that considers additional phasing of this and potentially other nearby draft plans is not required since recommended improvements for the Tertiary Plan would be implemented.

4.0 Recommendations

The Alloa Phase 1 Tertiary Plan Transportation Impact Study (Crozier, December 2024) outlined recommendations to support the Alloa Phase 1 Lands. The section herein reviews the multi-modal transportation network recommendations as it relates to the Mayfield West I-III Draft Plan.

4.1 Automobile

Table 7 summarizes the automobile recommendations to accommodate the Alloa Phase 1 Tertiary Plan and to support the Mayfield West I-III Draft Plan.

Table 7: Alloa Phase 1 Tertiary Plan Relevant Recommendations

Location	Improvement	Responsibility
Chinguacousy Road & Tim Manley Avenue/Street B	Extend auxiliary turn lanes for the following movements: <ul style="list-style-type: none"> • NBR: 40 m • SBL: 55 m 	Town/ Proponent
	Implement auxiliary turn lanes for the following movements: <ul style="list-style-type: none"> • EBL: 60 m • NBL: 40 m • SBR: 35 m 	
Chinguacousy Road & Tweedhill Avenue/Welsh Avenue	Implement signal control.	Town/ Proponent
	Implement auxiliary turn lanes for the following movements: <ul style="list-style-type: none"> • EBL: 50 m • NBL: 20 m 	
Tim Manley Avenue & Alexander Gillespie Avenue	Implement all-way stop control.	Proponent
	Implement auxiliary turn lanes for the following movements: <ul style="list-style-type: none"> • EBL: 30 m • WBL: 30 m 	

Location	Improvement	Responsibility
Welsh Avenue & Alexander Gillespie Avenue	Implement all-way stop control.	Proponent
	Implement WBL auxiliary turn lane (15 m).	

In addition to the above recommendations, on-street parking is proposed, as outlined by the Parking Plan prepared by Glen Schnarr & Associates Inc.

Attachment 1 includes excerpts from the Alloa Phase 1 Tertiary Plan Transportation Impact Study (Crozier, December 2024). **Attachment 3** include the Parking Plan.

4.2 Active Transportation

Active transportation facilities, including sidewalks and pedestrian crossings, are proposed throughout the Draft Plan, as outlined in the Parking Plan prepared by Glen Schnarr & Associates Inc. We note that the pedestrian crossings identified the Pedestrian Circulation Plan are generally consistent with the considerations and recommendations outlined in the Alloa Phase 1 Tertiary Plan Transportation Impact Study (Crozier, December 2024).

Attachment 1 includes excerpts from the Alloa Phase 1 Tertiary Plan Transportation Impact Study (Crozier, December 2024). **Attachment 4** includes the Pedestrian Circulation Plan.

4.3 Transit

The Alloa Phase 1 Tertiary Plan Transportation Impact Study (Crozier, December 2024) outlined a proposed transit network to service the Alloa Phase 1 Lands. The Mayfield West I-III Draft Plan can be serviced by the proposed Brampton Transit Route 27 extension that operates along Tim Manley Avenue as well as the new transit route that operates along Alexander Gillespie Avenue and Tim Manley Avenue.

Attachment 5 includes the proposed transit network for the Alloa Phase 1 Lands.

5.0 Conclusions

The Mayfield West I-III Draft Plan is located within the Alloa Phase 1 Lands, for which a Transportation Impact Study (Crozier, December 2024) was prepared. Overall, there are no material changes for the Subject Development between the Draft Plan and the Alloa Phase 1 Tertiary Plan. As such, the analysis and conclusions outlined in the Alloa Phase 1 Tertiary Plan Transportation Impact Study (Crozier, December 2024) remains valid and are not updated herein.

Should you have any questions or require any further information, please do not hesitate to contact the undersigned.

Respectfully submitted by,

C.F. CROZIER & ASSOCIATES INC.



My-Linh Yee, EIT
Engineering Intern, Transportation

C.F. CROZIER & ASSOCIATES INC.



Aidan Hallsworth, EIT
Engineering Intern, Transportation

C.F. CROZIER & ASSOCIATES INC.



Michael A. Linton, M.A.Sc., P.Eng., Associate
Senior Project Manager, Transportation

C.F. CROZIER & ASSOCIATES INC.



Alexander Fleming, P. Eng., MBA, Partner
Director, Transportation

Enclosed

Attachment 1: Alloa Phase 1 Tertiary Plan Transportation Impact Study Excerpts

Attachment 2: Draft Plan

Attachment 3: Parking Plan

Attachment 4: Circulation Plan

Attachment 5: Proposed Transit Network

/MY

J:\2400\2448 - Alloa Landowners Group\6683 - Alloa Development Area\Letters\2024.10.17_Argo MW I-III Transportation Conformance Letter\2024.12.05 Argo MW I-III Transportation Conformance Letter.docx

Attachment 1:

Alloa Phase 1 Tertiary Plan Transportation Impact Study
Excerpts

TRANSPORTATION IMPACT STUDY

**ALLOA PHASE 1 LANDS
TERTIARY PLAN**

**TOWN OF CALEDON
REGION OF PEEL**

PREPARED FOR:

ALLOA PHASE 1 LANDOWNERS GROUP INC.

PREPARED BY:

**C.F. CROZIER & ASSOCIATES INC.
211 YONGE STREET, SUITE 600
TORONTO, ON M5B 1M4**

DECEMBER 2024

CFCA FILE NO. 2448-7006

The material in this report reflects best judgment in light of the information available at the time of preparation. Any use which a third party makes of this report, or any reliance on or decisions made based on it, are the responsibilities of such third parties. C.F. Crozier & Associates Inc. accepts no responsibility for damages, if any, suffered by any third party as a result of decisions made or actions based on this report.



1.2 Development Proposal

The Alloa Phase 1 Tertiary Plan proposes a mixed-use community comprising 26,724 population and jobs across a number of low, medium and high-density residential uses, in addition to commercial, institutional and recreational uses. As outlined in the Tertiary Plan and development statistics prepared by Glen Schnarr & Associates Inc., dated August 20, 2024, and June 3, 2024, respectively, the Alloa Phase 1 Lands consists of 7,203 residential units and 27,478 m² of commercial gross floor area, as well as mixed-use areas consisting of 1,962 residential units and 24,525 m² commercial gross floor area.

In addition to the existing road network and planned capital works by the Town of Caledon (Town), Region of Peel (Region) and Ontario Ministry of Transportation (MTO), the Tertiary Plan also proposes an internal network of collector and local roads, intended to support multimodal connectivity within the Secondary Plan area and to the external study road network.

Table 1 summarizes the Development Proposal.

Table 1: Development Proposal

Land Use	Type	Statistic ¹	Area ¹	Jobs/Population ¹
Commercial		27,478 m ²	12.49 ha	550 jobs
Mixed Use		24,525 m ²	9.81 ha	491 jobs
		1,962 units		4,061 people
Residential	Low Density	2,171 units	72.35 ha	7,901 people
	Medium Density	2,565 units	42.75 ha	8,465 people
	Medium-High Density	2,467 units	16.44 ha	5,106 people
Elementary School		3 schools	8.91 ha	150 jobs
Parks		-	15.52 ha	-

Note 1: Alloa Phase 1 statistics based on the latest Alloa Secondary Plan Development Statistics, dated June 3, 2024, from Glen Schnarr & Associates Inc.

Figure 2 illustrates the Alloa Phase 1 Tertiary Plan. **Appendix A** includes the Alloa Phase 1 Tertiary Plan as well as the proposed statistics.

LEGEND

RESIDENTIAL

- DETACHED
- TOWNHOUSE
- MEDIUM - HIGH DENSITY
- MIXED-USE

COMMERCIAL

- COMMERCIAL BLOCK

INSTITUTIONAL

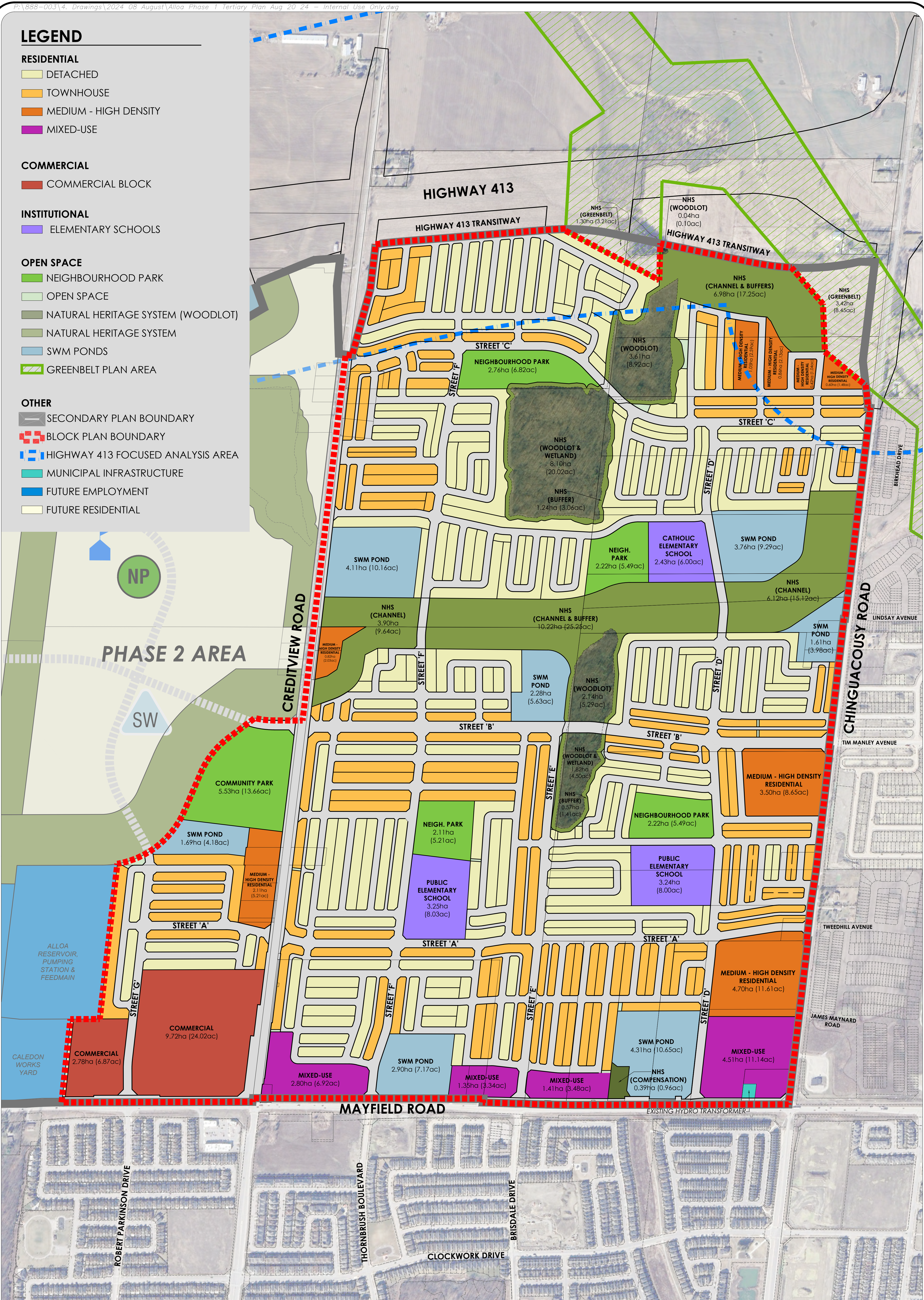
- ELEMENTARY SCHOOLS

OPEN SPACE

- NEIGHBOURHOOD PARK
- OPEN SPACE
- NATURAL HERITAGE SYSTEM (WOODLOT)
- NATURAL HERITAGE SYSTEM
- SWM PONDS
- GREENBELT PLAN AREA

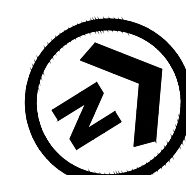
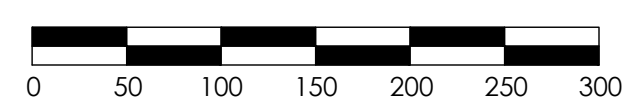
OTHER

- SECONDARY PLAN BOUNDARY
- BLOCK PLAN BOUNDARY
- HIGHWAY 413 FOCUSED ANALYSIS AREA
- MUNICIPAL INFRASTRUCTURE
- FUTURE EMPLOYMENT
- FUTURE RESIDENTIAL



ALLOA SECONDARY PLAN TERTIARY PLAN - PHASE 1

PART OF LOTS 18-21, CONCESSIONS 3 & 4, TOWNSHIP OF CHINGUACOUSY
TOWN OF CALEDON, REGIONAL MUNICIPALITY OF PEEL



SCALE 1:4000
AUGUST 20, 2024



Table 12: Town of Caledon Mode Share Targets

Mode	2041 Vision ¹	2051 Vision
Automobile Driver	68%	60%
Automobile Passenger (Carpool)	10%	13%
Transit	3%	6%
Walk	4%	6%
Cycle	1%	1%
Other ²	15%	14%
Total	100%	100%
<i>Sustainable Mode Share</i>	32%	40%

Note 1: Consistent with the Region of Peel's Long Range Transportation Plan (2019).

Note 2: Other includes motorcycle and school bus.

Appendix H outlines the relevant excerpts from the Town of Caledon MMTMP (June 2024).

4.1.5 Town of Caledon Active Transportation Plan

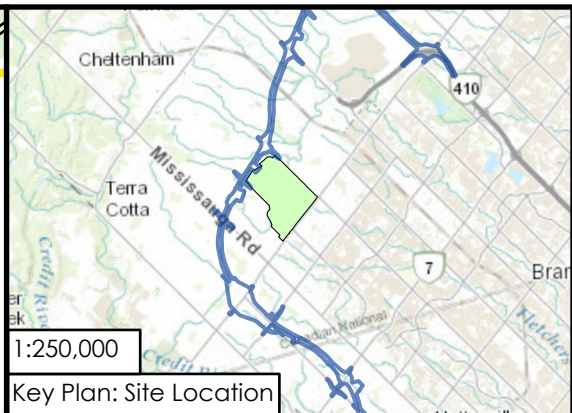
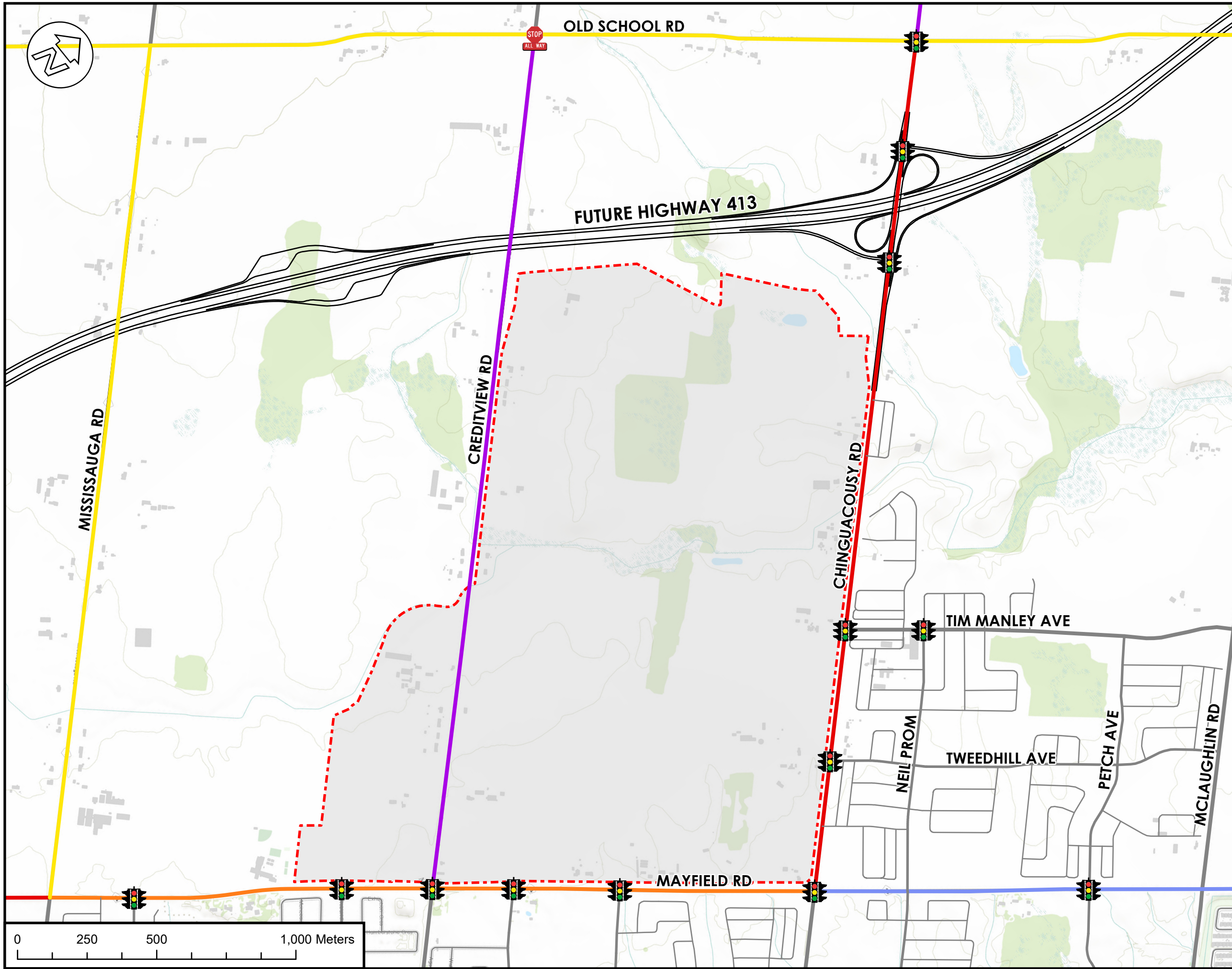
The Town of Caledon recently completed the Active Transportation Master Plan (June 2024), which supplements the Town's Multi-Modal Transportation Master Plan (Town of Caledon, June 2024) by providing more details and policies objectives concerning sidewalks, dedicated cycling facilities and trails. Notably, the plan identifies preferred design cross-sections for multi-use trails connecting neighbourhoods and as walking trails and provides a recommended active transportation network for on-road and off-road facilities. In addition, a sidewalk policy framework which identifies where sidewalks should be implemented, on one or both sides, was identified and has also been developed as part of this plan.

Appendix H outlines the relevant excerpts from the Town of Caledon Active Transportation Master Plan (June 2024).

4.2 Future Transportation Network

In the vicinity of the Alloa Phase 1 Lands, there are many planned transportation network improvements. Many of these improvements were identified in the relevant planning documents outlined in **Section 4.1**. This section herein reviews the relevant future background improvements.

Figure 6 summarizes the future road improvements and timings of these improvements within the study area.



Legend

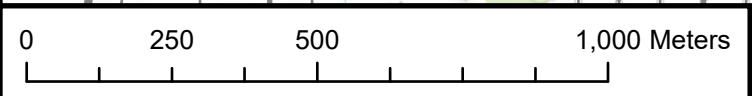
- Phase 1 Block Boundary
- Intersections
 - Signalized Intersection
 - Stop Controlled Intersection (All-Way)
- Preliminary Highway 413 Route
- Future Road Improvement
 - No Change
 - 2031 (2 to 4 lanes)
 - 2031 (2 to 5 lanes), 2041 (5 to 6 lanes)
 - 2031 (2 to 6 lanes)
 - 2041 (2 to 4 lanes)
 - 2051 (2 to 4 lanes)
 - Collector
 - Local

Figure Notes:

- Road Classifications per Town of Caledon Multi-Modal Transportation Master Plan and the City of Brampton OP Schedule B City Road Hierarchy
- Transit Network as per Future Caledon Official Plan 2024
- Highway 413 area and alignment as per 50% Preliminary Highway Design (Highway 413 Interactive Map, 2024)
- Traffic controls only provided for intersections within study area.

Project: Alcoa Phase 1 Tertiary Plan

Figure: Future Road Improvements and Timings



Drawn: D.M	Design: M.L.	Project No. 2448-7006
Date: 2024-10-04	GCS: NAD 1983	Scale: 1:13,000 Dwg. Fig.6

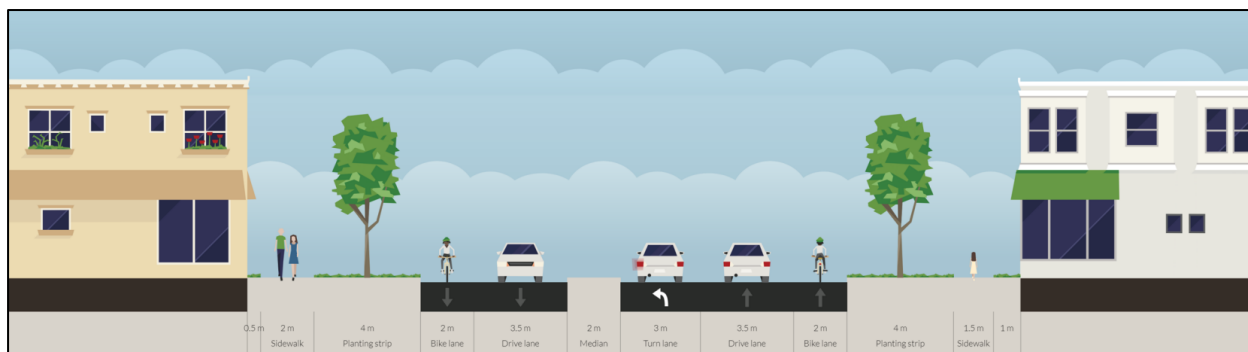


Figure 13: Tim Manley Avenue Cross-Section (29 m ROW) (Wood)

Appendix H includes the relevant Tim Manley Avenue excerpts.

4.2.6 Brampton Transit Expansion

There are transit expansion plans, as detailed in the Brampton Transit Public Information Session for the Annual Transit Service Plan (Brampton Transit, March 2024), that are of relevance to the study area. The following changes to existing transit operations in **Section 2.2** are detailed in the plan and are expected to be implemented in the near future:

- Route 25 (Edenbrook): While this proposed change does not directly impact the Subject Lands, a transit route option to service the completed elements of the adjacent Mayfield West Phase 2 community is outlined and is expected to be implemented in the future.
- NEW Route 504 (Züm Chinguacousy): Brampton Transit is planning to implement a Chinguacousy Züm service between 2024 and 2026. This new express transit route will operate Sandalwood Parkway and Steeles Avenue along Chinguacousy Road. The route is planned to continue east on Steeles Avenue, connecting at Sheridan College, Brampton Gateway, and at Bramalea GO, where the line terminates. The implementation of this service would result in several transit network changes, including the following:
 - Route 4/4A (Chinguacousy): The route will continue to operate local service, with realignment planned. Route 4 will operate along Sandalwood Parkway, Brisdale Road and Wanless Drive, and Route 4A will service Mount Pleasant GO Station via Bovaird Drive.
 - Route 104 (Chinguacousy Express): The current Route 104 will be replaced by the proposed Züm express transit route.
 - NEW Brisdale Drive Transit Route: A new transit route is planned along Brisdale Drive from and to Mount Pleasant GO Station, with the routing reaching and looping at Mayfield Road. This route will replace the current Route 4 service along Brisdale Drive.

The public information session also outlines long-term transit service concepts, including potential extensions and new transit routes into the Town of Caledon and the Alloa Community. These potential extensions and new transit routes are expected to be implemented in the future, and may be refined at a later stage.

Appendix H outlines the relevant future transit excerpts.

4.2.7 Natural Heritage System Multi-Use Trails

To support the creation of sustainable communities in the Town, the Town of Caledon's Active Transportation Master Plan (ATMP) outlines various active transportation improvements. In addition to the planned improvements outlined in **Section 4.2.1** to **Section 4.2.6**, the ATMP (Town of Caledon, June 2024) identifies multi-use trails, the Settlement Area Boundary Expansion Concept Trails, proposed along the natural heritage system near the Subject Site.

It is anticipated that these trail improvements will be completed in coordination with the Town to support surrounding developments, including the Proposed Development. As 2 of the planned multi-use trails are located within the Subject Lands, the neighbourhood connector and/or walking trail cross-sections are anticipated to be required to accommodate the natural heritage system trails.

Figure 14 outlines the neighbourhood connector and walk trail cross-section proposed in the Alloa Secondary Plan Transportation Needs Assessment (Crozier, July 2024).

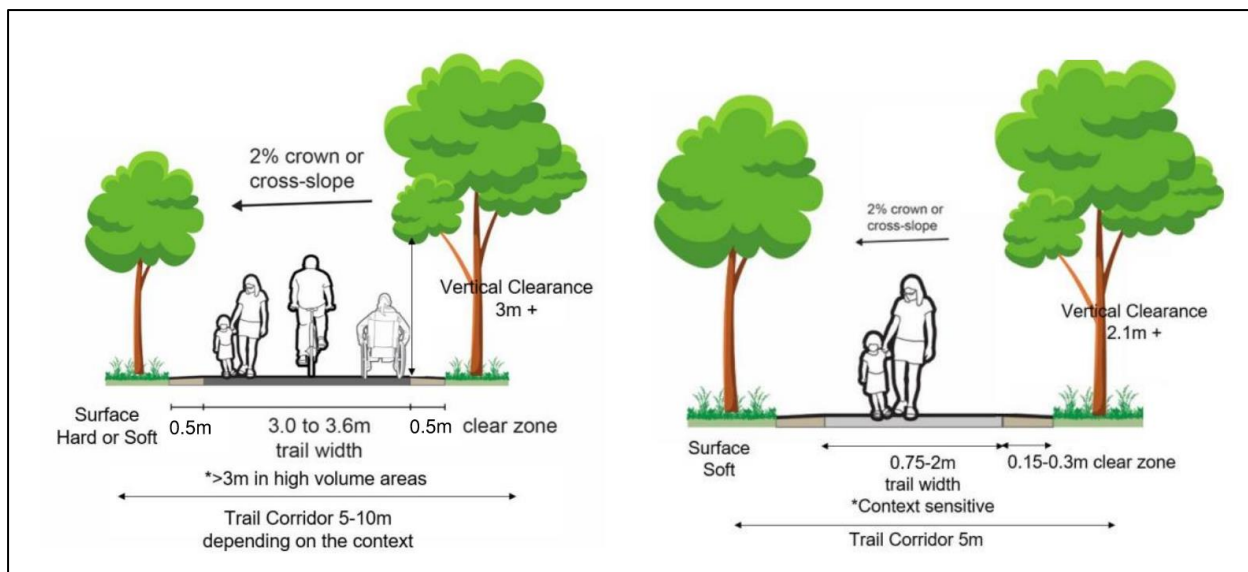


Figure 14: Natural Heritage System Trails - Cross-Section Options (Crozier)

We noted that these sections generally conform with the standard cross-section outlined in the Town of Caledon ATMP (Town of Caledon, June 2024), with the exception of the proposed 0.5 m clear zone, instead of 0.6 m.

Appendix H contains the relevant excerpts regarding the multi-use trails planned near and within the Subject Lands as highlighted in the Town of Caledon's ATMP (June 2024).

4.2.8 Summary

Table 13 summarizes the future roadway improvements in the study area.

Table 13: Planned Improvements in Study Area

Roadway	Improvement	Segment	Year	Source
Mayfield Road	Widening to Six Lanes (Ultimate)	Chinguacousy Road to Hurontario Street	2026	Mayfield Road Construction Timeline (February 2024)
	Widening to Four Lanes (Ultimate)	Winston Churchill Boulevard to Mississauga Road	2028	
	Widening to Five Lanes (Interim)	Mississauga Road to Chinguacousy Road	2028	
	Widening to Six Lanes (Ultimate)	Mississauga Road to Chinguacousy Road	2041	Region of Peel L RTP
Chinguacousy Road	Widening to Four Lanes	Mayfield Road to Mayfield West Phase 2 North Limits	2031	Chinguacousy Road Functional Design ¹
		Mayfield West Phase 2 North Limits to Old School Road	2041	
	Widening to Six Lanes	Bovaird Drive to Mayfield Road	2041	City of Brampton TMP Update
Old School Road	Widening to Four Lanes	Winston Churchill Boulevard to Gore Road	2041	Town of Caledon Draft MMTMP
Highway 413	New Highway	Highway 401 to Highway 400	2031	Assumed
Natural Heritage System Multi-Use Trails		Varies ²	2031	Assumed

Note 1: As confirmed with Town of Caledon staff. **Appendix B** includes the relevant correspondence.

Note 2: **Appendix H** includes the relevant Active Transportation Master Plan (Town of Caledon, June 2024) excerpts that outline the natural heritage system multi-use trail locations.

5.0 Future Background Network Review

This section reviews the future operations of the surrounding transportation network, in a similar approach that was applied to the existing conditions in **Section 3.0**. Consistent with the Existing Mobility Network Review, the automobile operations were reviewed using Synchro software and evaluated based on the Highway Capacity Manual methodology, while active transportation level of service was assigned based on criteria from the York Region Transportation Mobility Plan Guidelines (November 2016).

5.1 Pedestrian Network

The pedestrian level of service (LOS) was reviewed for future background conditions based on the York Region guidelines. **Appendix E** outlines the York Region pedestrian LOS definitions.

Table 14 and **Table 15** summarizes the 2031 and 2041 future background pedestrian LOS, respectively.

6.0 Alloa Secondary Plan Mobility Context

The Alloa Secondary Plan Transportation Needs Assessment (Crozier, July 2024) outlines a recommended mobility network for the Alloa Secondary Plan area. The section herein reviews the Alloa Secondary Plan transportation network as well as the key considerations specifically for the Alloa Phase 1 Tertiary Plan area.

Appendix N outlines the relevant excerpts from the Alloa Secondary Plan Transportation Needs Assessment (Crozier, July 2024).

6.1 Mobility Framework

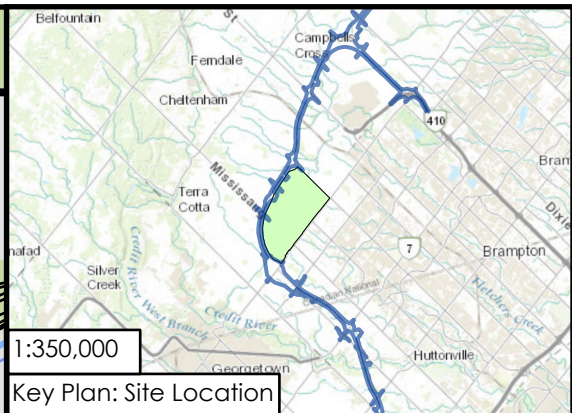
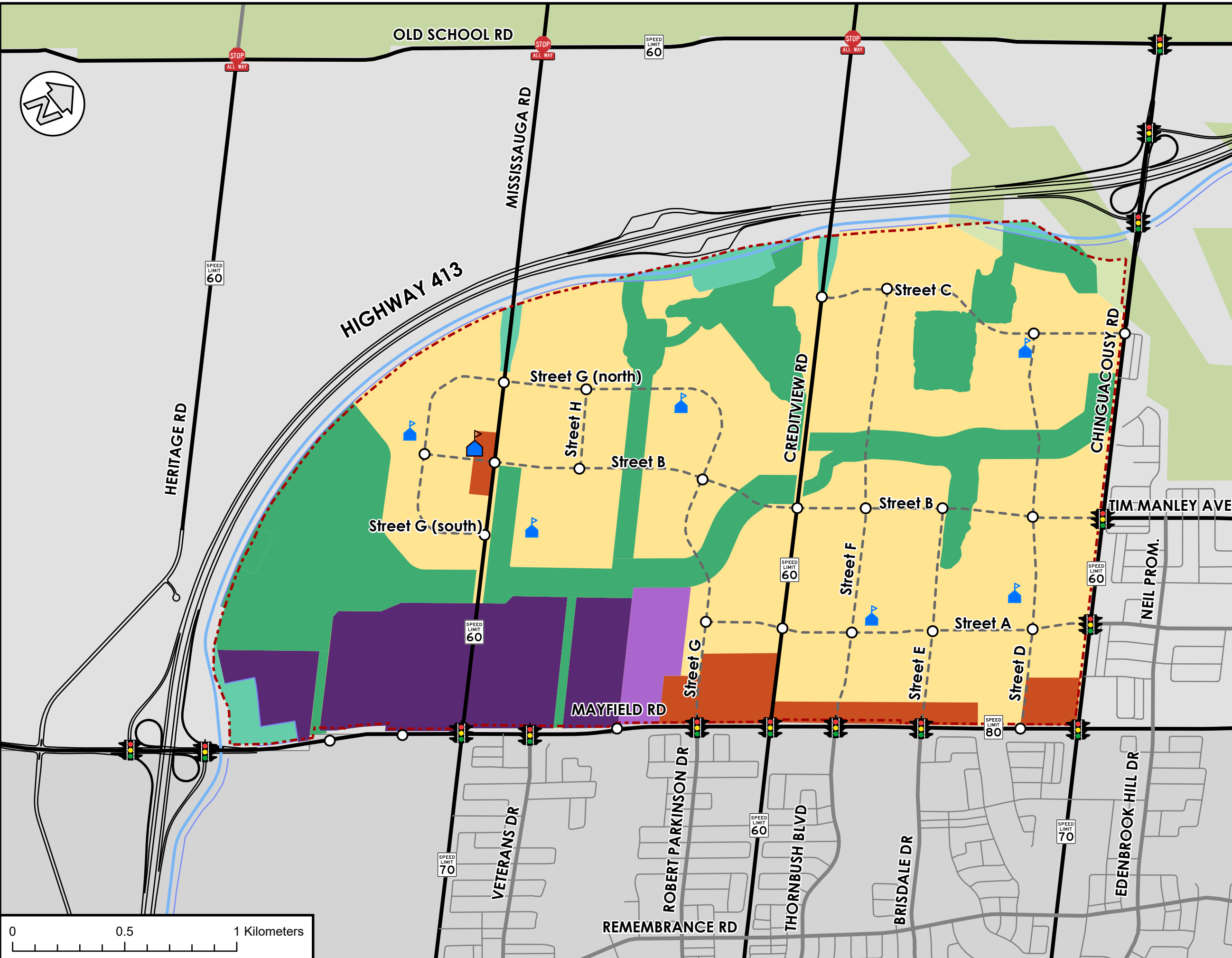
The Alloa Secondary Plan transportation network includes an internal collector road network, active transportation network, including a cycling and trail network, and transit network, comprised of potential routes and bus stop locations. This transportation network is reflected in the Alloa Phase 1 Tertiary Plan.

A preliminary transit network was recommended in Section 11.3 of the Alloa Secondary Plan Transportation Needs Assessment (Crozier, July 2024). The conceptual transit network proposed for the Alloa Secondary Plan was developed based on a review of a number of transit plans for the surrounding area and the existing transit operations, similar to those highlighted in **Section 2.2**, and a target to maximize transit stop coverage. The transit planning documents outlining future transit service patterns for the areas in proximity to the Subject Lands include:

- Brampton Transit Public Information Session for the Annual Transit Service Plan (March 2024)
- Town of Caledon Transit Feasibility Study (April 2019)
- Town of Caledon Multi-Modal Transportation Master Plan (June 2024)
- Highway 413 Transportation Corridor – Public Information Session #4 (MTO, October 2023)

This transit plan continues to be recommended upon full buildout of the Secondary Plan. However, these documents were reviewed to determine an interim future transit plan for Alloa Phase 1, which is detailed in **Section 11.0**.

Figure 23, **Figure 24**, and **Figure 25** illustrate the Alloa Secondary Plan's proposed road, active transportation and transit network, respectively.



Legend

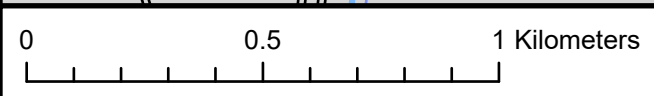
- Secondary Plan Boundary (dashed red line)
- Ontario Greenbelt (light green area)
- Road:
 - Arterial (thick black line)
 - Collector (medium black line)
 - Local (thin black line)
 - Proposed (dashed black line)
 - Preliminary Highway (Edge of Pavement) (blue line)
 - Preliminary Transitway (Right-of-Way) (blue line)
- Proposed Land Use Plan:
 - Developed Area (yellow)
 - Commercial (orange)
 - Prestige Employment (purple)
 - General Employment (light purple)
 - Natural Environment System Area (green)
 - Highway 413 Design Area (light green)
- Intersections:
 - Proposed Intersection (circle)
 - Signalized Intersection (traffic light symbol)
 - Stop Controlled Intersection (All-Way) (STOP ALL WAY sign)
- School (blue house icon)

Figure Notes:

- Road Classifications per Town of Caledon Multi-Modal Transportation Master Plan and the City of Brampton OP Schedule B City Road Hierarchy
- Transit Network as per Future Caledon Official Plan 2024
- Highway 413 area and alignment as per 50% Preliminary Highway Design (Highway 413 Interactive Map, 2024)
- Alloa Phase 1 Tertiary Plan has been slightly refined since the original submission of the Alloa Secondary Plan. (July 2024)

Project: Alloa Phase 1 Tertiary Plan

Figure: Alloa Secondary Plan Proposed Road Network (July 2024)



Drawn: D.M	Design: M.L.	Project No. 2448-7006
Date: 2024-10-04	GCS: NAD 1983	Scale: 1:16,000 Dwg. Fig.23

Table 41: External Primary Vehicle Trip Generation

Land Use	Statistic	A.M. Trips ¹			P.M. Trips ¹		
		In	Out	Total	In	Out	Total
Major Commercial	295,773 ft ²	95	72	167	238	245	483
Mixed Use	263,987 ft ²	85	64	149	212	219	431
	1,962 units	134	504	638	362	217	579
Low Density Residential	2,171 units	209	701	910	876	525	1,402
Medium Density Residential	2,565 units	133	474	607	549	329	878
Medium-High Density Residential	2,467 units	169	633	802	455	273	728
Elementary School	150 employees	188	158	346	39	47	86
Total		1,014	2,606	3,620	2,732	1,856	4,588

Note 1: Rounding may cause the appearance of discrepancies.

The Alloa Phase 1 Lands are expected to generate 3,620 and 4,588 two-way external primary vehicle trips during the weekday a.m. and p.m. peak hours. As noted in **Section 7.1.3**, a total of 398 and 408 two-way internal trips are also forecast for the Alloa Phase 1 Lands in the weekday a.m. and p.m. peak hours.

7.2 Zonal Disaggregation

Given the scale of the Alloa Phase 1 lands and the intent for consistency with future Draft Plan and Site Plan applications, the Subject Lands were divided into zones to better distribute traffic volumes. The zones are generally bound by the external arterial roads, internal collector road and/or other major features, such as the natural heritage system, Highway 413 corridor or the Alloa Phase 1 limits. However, property lines were also considered in the establishment of the zones to more easily compare the Tertiary Plan study to future Draft Plan applications for consistency.

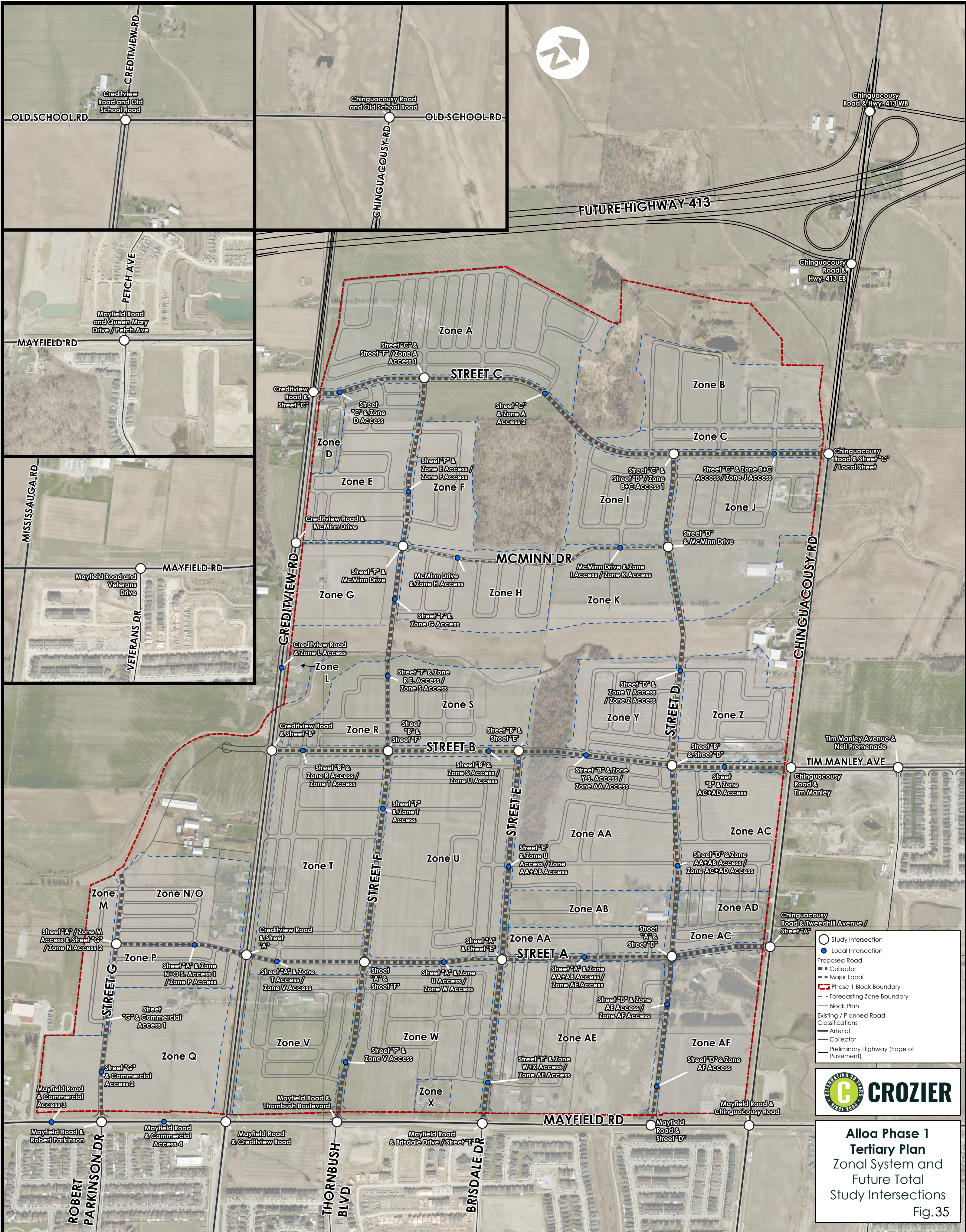
The Subject Lands were split into 32 zones, lettered A to AF. The site generated trips for each zone were determined based on the proportion of units, GFA or area of land uses in each zone relative to the overall Phase 1 Trip generation.

For the purpose of modelling, local road connections to each zone were assumed reflect a consolidation of several multiple minor local accesses in some cases. This approach was adopted for simplicity, to avoid modelling of an excessive number of accesses or local road connections.

As the property limits for future Draft Plan applications were factored into delineating the zones, in practice traffic within some zones may use a local road connection of an adjacent zone due network orientation and local street design. However, for the purpose of the analysis herein, the

trips associated with a particular zone were assigned to the local road connection within that zone. This approach allows for an easier comparison between trip assignment forecasts with the Tertiary Plan study and future reports prepared in support of Draft Plan application.

Figure 35 illustrates the zonal system and future total study intersections for the trip assignment.



Aloa Phase 1 Tertiary Plan
 Zonal System and Future Total Study Intersections
 Fig. 35

Table 42 outlines the external primary vehicle trip generation for each zone.

Table 42: Zonal External Primary Vehicle Trip Generation

Zone	A.M. Trips ¹			P.M. Trips ¹		
	In	Out	Total	In	Out	Total
Zone A	35	120	155	148	89	236
Zone B	44	161	205	130	78	208
Zone C	6	20	26	24	14	38
Zone D	3	10	13	12	7	19
Zone E	19	66	84	78	46	124
Zone F	11	38	49	47	28	75
Zone G	1	3	4	4	2	6
Zone H	18	60	78	75	45	120
Zone I	13	45	58	56	34	90
Zone J	18	62	80	76	46	122
Zone K	63	55	118	16	17	33
Zone L	10	37	47	27	16	43
Zone M	6	21	27	25	15	40
Zone N	8	28	36	33	20	52
Zone O	25	95	120	68	41	109
Zone P	8	27	34	32	19	52
Zone Q	95	72	167	238	245	483
Zone R	8	28	37	35	21	55
Zone S	10	34	44	41	24	65
Zone T	34	115	149	140	84	223
Zone U	80	114	194	86	59	145
Zone V	76	208	284	222	159	380
Zone W	30	90	120	102	67	169
Zone X	15	38	53	39	29	68
Zone Y	15	50	64	61	37	98
Zone Z	14	46	60	57	34	92
Zone AA	43	82	125	81	51	132
Zone AB	42	45	87	25	19	44
Zone AC	52	194	247	156	94	249
Zone AD	4	14	18	17	10	26
Zone AE	54	162	216	176	118	295
Zone AF	155	466	620	409	287	696
Total	1,014	2,606	3,620	2,732	1,856	4,588

Note 1: Rounding may cause the appearance of discrepancies.

Appendix K contains details related to the zonal system as well as the calculations and assumptions used for the zonal trip generation forecast.

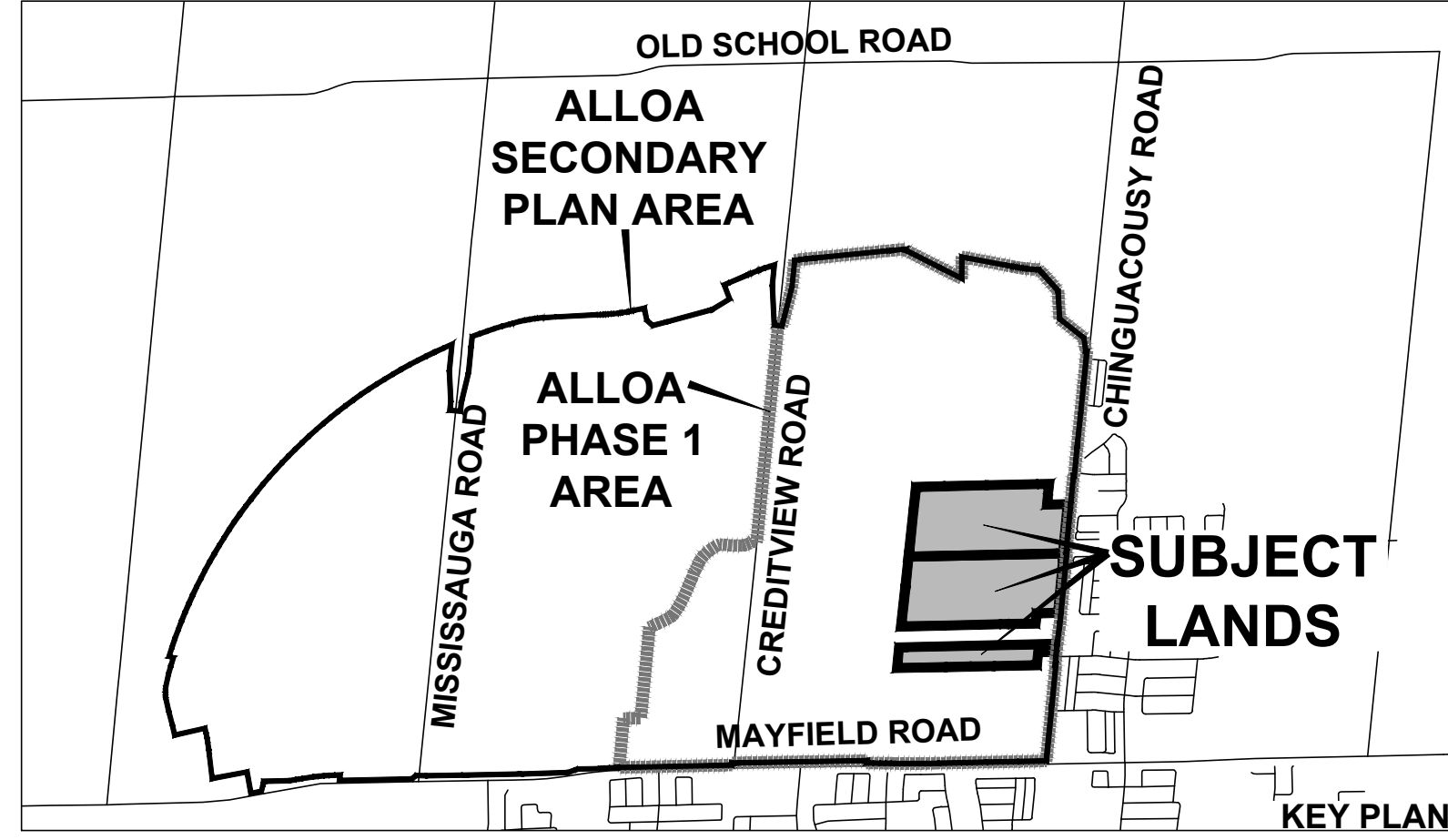
Zone	Component	Land Use Name	Land Use Code	Development Yield Assumed	Units	Trip Generation					
						A.M. Peak Hour			P.M. Peak Hour		
						IN	OUT	TOTAL	IN	OUT	TOTAL
Effective Rates	Detached Homes	Single Family Detached Housing	LUC210	2171	units	0.096	0.323	0.419	0.404	0.242	0.646
	Townhouses	Multi-Family Housing (Low-Rise)	LUC220	2565	units	0.052	0.185	0.237	0.214	0.128	0.342
	Residential Midrise Blocks	Multi-Family Housing (Mid-Rise)	LUC221	2467	units	0.068	0.257	0.325	0.185	0.111	0.295
	Mixed-Use Blocks (R)	Multi-Family Housing (Mid-Rise)	LUC221	1962	units	0.068	0.257	0.325	0.185	0.111	0.295
	Mixed-Use Blocks (C)	Shopping Centre	LUC820	24525	sq.m.	0.003	0.003	0.006	0.009	0.009	0.018
	Commercial Blocks	Shopping Centre	LUC820	27478	sq.m.	0.003	0.003	0.006	0.009	0.009	0.018
	Elementary Schools	Elementary School	LUC520	150	jobs	1.253	1.055	2.307	0.262	0.312	0.574
	Total	N/A	N/A								
Alloa Phase 1	Detached Homes	Single Family Detached Housing	LUC210	2171	units	209	701	910	876	525	1402
	Townhouses	Multi-Family Housing (Low-Rise)	LUC220	2565	units	133	474	607	549	329	878
	Residential Midrise Blocks	Multi-Family Housing (Mid-Rise)	LUC221	2467	units	169	633	802	455	273	728
	Mixed-Use Blocks (R)	Multi-Family Housing (Mid-Rise)	LUC221	1962	units	134	504	638	362	217	579
	Mixed-Use Blocks (C)	Shopping Centre	LUC820	24525	sq.m.	85	64	149	212	219	431
	Commercial Blocks	Shopping Centre	LUC820	27478	sq.m.	95	72	167	238	245	483
	Elementary Schools	Elementary School	LUC520	150	jobs	188	158	346	39	47	86
	Total	N/A	N/A		1014	2606	3620	2732	1856	4588	
A	Detached Homes	Single Family Detached Housing	LUC210	294.48	units	28	95	123	119	71	190
	Townhouses	Multi-Family Housing (Low-Rise)	LUC220	134.55	units	7	25	32	29	17	46
	Residential Midrise Blocks	Multi-Family Housing (Mid-Rise)	LUC221	0.00	units	0	0	0	0	0	0
	Mixed-Use Blocks (R)	Multi-Family Housing (Mid-Rise)	LUC221	0.00	units	0	0	0	0	0	0
	Mixed-Use Blocks (C)	Shopping Centre	LUC820	0.00	sq.m.	0	0	0	0	0	0
	Commercial Blocks	Shopping Centre	LUC820	0.00	sq.m.	0	0	0	0	0	0
	Elementary Schools	Elementary School	LUC520	0.00	jobs	0	0	0	0	0	0
	Total	N/A	N/A	N/A	35	120	155	148	89	236	
B	Detached Homes	Single Family Detached Housing	LUC210	56.78	units	5	18	24	23	14	37
	Townhouses	Multi-Family Housing (Low-Rise)	LUC220	58.37	units	3	11	14	12	7	20
	Residential Midrise Blocks	Multi-Family Housing (Mid-Rise)	LUC221	514.14	units	35	132	167	95	57	152
	Mixed-Use Blocks (R)	Multi-Family Housing (Mid-Rise)	LUC221	0.00	units	0	0	0	0	0	0
	Mixed-Use Blocks (C)	Shopping Centre	LUC820	0.00	sq.m.	0	0	0	0	0	0
	Commercial Blocks	Shopping Centre	LUC820	0.00	sq.m.	0	0	0	0	0	0
	Elementary Schools	Elementary School	LUC520	0.00	jobs	0	0	0	0	0	0
	Total	N/A	N/A	N/A	44	161	205	130	78	208	
C	Detached Homes	Single Family Detached Housing	LUC210	3.21	units	0	1	1	1	1	2
	Townhouses	Multi-Family Housing (Low-Rise)	LUC220	104.37	units	5	19	25	22	13	36
	Residential Midrise Blocks	Multi-Family Housing (Mid-Rise)	LUC221	0.00	units	0	0	0	0	0	0
	Mixed-Use Blocks (R)	Multi-Family Housing (Mid-Rise)	LUC221	0.00	units	0	0	0	0	0	0
	Mixed-Use Blocks (C)	Shopping Centre	LUC820	0.00	sq.m.	0	0	0	0	0	0
	Commercial Blocks	Shopping Centre	LUC820	0.00	sq.m.	0	0	0	0	0	0
	Elementary Schools	Elementary School	LUC520	0.00	jobs	0	0	0	0	0	0
	Total	N/A	N/A	N/A	6	20	26	24	14	38	
D	Detached Homes	Single Family Detached Housing	LUC210	0.00	units	0	0	0	0	0	0
	Townhouses	Multi-Family Housing (Low-Rise)	LUC220	54.07	units	3	10	13	12	7	19
	Residential Midrise Blocks	Multi-Family Housing (Mid-Rise)	LUC221	0.00	units	0	0	0	0	0	0
	Mixed-Use Blocks (R)	Multi-Family Housing (Mid-Rise)	LUC221	0.00	units	0	0	0	0	0	0

V	Townhouses	Multi-Family Housing (Low-Rise)	LUC220	57.68	units	3	11	14	12	7	20
	Residential Midrise Blocks	Multi-Family Housing (Mid-Rise)	LUC221	0.00	units	0	0	0	0	0	0
	Mixed-Use Blocks (R)	Multi-Family Housing (Mid-Rise)	LUC221	545.70	units	37	140	177	101	60	161
	Mixed-Use Blocks (C)	Shopping Centre	LUC820	6821.26	sq.m.	24	18	41	59	61	120
	Commercial Blocks	Shopping Centre	LUC820	0.00	sq.m.	0	0	0	0	0	0
	Elementary Schools	Elementary School	LUC520	0.00	jobs	0	0	0	0	0	0
	Total	N/A	N/A	N/A		76	208	284	222	159	380
W/X	Detached Homes	Single Family Detached Housing	LUC210	88.82	units	9	29	37	36	21	57
	Townhouses	Multi-Family Housing (Low-Rise)	LUC220	126.82	units	7	23	30	27	16	43
	Residential Midrise Blocks	Multi-Family Housing (Mid-Rise)	LUC221	0.00	units	0	0	0	0	0	0
	Mixed-Use Blocks (R)	Multi-Family Housing (Mid-Rise)	LUC221	131.69	units	9	34	43	24	15	39
	Mixed-Use Blocks (C)	Shopping Centre	LUC820	1646.17	sq.m.	6	4	10	14	15	29
	Commercial Blocks	Shopping Centre	LUC820	0.00	sq.m.	0	0	0	0	0	0
	Elementary Schools	Elementary School	LUC520	0.00	jobs	0	0	0	0	0	0
Total	N/A	N/A	N/A		30	90	120	102	67	169	
W/X	Detached Homes	Single Family Detached Housing	LUC210	0.00	units	0	0	0	0	0	0
	Townhouses	Multi-Family Housing (Low-Rise)	LUC220	0.00	units	0	0	0	0	0	0
	Residential Midrise Blocks	Multi-Family Housing (Mid-Rise)	LUC221	0.00	units	0	0	0	0	0	0
	Mixed-Use Blocks (R)	Multi-Family Housing (Mid-Rise)	LUC221	131.69	units	9	34	43	24	15	39
	Mixed-Use Blocks (C)	Shopping Centre	LUC820	1646.17	sq.m.	6	4	10	14	15	29
	Commercial Blocks	Shopping Centre	LUC820	0.00	sq.m.	0	0	0	0	0	0
	Elementary Schools	Elementary School	LUC520	0.00	jobs	0	0	0	0	0	0
Total	N/A	N/A	N/A		15	38	53	39	29	68	
Y	Detached Homes	Single Family Detached Housing	LUC210	130.89	units	13	42	55	53	32	85
	Townhouses	Multi-Family Housing (Low-Rise)	LUC220	39.57	units	2	7	9	8	5	14
	Residential Midrise Blocks	Multi-Family Housing (Mid-Rise)	LUC221	0.00	units	0	0	0	0	0	0
	Mixed-Use Blocks (R)	Multi-Family Housing (Mid-Rise)	LUC221	0.00	units	0	0	0	0	0	0
	Mixed-Use Blocks (C)	Shopping Centre	LUC820	0.00	sq.m.	0	0	0	0	0	0
	Commercial Blocks	Shopping Centre	LUC820	0.00	sq.m.	0	0	0	0	0	0
	Elementary Schools	Elementary School	LUC520	0.00	jobs	0	0	0	0	0	0
Total	N/A	N/A	N/A		15	50	64	61	37	98	
Z	Detached Homes	Single Family Detached Housing	LUC210	115.61	units	11	37	48	47	28	75
	Townhouses	Multi-Family Housing (Low-Rise)	LUC220	49.52	units	3	9	12	11	6	17
	Residential Midrise Blocks	Multi-Family Housing (Mid-Rise)	LUC221	0.00	units	0	0	0	0	0	0
	Mixed-Use Blocks (R)	Multi-Family Housing (Mid-Rise)	LUC221	0.00	units	0	0	0	0	0	0
	Mixed-Use Blocks (C)	Shopping Centre	LUC820	0.00	sq.m.	0	0	0	0	0	0
	Commercial Blocks	Shopping Centre	LUC820	0.00	sq.m.	0	0	0	0	0	0
	Elementary Schools	Elementary School	LUC520	0.00	jobs	0	0	0	0	0	0
Total	N/A	N/A	N/A		14	46	60	57	34	92	
AA/AB	Detached Homes	Single Family Detached Housing	LUC210	165.96	units	16	54	70	67	40	107
	Townhouses	Multi-Family Housing (Low-Rise)	LUC220	39.49	units	2	7	9	8	5	14
	Residential Midrise Blocks	Multi-Family Housing (Mid-Rise)	LUC221	0.00	units	0	0	0	0	0	0
	Mixed-Use Blocks (R)	Multi-Family Housing (Mid-Rise)	LUC221	0.00	units	0	0	0	0	0	0
	Mixed-Use Blocks (C)	Shopping Centre	LUC820	0.00	sq.m.	0	0	0	0	0	0
	Commercial Blocks	Shopping Centre	LUC820	0.00	sq.m.	0	0	0	0	0	0
	Elementary Schools	Elementary School	LUC520	20.00	jobs	25	21	46	5	6	11
Total	N/A	N/A	N/A		43	82	125	81	51	132	

AA/AB	Detached Homes	Single Family Detached Housing	LUC210	41.49	units	4	13	17	17	10	27
	Townhouses	Multi-Family Housing (Low-Rise)	LUC220	0.00	units	0	0	0	0	0	0
	Residential Midrise Blocks	Multi-Family Housing (Mid-Rise)	LUC221	0.00	units	0	0	0	0	0	0
	Mixed-Use Blocks (R)	Multi-Family Housing (Mid-Rise)	LUC221	0.00	units	0	0	0	0	0	0
	Mixed-Use Blocks (C)	Shopping Centre	LUC820	0.00	sq.m.	0	0	0	0	0	0
	Commercial Blocks	Shopping Centre	LUC820	0.00	sq.m.	0	0	0	0	0	0
	Elementary Schools	Elementary School	LUC520	30.00	jobs	38	32	69	8	9	17
	Total	N/A	N/A	N/A		42	45	87	25	19	44
AC/AD	Detached Homes	Single Family Detached Housing	LUC210	8.86	units	1	3	4	4	2	6
	Townhouses	Multi-Family Housing (Low-Rise)	LUC220	182.19	units	9	34	43	39	23	62
	Residential Midrise Blocks	Multi-Family Housing (Mid-Rise)	LUC221	614.26	units	42	158	200	113	68	181
	Mixed-Use Blocks (R)	Multi-Family Housing (Mid-Rise)	LUC221	0.00	units	0	0	0	0	0	0
	Mixed-Use Blocks (C)	Shopping Centre	LUC820	0.00	sq.m.	0	0	0	0	0	0
	Commercial Blocks	Shopping Centre	LUC820	0.00	sq.m.	0	0	0	0	0	0
	Elementary Schools	Elementary School	LUC520	0.00	jobs	0	0	0	0	0	0
	Total	N/A	N/A	N/A		52	194	247	156	94	249
AC/AD	Detached Homes	Single Family Detached Housing	LUC210	3.45	units	0	1	1	1	1	2
	Townhouses	Multi-Family Housing (Low-Rise)	LUC220	70.85	units	4	13	17	15	9	24
	Residential Midrise Blocks	Multi-Family Housing (Mid-Rise)	LUC221	0.00	units	0	0	0	0	0	0
	Mixed-Use Blocks (R)	Multi-Family Housing (Mid-Rise)	LUC221	0.00	units	0	0	0	0	0	0
	Mixed-Use Blocks (C)	Shopping Centre	LUC820	0.00	sq.m.	0	0	0	0	0	0
	Commercial Blocks	Shopping Centre	LUC820	0.00	sq.m.	0	0	0	0	0	0
	Elementary Schools	Elementary School	LUC520	0.00	jobs	0	0	0	0	0	0
	Total	N/A	N/A	N/A		4	14	18	17	10	26
AE	Detached Homes	Single Family Detached Housing	LUC210	0.00	units	0	0	0	0	0	0
	Townhouses	Multi-Family Housing (Low-Rise)	LUC220	447.54	units	23	83	106	96	57	153
	Residential Midrise Blocks	Multi-Family Housing (Mid-Rise)	LUC221	0.00	units	0	0	0	0	0	0
	Mixed-Use Blocks (R)	Multi-Family Housing (Mid-Rise)	LUC221	274.43	units	19	70	89	51	30	81
	Mixed-Use Blocks (C)	Shopping Centre	LUC820	3430.35	sq.m.	12	9	21	30	31	60
	Commercial Blocks	Shopping Centre	LUC820	0.00	sq.m.	0	0	0	0	0	0
	Elementary Schools	Elementary School	LUC520	0.00	jobs	0	0	0	0	0	0
	Total	N/A	N/A	N/A		54	162	216	176	118	295
AF	Detached Homes	Single Family Detached Housing	LUC210	0.00	units	0	0	0	0	0	0
	Townhouses	Multi-Family Housing (Low-Rise)	LUC220	0.00	units	0	0	0	0	0	0
	Residential Midrise Blocks	Multi-Family Housing (Mid-Rise)	LUC221	824.46	units	56	212	268	152	91	243
	Mixed-Use Blocks (R)	Multi-Family Housing (Mid-Rise)	LUC221	878.48	units	60	225	286	162	97	259
	Mixed-Use Blocks (C)	Shopping Centre	LUC820	10981.05	sq.m.	38	29	67	95	98	193
	Commercial Blocks	Shopping Centre	LUC820	0.00	sq.m.	0	0	0	0	0	0
	Elementary Schools	Elementary School	LUC520	0.00	jobs	0	0	0	0	0	0
	Total	N/A	N/A	N/A		155	466	620	409	287	696
Total						1014	2606	3620	2732	1856	4588

Attachment 2:

Draft Plan



DRAFT PLAN OF SUBDIVISION
ARGO MAYFIELD WEST I LIMITED,
ARGO MAYFIELD WEST II LIMITED &
ARGO MAYFIELD WEST III LIMITED
FILE # 21T-___C

PART OF LOTS 18 & 19, CONCESSION 3,
 WEST OF HURONTARIO STREET
 (GEOGRAPHIC TOWNSHIP OF CHINGUACOUSY)
 TOWN OF CALEDON
 REGIONAL MUNICIPALITY OF PEEL

SURVEYORS CERTIFICATE
 I HEREBY CERTIFY THAT THE BOUNDARIES OF THE LANDS TO BE SUBDIVIDED AS SHOWN ON THIS PLAN AND THEIR RELATIONSHIP TO ADJACENT LANDS ARE CORRECTLY AND ACCURATELY SHOWN.

SIGNED: *A. U. KUMARANAYAKE* DATE: APR. 23, 2024
A. U. KUMARANAYAKE, O.L.S.
 R-P E SURVEYING LTD.
 643 CHRISLEA ROAD, SUITE 7
 WOODBRIDGE ON, L4L 8A3
 PHONE: (416) 635-5000

ADDITIONAL INFORMATION
 (UNDER SECTION 51(17) OF THE PLANNING ACT) INFORMATION REQUIRED BY CLAUSES A, B, C, D, E, F, G, J & L ARE SHOWN ON THE DRAFT AND KEY PLANS.

- H) MUNICIPAL AND PIPED WATER TO BE PROVIDED
- I) SANDY LOAM AND CLAY LOAM
- K) SANITARY AND STORM SEWERS TO BE PROVIDED

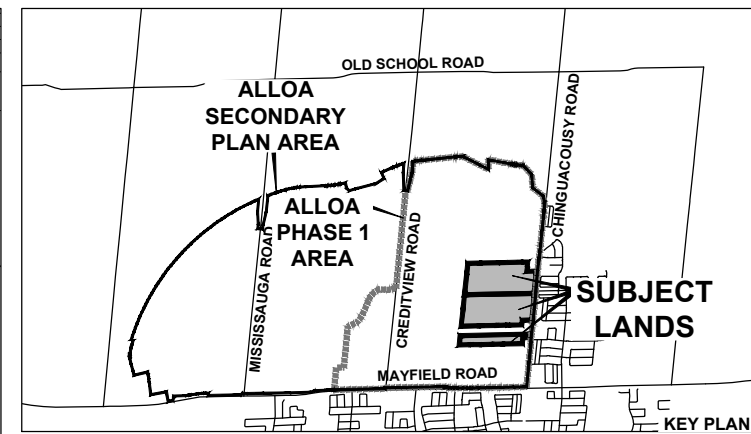
LAND USE SCHEDULE

LAND USE	LOTS / BLOCKS	AREA (ha)	AREA (ac)	UNITS	DENSITY (UPHA)
DETACHED - 12.80m (42')		6.87	16.98	268	39.01
DETACHED - 13.72m (45')	1-444	1.88	4.65	65	34.57
DETACHED - 15.24m (50')		3.30	8.15	111	33.64
STREET TOWNHOUSE - 7.30m (24')	445-465	1.61	3.98	96	59.63
REAR LANE TOWNHOUSE - 6.05m (20')	466-523	3.87	9.56	297	76.74
BACK-TO-BACK TOWNHOUSE - 5.60m (18')	524,525	0.16	0.40	18	112.50
MEDIUM - HIGH DENSITY RESIDENTIAL	526,527	3.71	9.17		
PUBLIC ELEMENTARY SCHOOL	528	1.36	3.36		
NEIGHBOURHOOD PARK	529	2.22	5.49		
WALKWAY BLOCK	530,531	0.02	0.05		
OPEN SPACE	532,533	0.02	0.05		
SWM POND	534	0.41	1.01		
ENVIRONMENTAL POLICY AREA	535,536	4.54	11.22		
RESIDENTIAL RESERVE	537-558	0.61	1.51		
ROAD WIDENING	559,560	0.38	0.94		
0.3m RESERVE	561-577	0.02	0.05		
8.0m LANEWAY R.O.W. (LENGTH: 1,236m)		1.03	2.55		
16.0m-18.0m LOCAL R.O.W. (LENGTH: 5,176m)		9.43	23.30		
22.0m COLLECTOR R.O.W. (LENGTH: 1,265m)		2.57	6.35		
29.0m COLLECTOR R.O.W. (LENGTH: 663m)		1.94	4.79		
TOTAL	577	45.95	113.54	855	48.20

- NOTES**
- STREET 'A' & CHINGUACOUSY ROAD DAYLIGHT TRIANGLE - 15.0m x 15.0m
 - COLLECTOR TO COLLECTOR DAYLIGHT TRIANGLE - 10.0m x 10.0m
 - LOCAL TO COLLECTOR DAYLIGHT TRIANGLE - 7.5m x 7.5m
 - LANEWAY TO LOCAL / COLLECTOR DAYLIGHT TRIANGLE - 3.0m x 3.0m
 - LOCAL TO LOCAL DAYLIGHT RADII - 5.0m
 - PAVEMENT ILLUSTRATION IS DIAGRAMMATIC
 - ALL INTERSECTION ANGLES ARE 90° UNLESS OTHERWISE NOTED

Attachment 3:

Parking Plan



PARKING PLAN
ARGO MAYFIELD WEST I LIMITED,
ARGO MAYFIELD WEST II LIMITED &
ARGO MAYFIELD WEST III LIMITED
 FILE # 21T-___C

PART OF LOTS 18 & 19, CONCESSION 3,
 WEST OF HURONTARIO STREET
 (GEOGRAPHIC TOWNSHIP OF CHINGACOUSY)
 TOWN OF CALEDON
 REGIONAL MUNICIPALITY OF PEEL

LEGEND

- POTENTIAL ON-STREET PARKING (3.0 x 6.0m)
470 SPACES
- POTENTIAL SIDEWALK LOCATIONS
- CONCEPTUAL PAVEMENT / DRIVEWAYS

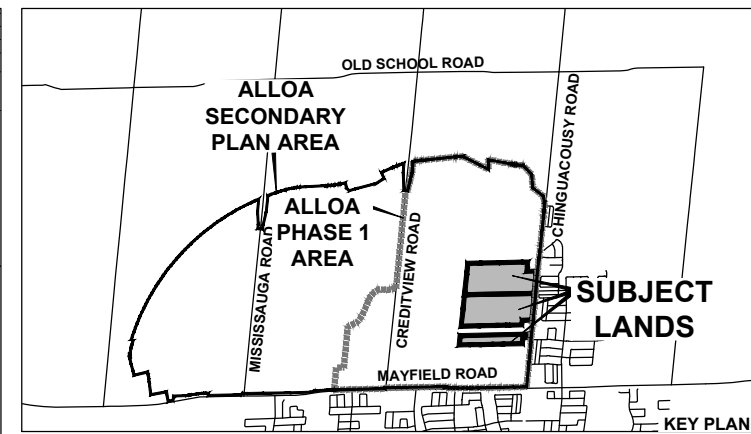
NOTE

- 9.0m MINIMUM SETBACK FROM INTERSECTIONS FOR ALL ON-STREET PARKING SPACES.
- 15.0m MINIMUM SETBACK FROM ELBOWS BENDS FOR ALL ON-STREET PARKING SPACES



Attachment 4:

Circulation Plan

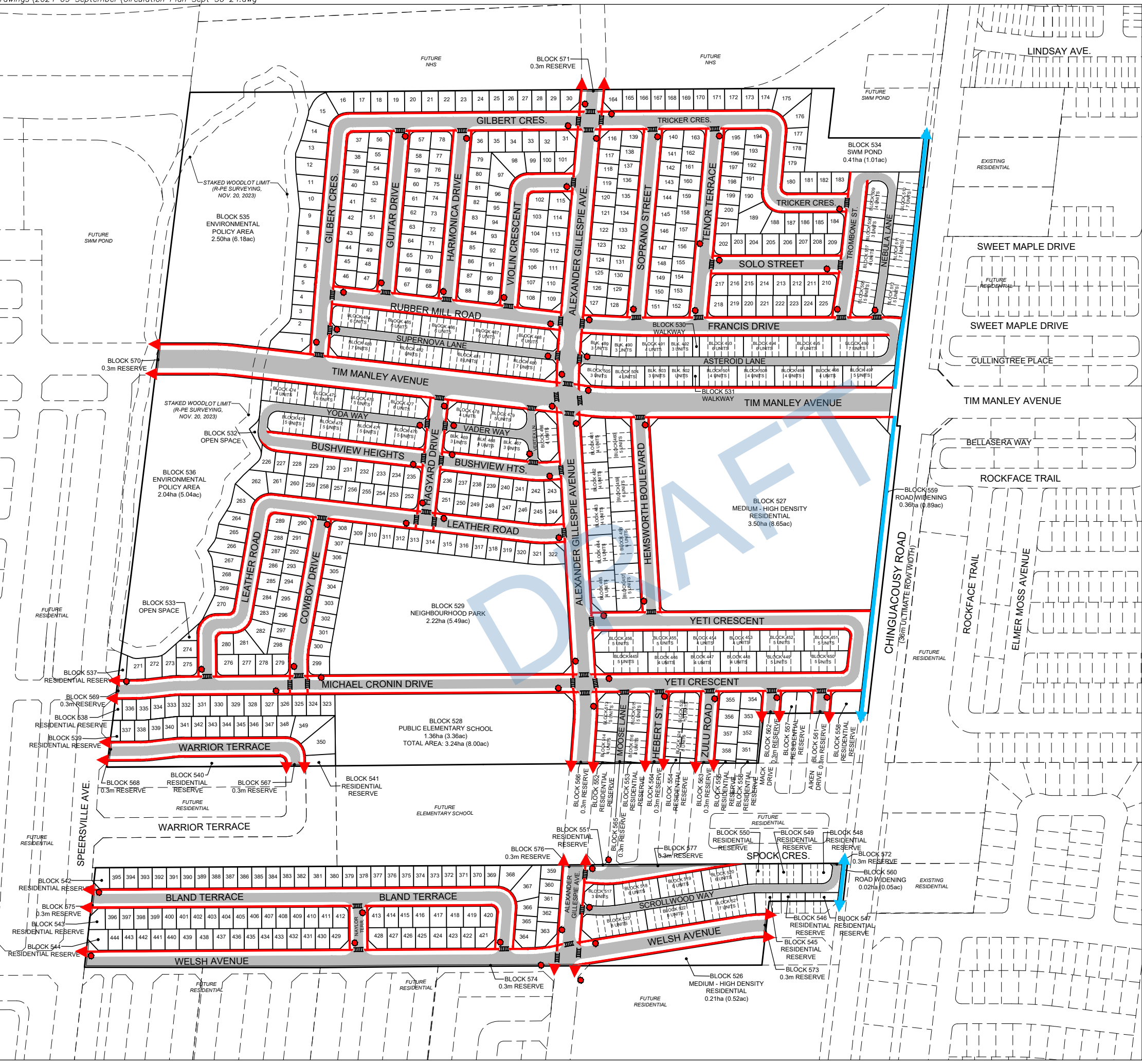


PEDESTRIAN CIRCULATION PLAN
ARGO MAYFIELD WEST I LIMITED,
ARGO MAYFIELD WEST II LIMITED &
ARGO MAYFIELD WEST III LIMITED
FILE # 21T-___C

PART OF LOTS 18 & 19, CONCESSION 3,
 WEST OF HURONTARIO STREET
 (GEOGRAPHIC TOWNSHIP OF CHINGUACOUSY)
 TOWN OF CALEDON
 REGIONAL MUNICIPALITY OF PEEL

LEGEND

- POTENTIAL 1.8m SIDEWALK LOCATIONS (TO BE CONFIRMED AT DETAILED DESIGN)
- 3.5m MULTI-USE PATH TO BE CONSTRUCTED AS A PART OF THE CHINGUACOUSY ROAD RECONSTRUCTION
- CONCEPTUAL PAVEMENT
- PROPOSED STOP SIGN LOCATION
- PROPOSED CROSSWALK LOCATION

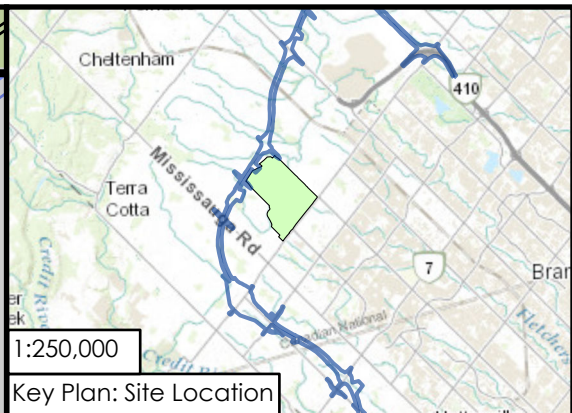
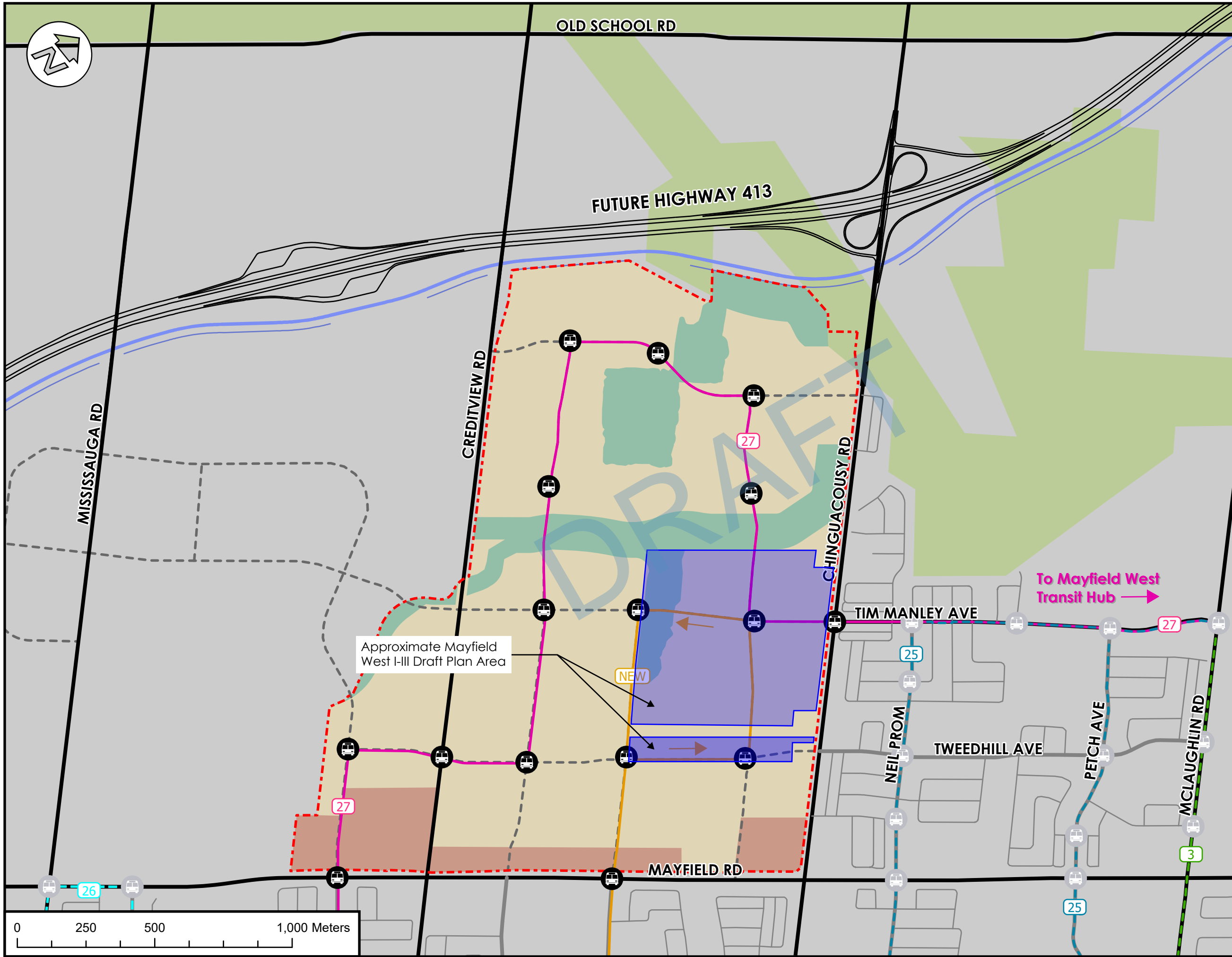


SCALE: 1:3,500
 (24 x 36)
 SEPTEMBER 30, 2024



Attachment 5:

Proposed Transit Network



Legend

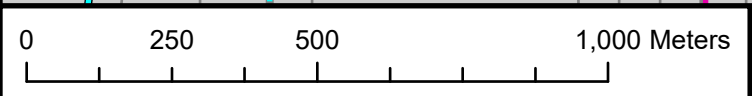
Alloa Phase 1 Tertiary Plan	Existing / Planned Brampton Transit Routes
Ontario Greenbelt	Existing Route 3
Road	Existing Route 25
Arterial	Existing Route 26
Collector	Proposed Transit Route
Local	Route 27 Extension
Proposed	NEW Brisdale Dr Route
Preliminary Highway (Edge of Pavement)	Proposed Land Use Plan
Preliminary Transitway	Developed Area
Preliminary Transitway (Right-of-Way)	Commercial / Mixed Use Area
Proposed Transit Stop	Natural Heritage System
Existing / Planned Transit Stop	

Figure Notes:

1. Road Classifications per Town of Caledon Multi-Modal Transportation Master Plan and the City of Brampton OP Schedule B City Road Hierarchy
2. Transit Network as per Future Caledon Official Plan 2024
3. Highway 413 area and alignment as per 50% Preliminary Highway Design (Highway 413 Interactive Map, 2024)

Project: Alloa Phase 1 Tertiary Plan

Figure: Alloa Phase 1 Proposed Interim Transit Network



Drawn: D.M	Design: M.L.	Project No. 2448-7006
Date: 2024-10-04	GCS: NAD 1983	Scale: 1:13,000 Dwg. Fig.