

TURNER FLEISCHER

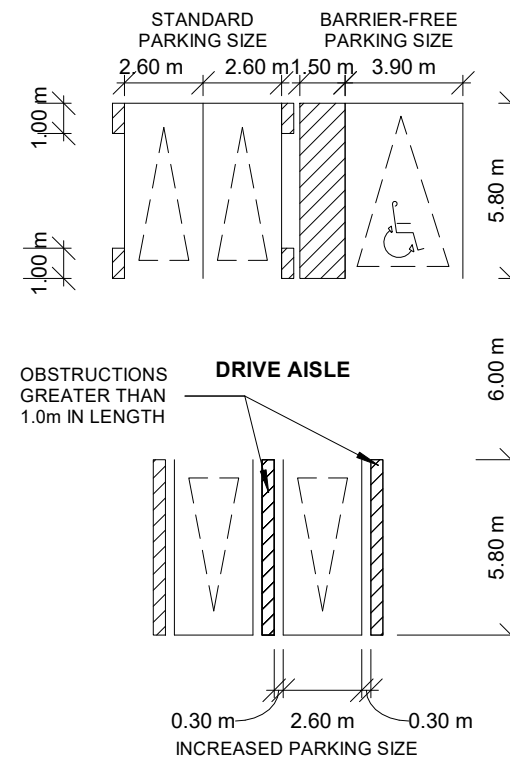
Turner Fleischer Architects Inc.
67 Lesmill Road
Toronto, ON, M5B 2T8
T 416 425 2222
turnerfleischer.com

The issue of this record drawing is a representation by Turner Fleischer Architects Inc. that the construction, arrangement or alteration of the plans shown, submitted to permit an approval by a public authority, with the design intended and intended by Turner Fleischer Architects Inc. It is not a representation of the construction of the building or the building and has not been prepared or approved by others. The design shown is not verified, and Turner Fleischer Architects Inc. and not be held responsible for the accuracy of the information provided by the owner. Turner Fleischer Architects Inc. and not be held responsible for the accuracy or completeness of the information provided by the owner.

MINIMUM PERMITTED DIMENSIONS AS TOWN OF CALEDON BY-LAW

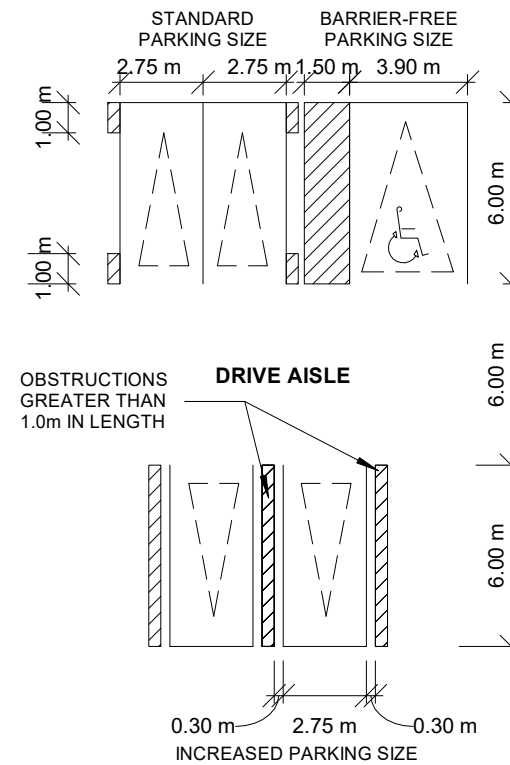
ENCLOSED PARKING

aisle width:
min 6.0 m
typical parking space:
min 2.6 x 5.8
typical barrier free spaces:
min 3.9 x 5.6 x 2.10 m high



SURFACE PARKING

aisle width:
min 6.0 m
typical parking space:
min 2.75 x 6.0
typical barrier free spaces:
min 3.9 x 5.6 x 2.10 m high



NOTE: ALL PARKING SPACES ARE TYPICAL (2.6 x 5.8) UNLESS OTHERWISE NOTED

1	2019-06-28	ISSUED FOR REZONING	RMM
#	DATE	DESCRIPTION	BY

PROJECT
84 NANCY STREET

BOLTON, ONTARIO

DRAWING
PARKING LEVEL 03

PROJECT NO.

18.164RZ

PROJECT DATE

2019-06-26

DRAWN BY

ASA

CHECKED BY

RMM

SCALE

1 : 250

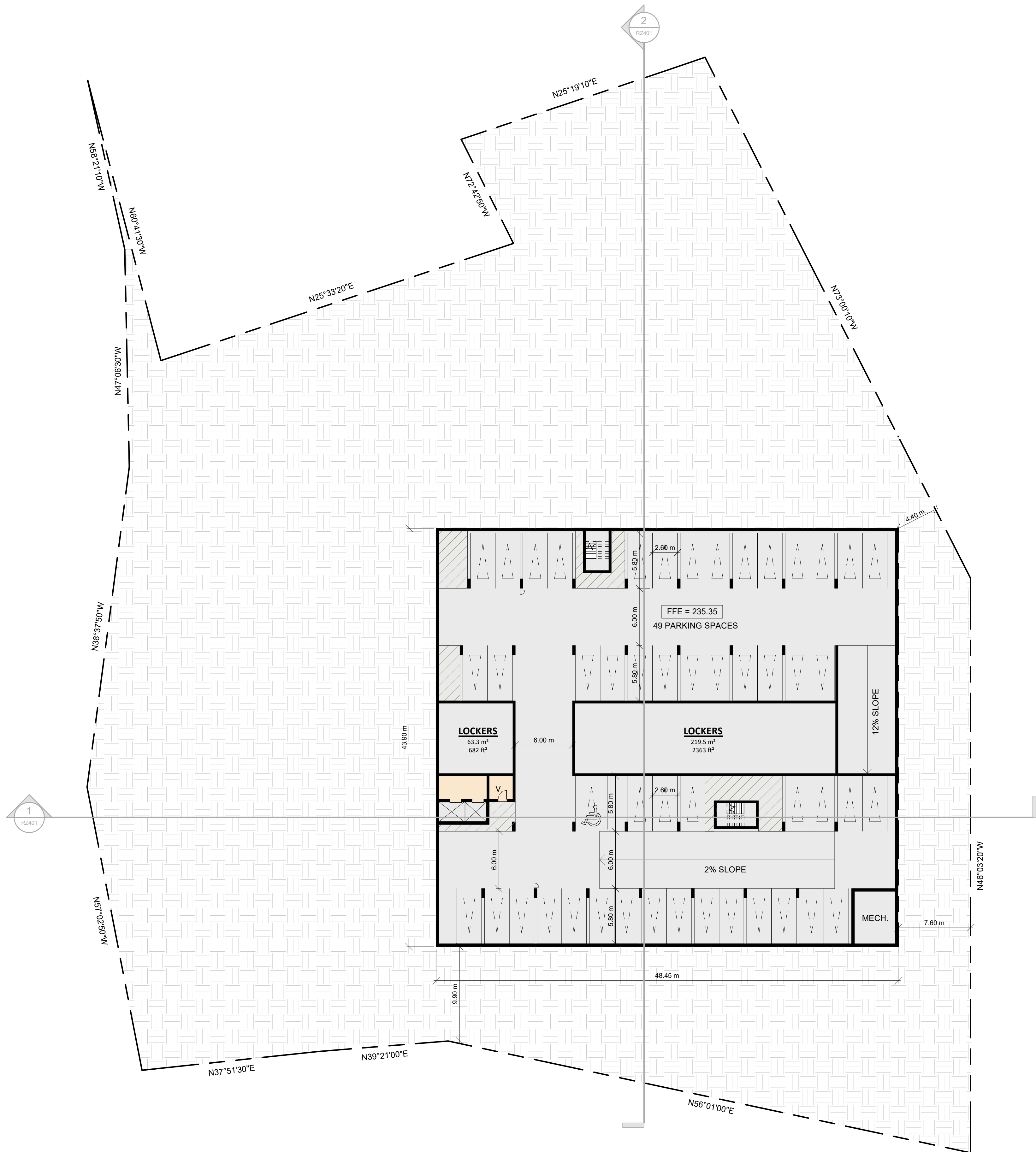
DRAWING NO.

RZ101



DRAWING NO.

RZ101





TURNER
FLEISCHER

Turner Fleischer Architects Inc.
67 Lesmill Road
Toronto, ON M5B 2T8
T 416 425 2222
turnerfleischer.com

The issue of this second drawing is a representation by Turner Fleischer Architects Inc. that the construction, siting, and placement of the proposed development is in accordance with the provisions of the Planning Act and the provisions of the Zoning By-law of the City of Toronto. The drawings are not intended to be used for any other purpose, and the drawings are not intended to be used for any other purpose, and the drawings are not intended to be used for any other purpose.

MINIMUM PERMITTED DIMENSIONS AS TOWN OF CALEDON
BY-LAW

ENCLOSED PARKING

AISLE WIDTH:
MIN 6.0 m

TYPICAL PARKING SPACE:
MIN 2.6 x 5.8

TYPICAL BARRIER FREE SPACES:
MIN 3.9 x 5.6 x 2.10 m HIGH

STANDARD PARKING SIZE
2.60 m

BARRIER-FREE PARKING SIZE
2.60 m, 1.50 m, 3.90 m

OBSTRUCTIONS
GREATER THAN
1.0m IN LENGTH

DRIVE AISLE

0.30 m 2.60 m 0.30 m
INCREASED PARKING SIZE

SURFACE PARKING

AISLE WIDTH:
MIN 6.0 m

TYPICAL PARKING SPACE:
MIN 2.75 x 6.0

TYPICAL BARRIER FREE SPACES:
MIN 3.9 x 5.6 x 2.10 m HIGH

STANDARD PARKING SIZE
2.75 m

BARRIER-FREE PARKING SIZE
2.75 m, 1.50 m, 3.90 m

OBSTRUCTIONS
GREATER THAN
1.0m IN LENGTH

DRIVE AISLE

0.30 m 2.75 m 0.30 m
INCREASED PARKING SIZE

NOTE: ALL PARKING SPACES ARE TYPICAL (2.6 x 5.8) UNLESS
OTHERWISE NOTED

1 2019-06-28 ISSUED FOR REZONING RMM

DATE DESCRIPTION BY

PROJECT

84 NANCY STREET

BOLTON, ONTARIO

DRAWING

SITE PLAN/PARKING LEVEL 2

PROJECT NO.
18.164RZ

PROJECT DATE
2019-06-26

DRAWN BY
ASA

CHECKED BY
RMM

SCALE
1 : 250

ONTARIO ASSOCIATION
OF ARCHITECTS

RUSSELL L. FLEISCHER
LICENCE
5004

DRAWING NO.
RZ102

2019-06-27 4:55:44 PM

Turner Fleischer Architects Inc.
67 Lesmill Road
Toronto, ON, M3B 2T8
T 416 425 2222
turnerfleischer.com

MINIMUM PERMITTED DIMENSIONS AS TOWN OF CALEDON BYLAW

ENCLOSED PARKING

AISLE WIDTH:
MIN 6.0 m

TYPICAL PARKING SPACE:
MIN 2.6 x 5.8

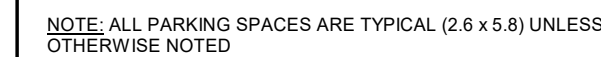
TYPICAL BARRIER FREE SPACE:
MIN 3.9 x 5.6 x 2.10 m HIGH



AISLE WIDTH:
MIN 6.0 m

TYPICAL PARKING SPACE:
MIN 2.75 x 6.0

TYPICAL BARRIER FREE SPACES:
MIN 3.9 x 5.6 x 2.10 m HIGH



1	2019-06-28	ISSUED FOR REZONING	RMM
#	DATE	DESCRIPTION	BY

BOLTON, ONTARIO

DRAWING

PARKING LEVEL 1

PROJECT NO. 18.164RZ
PROJECT DATE 2019-06-26
DRAWN BY ASA
CHECKED BY RMM
SCALE 1 : 250



DRAWING NO. RZ103

The issue of this second drawing is a representation by Turner Fleischer Architects Inc. that the construction, arrangement or alteration of the space shown, submitted to permit an approval to proceed, conforms with the design presented and approved by Turner Fleischer Architects Inc. It is not a representation that the information is in conformity with a design and has been prepared or provided by others. The project areas were not verified, and Turner Fleischer Architects Inc. and not be held responsible for the accuracy of the information provided by a third party. Turner Fleischer Architects Inc. reserves the right to make changes to the information provided by a third party. Turner Fleischer Architects Inc. shall not be held responsible for the accuracy or completeness of the information provided by the contractor.



1	2019-06-28	ISSUED FOR REZONING	RMM
#	DATE	DESCRIPTION	BY
PROJECT			
84 NANCY STREET			
BOLTON, ONTARIO			
DRAWING			
FLOOR 01			
PROJECT NO.	18.164RZ	<div>ONTARIO ASSOCIATION OF ARCHITECTS RUSSELL L. FLEISCHER LICENCE 5004</div>	
PROJECT DATE	2019-06-26		
DRAWN BY	ASA		
CHECKED BY	RMM		
SCALE	1 : 250		
DRAWING NO.		RZ151	



The issue of this second drawing is a representation by Turner Fleischer Architects Inc. that the construction, arrangement or alteration of the plans shown, submitted to permit an approval to proceed, conform with the design intended and approved by Turner Fleischer Architects Inc. It is not a representation that the information was reviewed with a view to and has been prepared or approved by others. The planee areas were not verified, and Turner Fleischer Architects Inc. and not be held responsible for the accuracy of the information provided by a third party. Under the provisions of the Act, the contractor, reflecting the significant changes in the work made during construction, are liable for the accuracy of the information provided by the contractor. Turner Fleischer Architects Inc. shall not be held responsible for the accuracy or completeness of the information provided by the contractor.

1	2019-06-28	ISSUED FOR REZONING	RMM
#	DATE	DESCRIPTION	BY

PROJECT
84 NANCY STREET

BOLTON, ONTARIO

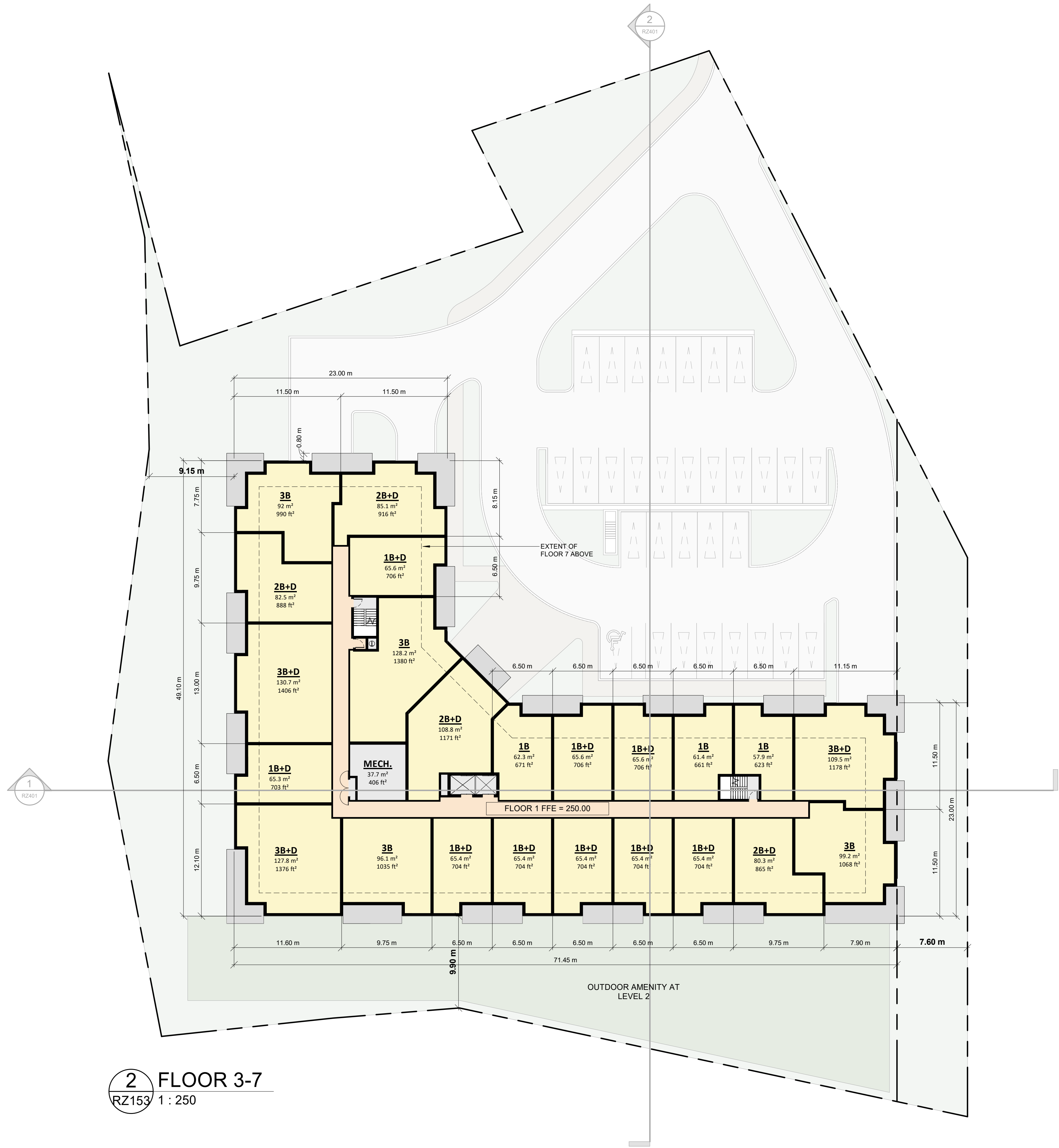
DRAWING

FLOOR 02

PROJECT NO. 18.164RZ	
PROJECT DATE 2019-06-26	
DRAWN BY ASA	
CHECKED BY Checker	
SCALE 1 : 250	

	DRAWING NO. RZ152
--	-----------------------------

The issue of this second drawing is a representation by Turner Fleischer Architects Inc. that the construction, arrangement or alteration of the space shown is intended to comply with the provisions of the Ontario Building Code and the City of Toronto Building Code. It is not a representation that the construction shown is in conformity with a building and has been prepared or approved by others. The project areas were not verified, and Turner Fleischer Architects Inc. and its staff are not responsible for the accuracy of the information provided by a third party. Turner Fleischer Architects Inc. disclaims all liability, including but not limited to, for any errors or omissions, and shall not be held responsible for the accuracy or completeness of the information provided by the contractor.



2 FLOOR 3-7
RZ153 1 : 250

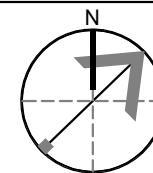
1	2019-06-28	ISSUED FOR REZONING	RMM
#	DATE	DESCRIPTION	BY

PROJECT
84 NANCY STREET
BOLTON, ONTARIO

DRAWING
FLOORS 03-07

PROJECT NO.
18.164RZ
PROJECT DATE
2019-06-26
DRAWN BY
ASA
CHECKED BY
RMM

SCALE
1 : 250



DRAWING NO.
RZ153

The issue of the recent drawing is a representation by Turner Fletcher Architects Inc. that the construction, enlargement or alteration of the areas shown is intended in general to provide conformity with the design prepared and provided by Turner Fletcher Architects Inc. It is not a representation that the unshaded areas is in conformity with a design that has been prepared or provided by others. The shaded areas were not verified, and Turner Fletcher Architects Inc. shall not be held responsible for the accuracy of the information provided by Loblaw Companies Limited. The revisions to these contract documents, reflecting the significant changes in the work made during construction, are based on data furnished by the contractor to Turner Fletcher Architects Inc. Turner Fletcher Architects Inc. shall not be held responsible for the accuracy or completeness of the information provided by the contractor.



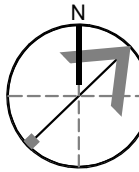
1	2019-06-28	ISSUED FOR REZONING	RMM
#	DATE	DESCRIPTION	BY

BOLTON, ONTARIO

DRAWING

FLOOR 08

PROJECT NO.	18.164RZ
PROJECT DATE	2019-06-26
DRAWN BY	ASA
CHECKED BY	RMM
SCALE	1 : 250



DRAWING NO. RZ154