

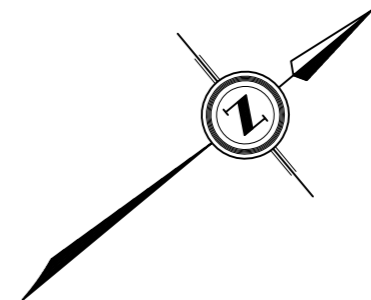
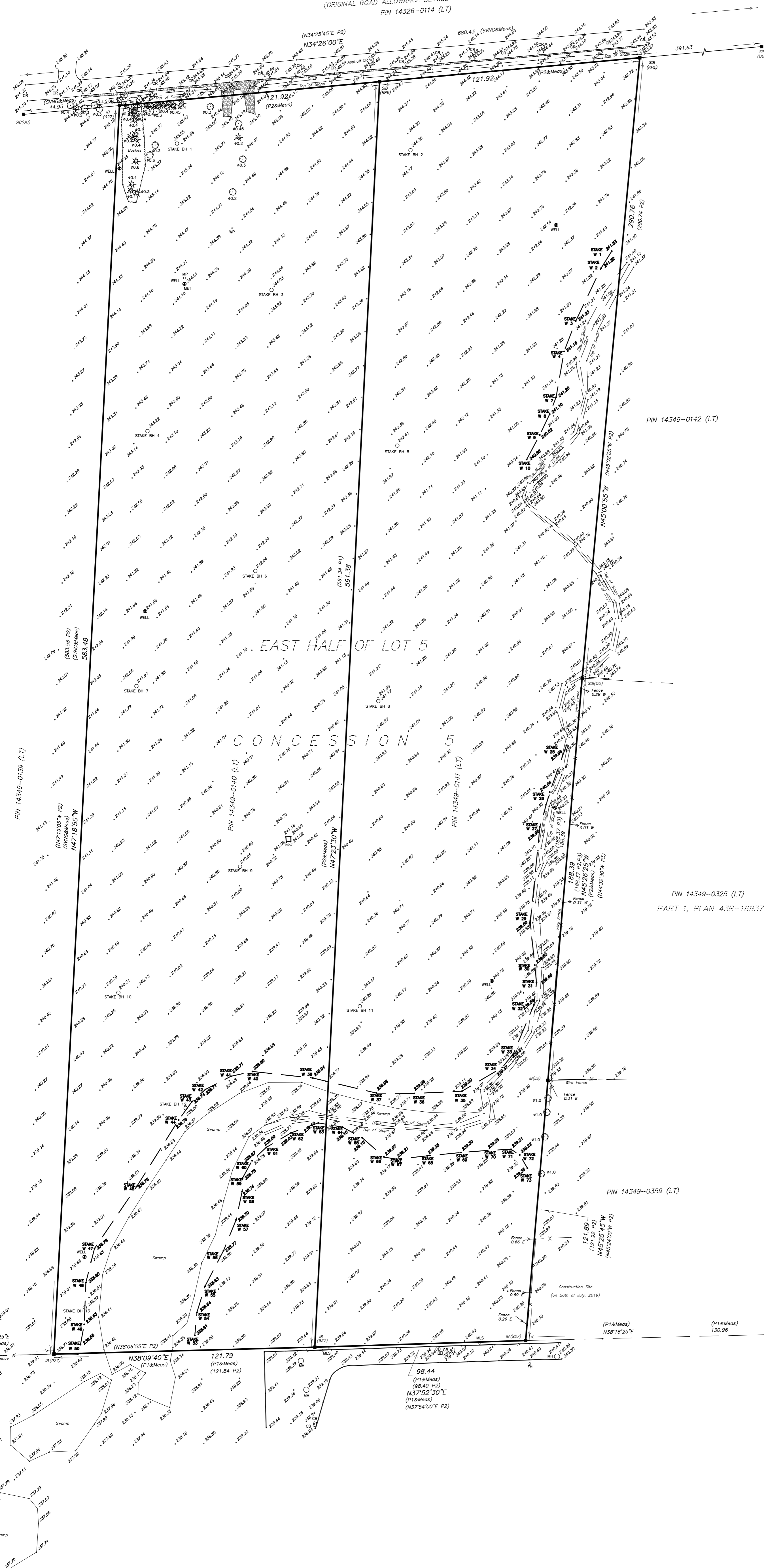
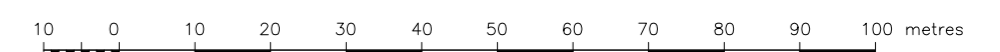
HEALEY ROAD

(ORIGINAL ROAD ALLOWANCE BETWEEN LOTS 5 AND 6)
PIN 14326-0114 (LT)

TOPOGRAPHIC SURVEY OF
PART OF LOT 5
CONCESSION 5
TOWN OF CALEDON
REGIONAL MUNICIPALITY OF PEEL
SCALE 1 : 1000

SPEIGHT, VAN NOSTRAND & GIBSON LIMITED
ONTARIO LAND SURVEYORS
2019

C THE REPRODUCTION, ALTERATION OR USE OF THIS PLAN, IN WHOLE OR IN PART, WITHOUT THE EXPRESS PERMISSION OF SPEIGHT, VAN NOSTRAND & GIBSON LIMITED IS STRICTLY PROHIBITED.



**TOWN OF CALEDON
PLANNING
RECEIVED**

July 31, 2020

ELEVATION NOTE

ELEVATIONS ARE BASED ON THE CANADIAN GEODETIC DATUM AND WERE DERIVED FROM THE TOWN OF CALEDON BENCHMARK No. 758056, HAVING A PUBLISHED ELEVATION OF 251.263 metres.

BEARING NOTE

BEARINGS HEREON ARE GRID BEARINGS AND ARE REFERRED TO THE NORTHEASTERLY LIMIT OF PART 1 AS SHOWN ON PLAN 43R-30545, HAVING A BEARING OF N45°52'40"W.

METRIC

DISTANCES SHOWN ON THIS PLAN ARE IN METRES AND CAN BE CONVERTED TO FEET BY DIVIDING BY 0.3048.

LEGEND

SYMBOL	DENOTES	SURVEY MONUMENT FOUND
■	WIT	SURVEY MONUMENT PLANTED
□	SSIB	WITNESS MONUMENT
○	IB	STANDARD IRON BAR
○	CC	SHORT STANDARD IRON BAR
○	N.S.E.W	IRON BAR
○	OU	CUT CROSS
○	SVNG	NORTH, SOUTH, EAST, WEST
○	P1	ORIGIN UNKNOWN
○	P2/RPE	SPEIGHT, VAN NOSTRAND & GIBSON LIMITED, O. L. S. - PLAN DATED SEPT. 13, 2019
○	P3	PLAN 43R-38737
○	927	RADY-PENITEK & EDWARD SURVEYING LIMITED, O.L.S. - DATED SEPT. 20, 2018
○	JS	PLAN 43R-16937
○		J. R. SNEATH, O.L.S.
○		J. STEL, O.L.S.
○	MH	MANHOLE
○	SMH	SEWER MANHOLE
○	WMH	WATER MANHOLE
○	HMH	HYDRO MANHOLE
○	BMH	BELL MANHOLE
○	CB	CATCH BASIN
○	FH	FIRE HYDRANT
○	WV	WATER VALVE
○	GV	GAS VALVE
○	HW	HAND WELL
○	CHP	CONCRETE HYDRO POLE
○	WHP	WOODEN HYDRO POLE
○	CLS	CONCRETE LIGHT STANDARD
○	MLS	METAL LIGHT STANDARD
○	G	GUTTER
○	OH	OVERHEAD WIRE
○	○	DECIDUOUS TREE
○	○	CONIFEROUS TREE

SURVEYOR'S CERTIFICATE

I CERTIFY THAT :
1. THIS SURVEY AND PLAN ARE CORRECT AND IN ACCORDANCE WITH THE SURVEYS ACT, THE SURVEYORS ACT AND THE REGULATIONS MADE UNDER THEM.
2. THE SURVEY WAS COMPLETED ON JULY 30, 2019.

DATE : AUGUST 10th, 2019

D. A. WILTON
D. A. WILTON
ONTARIO LAND SURVEYOR

SPEIGHT, VAN NOSTRAND & GIBSON LIMITED
ONTARIO LAND SURVEYORS
750 OAKDALE ROAD, Units 65 & 66
TORONTO, ONTARIO M3N 2Z4
TEL: 416 749-5VNG(7864) FAX 416 749-7866
E-MAIL: toronto@svng.on.ca

ASSOCIATION OF ONTARIO
LAND SURVEYORS
PLAN SUBMISSION FORM
2127618

DRAWN : F. P. B. FILE NAME : A1900208.DWG
CHECKED : D. A. W. PLOT SCALE : MET. 1=1.00
JOB No. : 190-0208 PLOTTED : July 31, 2019
REF. No. : UPDATED :

THIS PLAN IS NOT VALID UNLESS IT IS AN EMBOSSED ORIGINAL COPY ISSUED BY THE SURVEYOR
In accordance with Regulation 1026, Section 29(3)