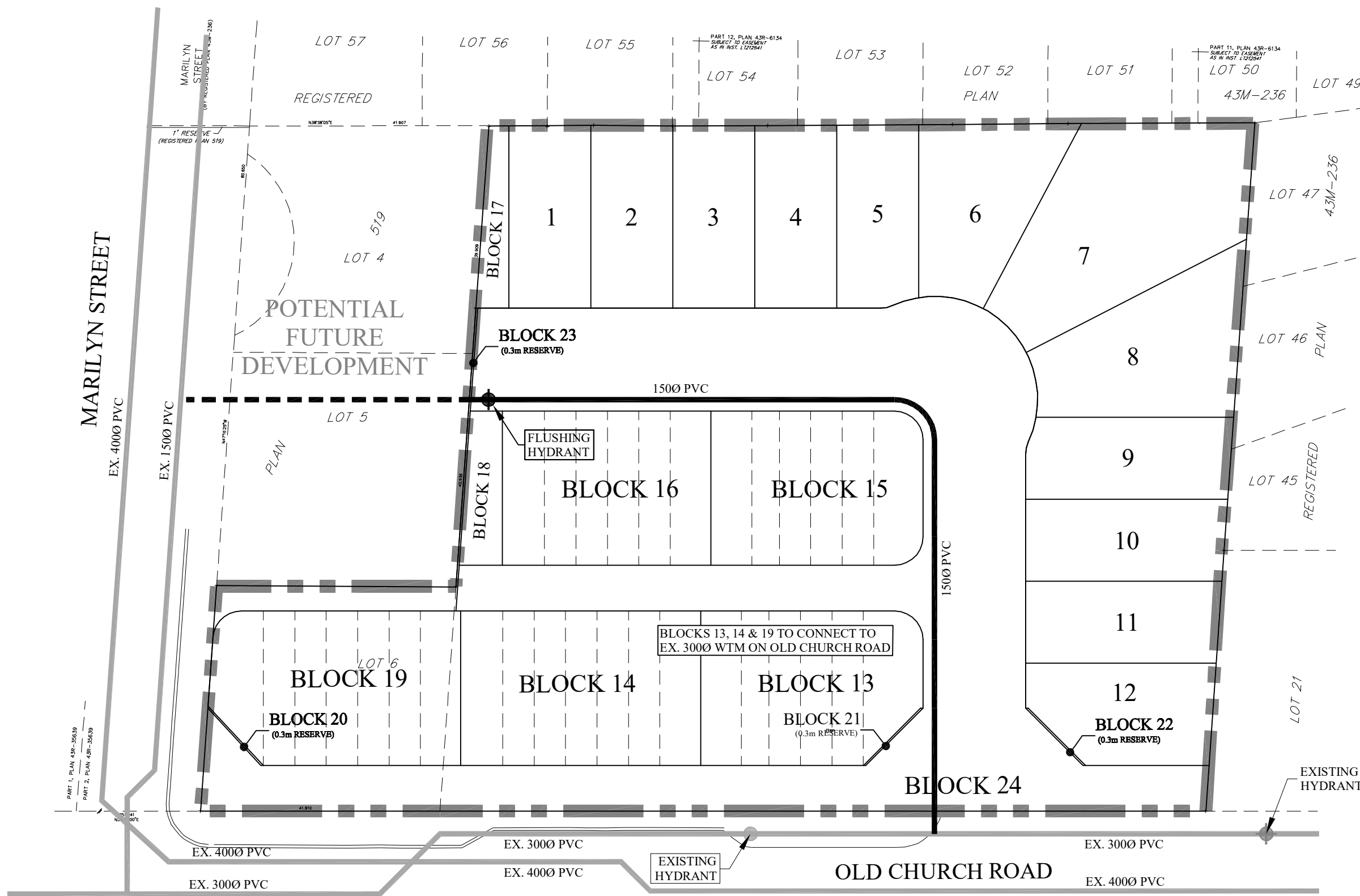
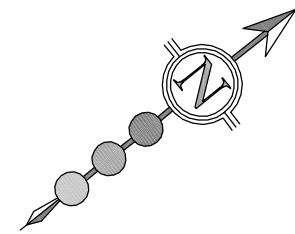


**LEGEND:**

○ 0.85ha ● PEOPLE PER HECTARE

\*NOTE: LAYOUT IS SCHEMATIC ONLY, DETAILS TO BE PROVIDED AT DETAILED DESIGN STAGE.

<p><b>STYLUX CALEDON INC.</b></p> <p>30 CENTURIAN DRIVE, SUITE 100 MARKHAM, ONTARIO L3R 8B8 TEL: (905) 475-1900 FAX: (905) 475-8335</p>	<p><b>LEGEND:</b></p> <p>--- SITE BOUNDARY</p> <p>--- DRAINAGE BOUNDARY</p> <p>--- EXISTING SANITARY SEWER</p> <p>→ PROPOSED SANITARY SEWER</p> <p>- - - POTENTIAL/FUTURE SANITARY SEWER</p> <p>○ 0.34 ● FUTURE DRAINAGE AREA (HECTARES)</p> <p>○ 50-175 ● PEOPLE PER HECTARE</p>	<p><b>STYLUX CALEDON EAST FSR</b></p>		<p><b>PROPOSED SANITARY DRAINAGE PLAN</b></p>	
		<p>DESIGNED BY: P.A.T</p> <p>SCALE: 1:750</p>	<p>CHECKED BY: D.W.</p> <p>DATE: APRIL 2020</p>	<p>PROJECT No:</p> <p><b>2185</b></p>	<p>FIGURE No:</p> <p><b>3.1</b></p>



\*NOTE: LAYOUT IS SCHEMATIC ONLY, DETAILS TO BE PROVIDED AT DETAILED DESIGN STAGE.

STYLUX CALEDON INC.



30 CENTURIAN DRIVE, SUITE 100  
 MARKHAM, ONTARIO L3R 8B8  
 TEL: (905) 475-1900  
 FAX: (905) 475-8335

LEGEND:

- SITE BOUNDARY
- PROPOSED WATERMAIN
- EXISTING WATERMAIN
- POTENTIAL/FUTURE WATERMAIN

STYLUX CALEDON EAST  
 FSR

DESIGNED BY: P.A.T  
 CHECKED BY: D.W.  
 SCALE: 1:750  
 DATE: APRIL 2020

PROPOSED WATER  
 DISTRIBUTION PLAN

PROJECT No: 2185  
 FIGURE No: 4.1