

LEGEND

- PLANT CODE
- PLANT QUANTITY
- DECIDUOUS TREE
- CONIFEROUS TREE
- PROPOSED SHRUB
- PROPOSED GROUND COVER
- SOD, SEE GENERAL NOTES #1, SHEET LD
- CONCRETE WALKWAY
- 19mm# STONE AT 150mm DEPTH OVER TERRAFIX 270R FILTER FABRIC
- LIMESTONE BOULDER, SEE GENERAL NOTES #3, SHEET LD
- DECORATIVE METAL FENCE SEE DETAIL ON LD
- TREE PROTECTION FENCE AS PER TREE PRESERVATION PLAN
- EXISTING VEGETATION TO REMAIN
- EXISTING VEGETATION TO BE REMOVED

**TOWN OF CALEDON
PLANNING
RECEIVED**

 June 21, 2022

MASTER PLANT LIST

CODE	BOTANICAL NAME	COMMON NAME	QTY	SIZE	COND.	SPACING
DECIDUOUS TREES						
AS	Acer x Fremanii Celebration	CELEBRATION MAPLE	2	70mm cal.	WB	7.0m O.C.
BP	Betula papyrifera	PAPER BIRCH	3	70mm cal.	WB	7.0m O.C.
GB	Ginkgo biloba 'Magyar'	MAGYAR MAIDENHAIR TREE	2	50mm cal.	WB	7.0m O.C.
CONIFEROUS TREES						
PP	Picea pungens	BABY BLUE SPRUCE	6	2500mm ht.	WB	4.0m O.C.
SHRUBS						
Cs	Cornus sericea	RED OSIER DOGWOOD	18	80cm ht.	2 gal.	1.5m O.C.
DI	Diervilla lonicera	BUSH HONEYSUCKLE	10	80cm ht.	2 gal.	0.8m O.C.
Hp	Hypericum prolificum	SHRUBBY ST. JOHN'S WORT	23	80cm ht.	2 gal.	0.8m O.C.
Jh	Juniperus horizontalis 'Limeglow'	LIMEGLOW CREEPING JUNIPER	5	80cm ht.	2 gal.	1.5m O.C.
Tm	Taxus x Media 'Densiflora'	DENSE YEW	40	80cm ht.	2 gal.	1.0m O.C.
PERENNIALS/GRASSES/GROUNDCOVERS						
pv	Panicum virgatum	SWITCH GRASS	46		1 gal.	.75m O.C.
hs*	Calamagrostis canadensis	EASTERN REDBUD	104		1 gal.	.80m O.C.
	Deschampsia cespitosa	TUFTED HARI GRASS	103		1 gal.	.55m O.C.
	Sorghastrum nutans	INDIAN GRASS	103		1 gal.	.45m O.C.

* PLACE IN GROUPINGS OF 3-5

THIS DRAWING HAS BEEN PREPARED BASED ON A BASE DRAWING PREPARED BY OTHERS. DILLON CONSULTING LIMITED CANNOT ASSURE THE ACCURACY OF OTHER'S INFORMATION AND IS NOT RESPONSIBLE FOR THE ACCURACY OF THE DOCUMENT OR FOR ANY ERROR OR OMISSION THAT MAY HAVE BEEN INCORPORATED INTO IT AS A RESULT. CONTRACTOR SHALL VERIFY THE ACCURACY PRIOR TO CONSTRUCTION.

TREE PROTECTION INFORMATION BASED ON TREE PRESERVATION PLAN AND ARBORIST REPORT PROVIDED BY 7 OAKS TREE CARE & URBAN FORESTRY CONSULTATIONS INC. DATED OCTOBER 2, 2019

SEE TREE PRESERVATION PLAN FOR INVENTORY AND RECOMMENDATIONS

Conditions of Use
 Verify elevations and/or dimensions on drawing prior to use. Report any discrepancies to Dillon Consulting Limited.
 Do not scale dimensions from drawing.
 Do not modify drawing, re-use it, or use it for purposes other than those intended at the time of its preparation without prior written permission from Dillon Consulting Limited.



THE TDL GROUP CORP.
 HEAD OFFICE
 226 WYECROFT ROAD
 OAKVILLE, ON
 L6K 3X7
 Ph (905) 339-6115
 Fax (905) 845-1536



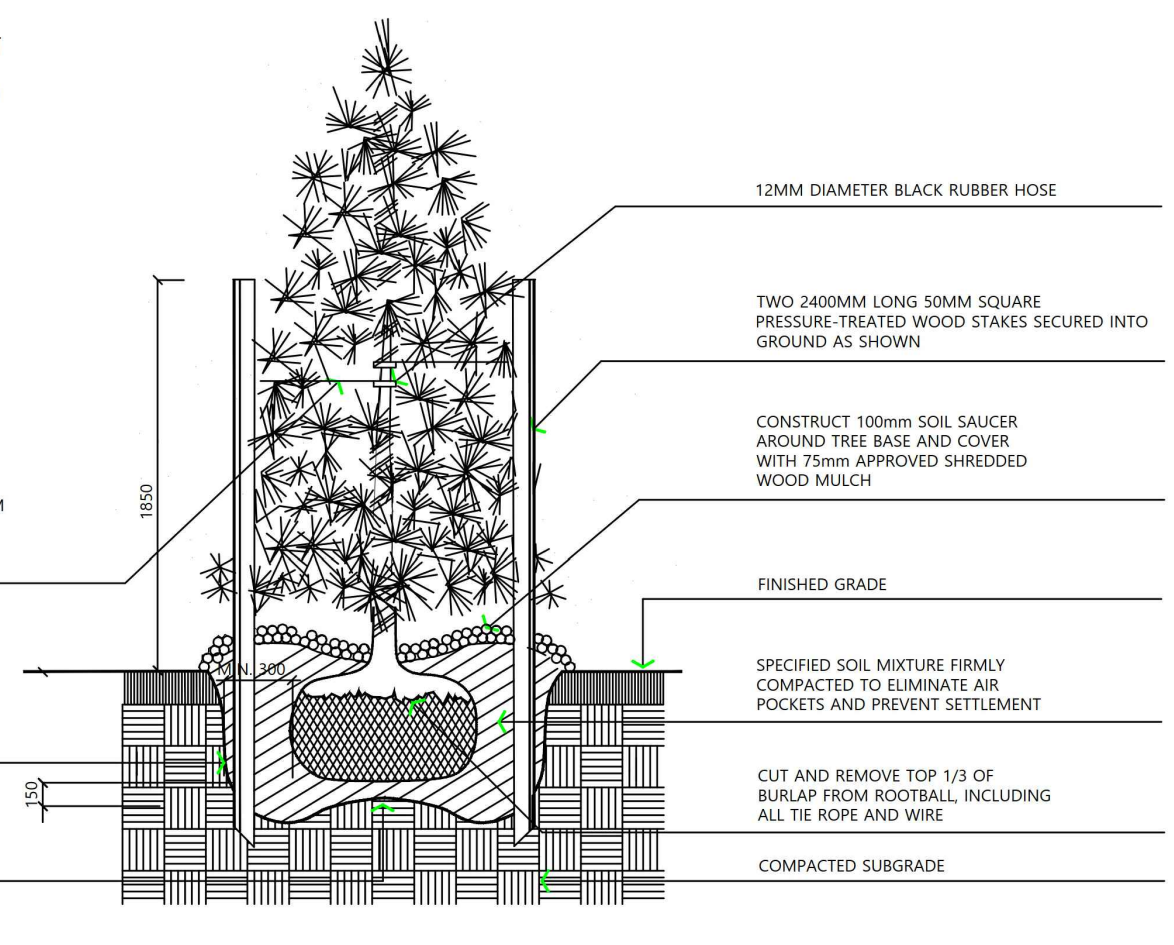
NO.	ISSUED FOR	DATE	BY
3	ISSUED FOR SP	22.05.06	JMM
2	TRANSFORMER ADDED	22.04.25	JMM
1	ISSUED FOR REVIEW	22.02.24	AB

DESIGN: JG, REVIEWED BY: JB
 DRAWN: AB, CHECKED BY: JG
 DATE: February 2022
 SCALE: 1:200

PROJECT NO: 16054, 16060 and 16068 Airport Road, Caledon ON Store #109409
 PROJECT NO: 22 3228
 SHEET NO: LP

Tim Hortons
Landscape Plan

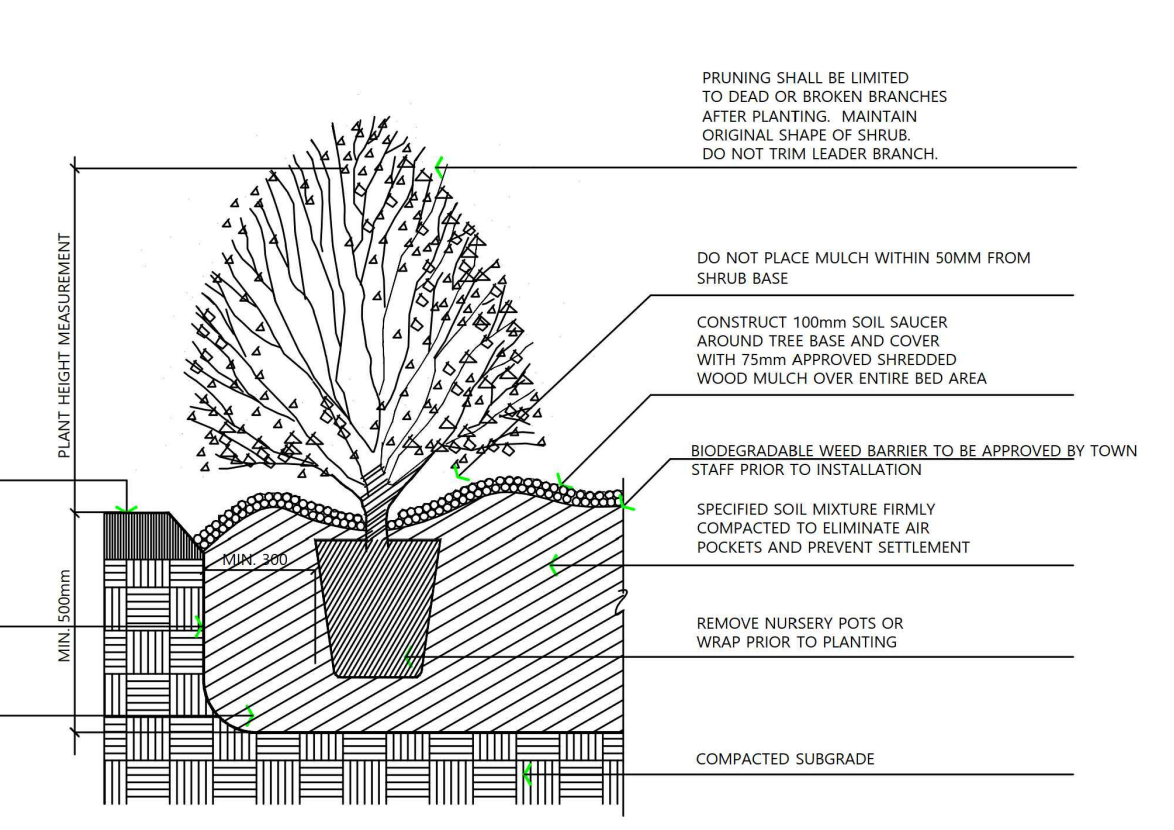
NOTES:
 1. TREE SHALL BE MEASURED TO HEIGHT OF LAST YEAR'S GROWTH.
 2. PRUNING SHALL BE LIMITED TO DEAD OR BROKEN BRANCHES AFTER PLANTING. MAINTAIN ORIGINAL SHAPE OF TREE. DO NOT TRIM LEADER BRANCH.
 3. SET TREE 75-100mm HIGHER THAN ADJACENT FINISHED GRADE TO ALLOW FOR SETTLEMENT.



TOWN OF CALEDON		APRD: C.C.	DATE: JUNE 08
2	STANDARD No. 701 NOW 801	APR 19	DRAWN: ABAL
1	STANDARD No. 1105 NOW 701	JUNE 08	SCALE: NTS
NO.	REVISION	APRD	DATE
STANDARD No. 801			

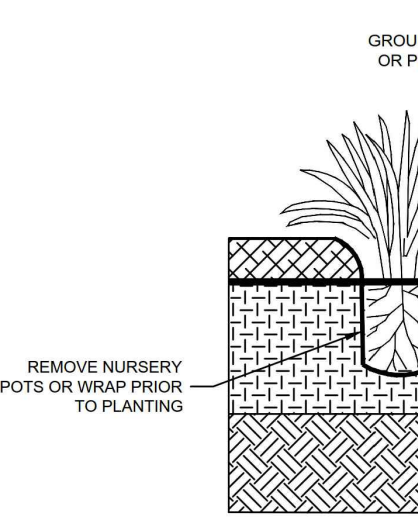
CONIFEROUS TREE PLANTING

NOTES:
 1. SHRUB HEIGHT SHALL BE MEASURED FROM FINISHED GRADE TO UPPER MAIN MASS OF SHRUB BRANCHES.
 2. SHRUBS PLANTED IN GROUPS SHALL BE SET IN CONTINUOUS BEDS AS SHOWN ON PLAN.
 3. SET SHRUBS 50mm HIGHER THAN ADJACENT FINISHED GRADE TO ALLOW FOR SETTLEMENT.
 4. PLANTING METHOD ILLUSTRATED APPLIES EQUALLY TO BARE ROOT, POTTED, OR B&B NURSERY STOCK.



TOWN OF CALEDON		APRD: C.C.	DATE: JUNE 08
3	STANDARD No. 702 NOW 802	APR 19	DRAWN: ABAL
2	STANDARD No. 1110 NOW 702	JUNE 08	SCALE: NTS
1	WEED BARRIER ADDED	MARCH 08	
NO.	REVISION	APRD	DATE
STANDARD No. 802			

SHRUB PLANTING



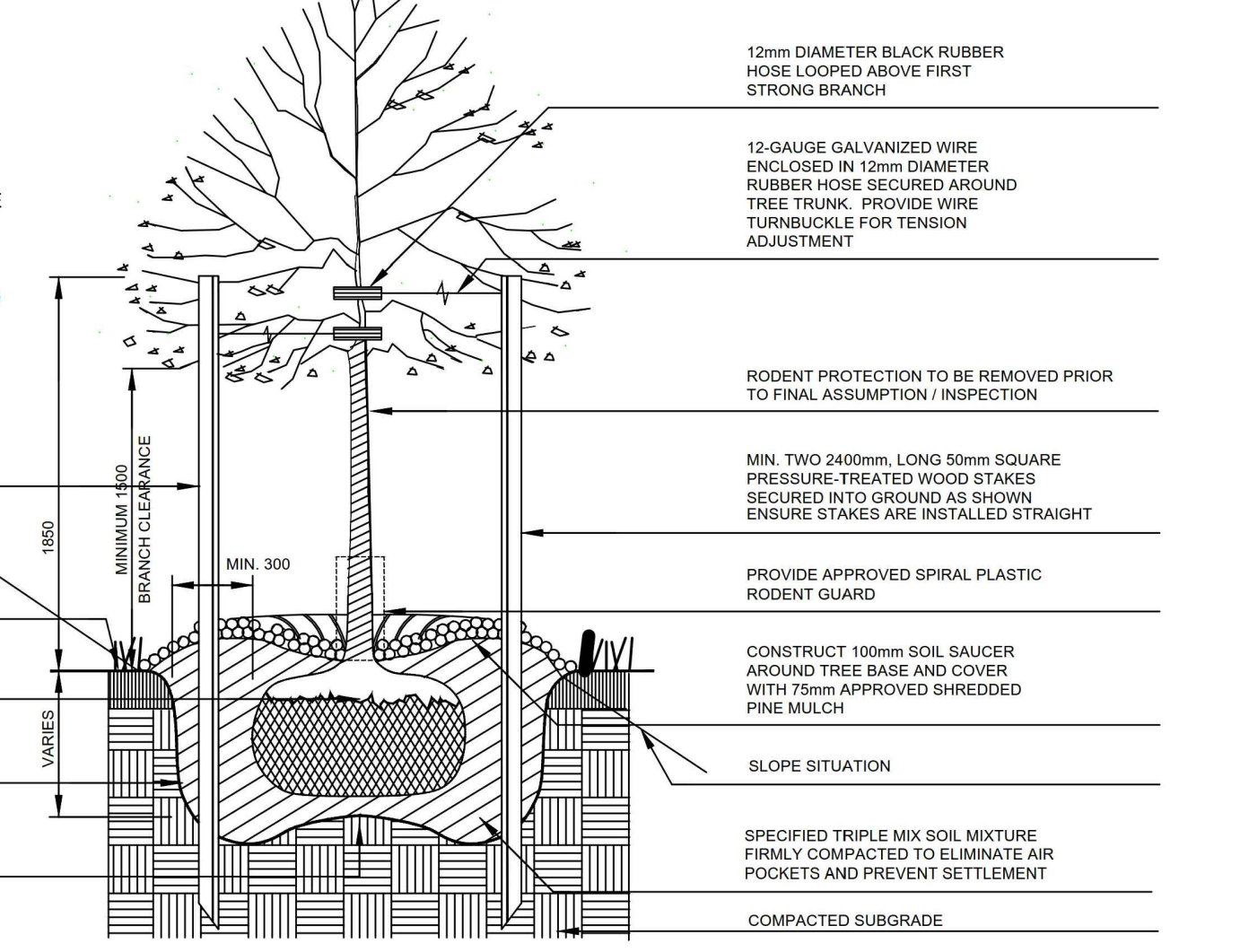
TOWN OF CALEDON		APRD: B.B.	DATE: AUGUST 17
2	STANDARD No. 702 NOW 802	APR 19	DRAWN: B.M.
1	WEED BARRIER ADDED	MARCH 08	SCALE: N.T.S.
NO.	REVISION	APRD	DATE
STANDARD No. 803			

GROUND COVER AND PERENNIAL PLANTING DETAIL

NOTE:
 1. PLANT IN DIAGONAL PLANTING PATTERN. REFER TO PLANT LIST FOR SPACING REQUIREMENTS.
 2. REFER TO PLANT LIST FOR GROUND COVER OR PERENNIAL TYPE.



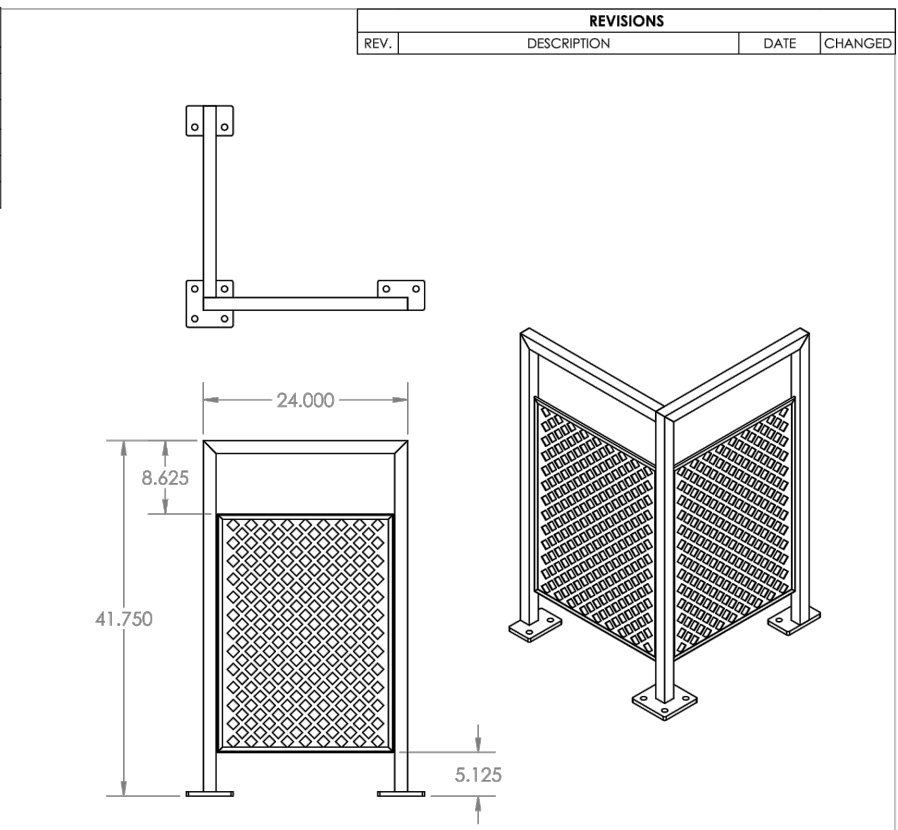
NOTES:
 1. WILT-PROOF IN NURSERY PRIOR TO DELIVERY.
 2. PRUNING SHALL BE LIMITED TO DEAD, DISEASED OR BROKEN BRANCHES AFTER PLANTING. MAINTAIN ORIGINAL SHAPE OF THE TREE. DO NOT TRIM LEADER BRANCH.
 3. SET TOP OF ROOT BALL 75-100mm HIGHER THAN ADJACENT FINISHED GRADE TO ALLOW FOR SETTLEMENT.



TOWN OF CALEDON		APRD: B.B.	DATE: JUNE 08
2	STANDARD No. 700 NOW 800	JAN 18	DRAWN: abal
1	STANDARD No. 1100 NOW 700	JUNE 08	SCALE: NTS
NO.	REVISION	APRD	DATE
STANDARD No. 800			

DECIDUOUS TREE PLANTING

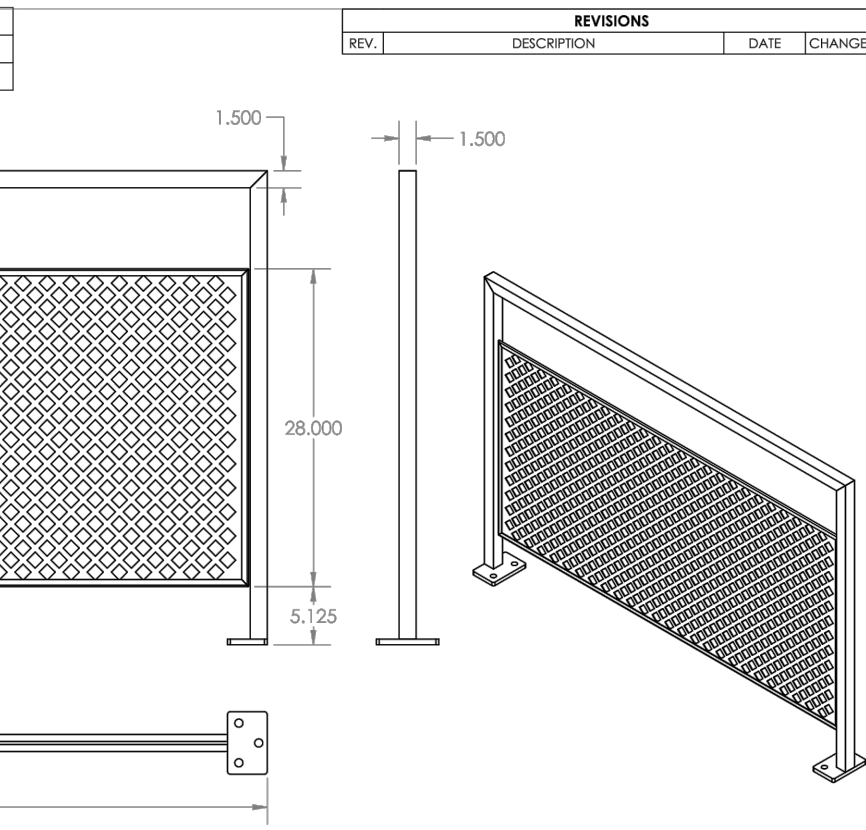
ITEM NO.	PART NUMBER	DESCRIPTION	QTY.
1	BUM-RS-03	Base Plate	1
2	BUM-RS-01	Post	2
3	BUM-RS-02-2	Top 2ft	1
4	BUM-RS-04	Base Plate	1
5	BUM-RS-C1	Frame 2 ft	1
6	BUM-RS-30-2	Panel Width 2	2



THE INFORMATION CONTAINED IN THIS PRINT IS THE SOLE PROPERTY OF ACCURATE METAL FABRICATING CO. IT IS NOT TO BE COPIED, REPRODUCED, OR DISTRIBUTED TO OTHERS WITHOUT THE WRITTEN PERMISSION OF ACCURATE METAL FABRICATING CO.		CUSTOMER: ANP
UNLESS OTHERWISE SPECIFIED: TOLERANCE ON THREE PLACE DECIMALS ARE ± .015	MATERIAL: GA CRS	APPROVALS: DATE DESCRIPTION
HOLES ARE + .002	WEIGHT: LBS	APPROVED: AR 11/23/2020
WELD JOINTS: UNDER 3/16" ± .002	FINISH: Btd	DATE: 11/23/2020
ANGLES ARE ± 1°	DO NOT SCALE DRAWING	SCALE: 1:16
		SHEET 1 OF 1

5 DECORATIVE METAL FENCE DETAIL N.T.S.

ITEM NO.	PART NUMBER	DESCRIPTION	QTY.
1	BUM-RS-20-5	Frame 5 ft	1
2	BUM-RS-30-5	Panel Width 5	1



THE INFORMATION CONTAINED IN THIS PRINT IS THE SOLE PROPERTY OF ACCURATE METAL FABRICATING CO. IT IS NOT TO BE COPIED, REPRODUCED, OR DISTRIBUTED TO OTHERS WITHOUT THE WRITTEN PERMISSION OF ACCURATE METAL FABRICATING CO.		CUSTOMER: ANP
UNLESS OTHERWISE SPECIFIED: TOLERANCE ON THREE PLACE DECIMALS ARE ± .015	MATERIAL: GA CRS	APPROVALS: DATE DESCRIPTION
HOLES ARE + .002	WEIGHT: LBS	APPROVED: AR 11/23/2020
WELD JOINTS: UNDER 3/16" ± .002	FINISH: TBO	DATE: 11/23/2020
ANGLES ARE ± 1°	DO NOT SCALE DRAWING	SCALE: 1:12
		SHEET 1 OF 1

LANDSCAPE NOTES

GENERAL:
 1. THESE SPECIFICATIONS ARE TO BE READ IN CONJUNCTION WITH THE GENERAL CONDITIONS OF THE CONTRACT.
 2. PRIOR TO COMMENCING WORK, THE CONTRACTOR SHALL:
 2.1. FAMILIARIZE THEMSELVES WITH THE PLANS, DETAILS AND SPECIFICATIONS OF THIS PROJECT;
 2.2. VISIT THE SITE TO ASCERTAIN AND TAKE ACCOUNT OF EXISTING CONDITIONS AND ANY DEVIATIONS FROM THE PLANS IN WORK BY OTHER; AND,
 2.3. FINALIZE ALL DESIGN ALTERNATIVES IN CONSULTATION WITH THE LANDSCAPE ARCHITECT.
 3. PRIOR TO EXCAVATING THE CONTRACTOR SHALL VERIFY THE LOCATION OF ALL UNDERGROUND UTILITIES. IN THE EVENT OF A CONFLICT BETWEEN A PROPOSED TREE LOCATION AND AN UNDERGROUND SERVICE, THE EXACT LOCATION OF THE TREE SHALL BE DETERMINED ON SITE BY THE LANDSCAPE ARCHITECT. THE CONTRACTOR SHALL, AT HIS/HER OWN EXPENSE, REPAIR ANY DAMAGE TO EXISTING UTILITIES, STRUCTURES, FACILITIES, ETC. DONE IN THE PERFORMANCE OF THEIR WORK.
 SOFT LANDSCAPING PLANT MATERIALS:
 4. ALL PLANTS SHALL BE INSTALLED TRUE TO SPECIFIED NAMES, SIZES, GRADES, ETC. AND SHALL CONFORM TO THE STANDARDS OF THE CANADIAN NURSERY LANDSCAPES ASSOCIATION.
 5. ALL PLANTS SHALL BE NURSERY GROWN IN A HARDINESS ZONE APPROPRIATE TO SITE CONDITIONS, AS PUBLISHED BY AGRICULTURE CANADA, ENTITLED 'MAP OF PLANT HARDINESS ZONES IN CANADA'.
 6. IN THE EVENT OF A DISCREPANCY IN PLANT QUANTITY BETWEEN THE LANDSCAPE PLAN AND THE PLANT LIST, THE LANDSCAPE ARCHITECT SHALL GOVERN.
 7. THE CONTRACTOR SHALL MAKE PLANTS AVAILABLE FOR INSPECTION BY THE LANDSCAPE ARCHITECT PRIOR TO SHIPPING TO THE SITE. THIS DOES NOT LIMIT THE RIGHT OF THE LANDSCAPE ARCHITECT AND/OR TOWN'S REPRESENTATIVE TO LATER REJECT PLANT MATERIAL THAT IS OF POOR QUALITY, DAMAGED DURING SHIPPING OR INSTALLATION, PERFORMING POORLY WHILE THE GUARANTEE PERIOD IS STILL IN EFFECT, OR OTHERWISE DOES NOT CONFORM TO THE SPECIFICATIONS.
 8. PLANT SUBSTITUTIONS MUST BE APPROVED IN WRITING BY THE OWNER, THE LANDSCAPE ARCHITECT AND THE TOWN PRIOR TO DELIVERY OF THE MATERIAL ON-SITE. THE LANDSCAPE ARCHITECT MAY, UPON COMPLETION OF THE WORK AND NOTWITHSTANDING PRIOR APPROVAL AT SOURCE, REJECT PLANT MATERIAL NOT CONFORMING TO THE SPECIFICATIONS.
 9. THE CONTRACTOR SHALL USE STANDARD INDUSTRY METHODS FOR PLANTING TREES. TREES SHALL BE TURNED TO GIVE THE BEST APPEARANCE. THEY SHALL ALSO BE GUYED AND STAKED IMMEDIATELY AFTER PLANTING AND AS DETAILED ON THE DRAWINGS.
 BED PREPARATION
 10. PRIOR TO BACKFILLING, SCARIFY THE SIDES AND BOTTOM OF THE EXCAVATED TREE PITS AND SHRUB BEDS.
 11. WHERE HEAVY CLAY SOIL CONDITIONS PREVAIL, BACKFILL TO THE SPECIFIED DEPTHS WITH:
 11.1. 2 PARTS 'TRIPLE MIX' DELIVERED TO THE SITE WELL-MIXED WITH 1 PART LOCAL TOPSOIL (TOPSOIL THAT WAS REMOVED FROM THE SITE AND STOCKPILED; IF UNAVAILABLE, A TOPSOIL WITH CLAY CONTENT MUST BE IMPORTED)
 12. TREE PITS MUST BE CONSTRUCTED WITH SAUCERS AND MULCH AS DETAILED.

MAINTENANCE

13. MAINTENANCE OF ALL LANDSCAPE INSTALLATIONS THROUGHOUT TO INCLUDE:
 14. PROPER IRRIGATION TO ENSURE OPTIMUM GROWTH AND DEVELOPMENT OF INSTALLED PLANT MATERIAL.
 15. CULTIVATION, WEEDING AND FERTILIZATION OF THE TREE PITS AND PLANTING BEDS.
 16. INSECT AND DISEASE CONTROL USING INTEGRATED PEST MANAGEMENT PRACTICES.
 17. PRUNING AND MAINTENANCE TO FURTHER PROMOTE VISIBILITY AND VITALITY OF ITS INTENDED USE, AS DIRECTED BY THE LANDSCAPE ARCHITECT OR THE TOWN.
 GUARANTEE
 18. ALL PLANT MATERIALS SHALL BE GUARANTEED FOR A MINIMUM OF 1 YEAR FROM DATE OF WRITTEN LANDSCAPE CERTIFICATION FOR COMMENCEMENT OF PLANT WARRANTY AS GRANTED BY THE TOWN, AND UNTIL FINAL CERTIFICATION IS GRANTED BY THE TOWN. PLANTS WHICH DO NOT SURVIVE SATISFACTORILY DURING THE GUARANTEE PERIOD SHALL BE REPLACED AT NO EXTRA COST TO THE OWNER. PLANT MATERIAL WHICH IS REPLACED DUE TO UNSATISFACTORY PERFORMANCE SHALL, IN TURN, BE GUARANTEED FOR ANOTHER MINIMUM OF 1 YEAR, OR UNTIL FINAL CERTIFICATION IS GRANTED BY THE TOWN.
 19. SIMILARLY, ALL OTHER LANDSCAPE WORK PERFORMED UNDER THIS CONTRACT SHALL BE FULLY GUARANTEED FOR THE ABOVE SPECIFIED PERIOD.
 20. ALL WORK SHALL BE INSPECTED AT THE END OF THE WARRANTY PERIOD, AT WHICH TIME A FINAL CERTIFICATE WILL BE ISSUED BY THE LANDSCAPE ARCHITECT AND SUBMITTED TO THE TOWN FOR THEIR INSPECTION, AND APPROVAL OF FINAL CERTIFICATION, PERMITTING RELEASE OF SITE WORK SECURITIES.
 21. AT THE END OF THE GUARANTEE PERIOD, THE CONTRACTOR SHALL REMOVE ALL TREE STAKES, RODENT GUARDS AND BARK WRAP AND ALL EXTRA MULCH WHERE NECESSARY.
 ACCEPTANCE
 22. WORK WILL BE ACCEPTED BY THE OWNER OR THEIR REPRESENTATIVE UPON COMPLETION AND AT THE END OF THE SPECIFIED MAINTENANCE PERIOD, PROVIDED THAT ALL PLANT MATERIAL IS ALIVE AND IN HEALTHY GROWING CONDITIONS.
 23. WRITTEN PRELIMINARY AND FINAL CERTIFICATION MUST BE SUBMITTED TO THE TOWN BY THE LANDSCAPE ARCHITECT. THE CERTIFICATIONS SHALL BE SIGNED AND STAMPED WITH THE SEAL OF THE OALA.
 24. PRELIMINARY CERTIFICATION OF THE PROJECT SHALL SERVE AS THE START OF THE GUARANTEE PERIOD.
 25. FINAL ACCEPTANCE OF THE LANDSCAPE WORKS FOR THIS PROJECT IS GRANTED BY THE TOWN OF CALEDON UPON CONDUCTING A SATISFACTORY FINAL SITE INSPECTION
 CONTINUED RESPONSIBILITY OF THE OWNER
 26. THE OWNER HAS A RESPONSIBILITY TO MAINTAIN THE APPROVED LANDSCAPE IN A WELL CARED FOR MANNER THAT PROMOTES PLANT VITALITY AND HEALTHY APPEARANCE. ANY DECLINING OR DEAD PLANTS ARE TO BE REPLACED WITHIN THE SEASON TO SUSTAIN A KEPT LANDSCAPE. THE OWNER IS REMINDED THAT FUTURE SITE PLAN APPLICATIONS FOR THIS SITE WILL BE REVIEWED WITH REGARD TO THE CONFORMITY OF THE EXISTING LANDSCAPING TO THE APPROVED LANDSCAPE PLAN REGISTERED WITH THE TOWN OF CALEDON.

GENERAL NOTES

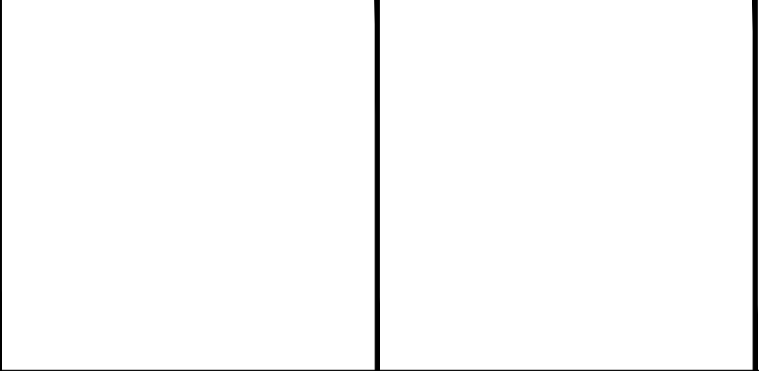
1. ALL AREAS TO BE SODDED SHALL HAVE A MINIMUM DEPTH OF 150mm OF TOPSOIL. SOD IS TO CONFORM TO THE CANADIAN NURSERY SOD GROWERS SPECIFICATIONS.
 2. CONTRACTORS AND SUBCONTRACTORS TO HAVE A MINIMUM OF 5 YEARS CANADIAN EXPERIENCE IN THE SUCCESSFUL EXECUTION OF WORK OF THIS TYPE.
 3. STONE TO BE LIMESTONE MIN 60CM HIGH X 60CM WIDE X 100CM LONG. PLACE STONE OVER 150mm GRANULAR 'A' GRAVEL, AND BURY A MINIMUM OF 75mm.

IRRIGATION NOTES:

4. CONTRACTOR TO DESIGN AND BUILD A FULLY AUTOMATIC UNDERGROUND IRRIGATION SYSTEM FOR ALL NEW LANDSCAPED AREAS. CONTRACTOR TO PROVIDE SHOP DRAWINGS TO LANDSCAPE ARCHITECT FOR APPROVAL. SHOP DRAWINGS TO BE STAMPED BY A CERTIFIED IRRIGATION DESIGNER.
 5. AUTOMATIC IRRIGATION SYSTEM TO BE WATER CONSERVING.
 6. IRRIGATION SYSTEM TO BE DESIGNED AND INSTALLED BY AN IRRIGATION CONTRACTOR WITH A MINIMUM OF FIVE YEARS EXPERIENCE.
 7. ALL WORK SHALL BE CARRIED OUT IN ACCORDANCE WITH BY-LAWS AND CODES HAVING JURISDICTION OVER SITE LOCATION.
 8. IT IS THE RESPONSIBILITY OF THE PLAN USER TO INFORM THEMSELVES OF THE EXACT LOCATION OF ALL POLES, LINES, CONDUIT, WATER MAINS, SEWERS AND OTHER UNDERGROUND AND OVERHEAD UTILITIES AND STRUCTURES BEFORE COMMENCING WORK.
 9. ACTUAL LOCATION OF SPRINKLERS TO BE DETERMINED AT TIME OF CONSTRUCTION.
 10. ALL SPRAY HEADS TO BE PRESSURE COMPENSATED
 11. ALL SPRINKLERS LOCATED IN THE SHRUB BEDS TO BE HI-POP SPRINKLERS
 12. IT IS THE RESPONSIBILITY OF THE PLAN USER TO INFORM THEMSELVES OF THE EXACT MATERIAL QUANTITIES REQUIRED
 13. ELECTRICAL CONTRACTOR IS TO PROVIDE 110 VOLT POWER SUPPLY TO THE IRRIGATION CONTROLLER AND 1" ELECTRICAL CONDUITS FROM THE CONTROLLERS TO THE WATER SUPPLY POINT OF CONNECTION OUTSIDE OF THE BUILDING.
 14. ALL VALVE BOXES TO BE SECURED WITH SECURITY LOCKING SCREWS.
 15. IRRIGATION TO PROVIDE FULL, EVEN COVERAGE OF PLANTED AREAS WITHOUT SPRAYING ONTO BUILDINGS, SIDEWALKS, FENCES, ETC.
 16. ARRANGE VALVE STATIONS TO OPERATE IN AN EASY-TO-VIEW PROGRESSIVE SEQUENCE AROUND BUILDING. RECORD SEQUENCE ON CONTROLLER LID.
 17. THE CONTROLLER SHALL BE OF A HYBRID TYPE THAT COMBINES ELECTRO-MECHANICAL AND MICROELECTRONIC CIRCUITRY CAPABLE OF FULLY AUTOMATIC OR MANUAL OPERATION.
 18. ALL POLYETHYLENE PIPE SHALL HAVE A MINIMUM 75-PSI PRESSURE RATING
 19. P.V.C. PIPE WILL BE CLASS 160 (SDR26) DIRECT BURIAL PIPE CONFORMING TO CS-256-63 AND WILL BE HOMOGENEOUS THROUGHOUT AND FREE FROM VISIBLE CRACKS, DENTS, HOLES OR FOREIGN MATERIALS.
 20. AFTER SYSTEM IS INSTALLED AND APPROVED, INSTRUCT OWNER'S DESIGNATED PERSONNEL IN COMPLETE OPERATION AND MAINTENANCE PROCEDURES.
 21. PROVIDE STANDARD ONE-YEAR GUARANTEE ON WORKMANSHIP AS WELL AS PRODUCT WARRANTY INCLUDING BLOW OUT TO PROTECT FROM FREEZE DAMAGE AND ADJUSTMENT TO SUPPLY PROPER COVERAGE OF AREAS TO RECEIVE WATER.

TDL STANDARD DETAILS HAVE BEEN DESIGNED BY OTHERS

Conditions of Use
 Verify elevations and/or dimensions on drawing prior to use. Report any discrepancies to Dillon Consulting Limited.
 Do not scale dimensions from drawing.
 Do not modify drawing, re-use it, or use it for purposes other than those intended at the time of its preparation without prior written permission from Dillon Consulting Limited.



THE TDL GROUP CORP.
 HEAD OFFICE
 226 WYECROFT ROAD
 OAKVILLE, ON
 L6K 3X7
 Ph (905) 339-6115
 Fax (905) 845-1536



DESIGN	JG	REVIEWED BY	JB
DRAWN	AB	CHECKED BY	JG
DATE	February 2022		
SCALE			
2	ISSUED FOR SP	22.05.06	JMM
1	ISSUED FOR REVIEW	20.02.24	AB
NO.	ISSUED FOR	DATE	BY

16054, 16060 and 16068 Airport Road, Caledon ON		PROJECT NO.	22 3228
Store #109409		SHEET NO.	LD