



**2 EAST ELEVATION**  
A5 SCALE: 1:50

**EXTERIOR ELEVATION NOTES**

- 1 PREFINISHED METAL FLASHING. REFER TO EXTERIOR FINISH SCHEDULE.
- 2 FACE BRICK - MODULAR SIZE. REFER TO EXTERIOR FINISH SCHEDULE.
- 3 G.C. TO SUPPLY AND INSTALL NEW EXTRUDED ALUMINUM SIDING WITH 12mm REVEALS C/W PRE-FINISHED ALUMINUM TRIM PIECES TO MATCH. REFER TO EXTERIOR FINISH SCHEDULE FOR PATTERN, SIZE & COLOUR. REFER TO EXTERIOR FINISH SCHEDULE AND ELECTRICAL DRAWINGS.
- 4 SOLDIER COURSE BRICK - MODULAR SIZE. REFER TO EXTERIOR FINISH SCHEDULE.
- 5 ANODIZED ALUMINUM FRAMES.
- 6 EXPOSED FOUNDATION TO BE PARGED & FREE OF IMPERFECTIONS.
- 7 POURED CONCRETE FOUNDATION. REFER TO STRUCTURAL DRAWINGS FOR SIZE & DEPTH.
- 8 1087mm (42") HIGH ILLUMINATED SIGN MOUNTED ON EXTERIOR WALL CLADDING. CONFIRM WITH PROJECT DESIGNER FOR SIZE AND SIGN PACKAGE. REFER TO ELECTRICAL DRAWINGS. G.C. TO ENSURE TO PROVIDE ADEQUATE WOOD BLOCKING/BACKING FOR SIGNAGE SUPPORT (COORDINATE WITH SIGN MANUFACTURER). G.C. TO COORDINATE WITH SIGN INSTALLER TO USE VHM DRILL BIT WHILE DRILLING FOR ELECTRICAL FEED LINES AND SIGNAGE FASTENERS (AT LOCATION OF PORCELAIN TILE) AND HOLES HAVE TO BE DRILLED LARGER THAN FASTENERS.
- 9 ROOF ACCESS LADDER.
- 10 METAL PIPE RAILING.
- 11 150mm DIA. METAL BOLLARD FILL W/ CONCRETE C/W BOLLARD COVER.
- 12 DRIVE-THRU WINDOW WITH INSULATED PANEL.
- 13 EXIT ONLY DECAL BY TDL GROUP CORP. SUPPLIED BY TDL AND INSTALLED BY G.C.
- 14 OVERFLOW SCUPPER.
- 15 CONCRETE SIDEWALK (BY OTHERS). REFER TO SITE PLAN.
- 16 EXTERIOR RECYCLING UNIT SUPPLIED BY TDL GROUP CORP. & INSTALLED BY G.C.
- 17 G.C. TO SUPPLY AND INSTALL NEW PORCELAIN TILE.
- 18 HWY CONCENTRIC VENT TO BE INSTALLED PRIOR TO SIDING.
- 19 LOCATION OF GAS METER.
- 20 ANODIZED ALUMINUM (EXTERIOR STOREFRONT SWING DOORS). G.C. TO INSTALL NEW 'HOCKEY STICK DOOR HANDLES' ON PULL SIDE (SUPPLIED BY TDL GROUP LTD).
- 21 LOCATION OF REMOTE SUCTION FOR GREASE INTERCEPTOR.
- 22 BARRIER FREE DOOR OPERATOR SWITCH LOCATION. REFER TO ELECTRICAL DRAWINGS. COORDINATE LOCATION OF AUTOMATIC DOOR OPERATORS WITH SITE PLAN AND TDL GROUP CORP.
- 23 CAMP BOX.
- 24 PROVIDE & INSTALL THREE (3) "NO-SMOKING WITHIN 7.5m" SIGNAGE AT ENTRIES/EXITS. CONFIRM SIZE, COLOUR & REQUIREMENTS AS PER SPECIFIC LOCAL CODES AND BYLAWS.
- 25 150mm METAL BOLLARD FILLED W/ CONCRETE. REFER TO EXTERIOR FINISH SCHEDULE.
- 26 G.C. TO PROVIDE & INSTALL STAINLESS STEEL KICK PLATE (AT BOTTOM PANELS) ON BOTH SIDES FOR MAIN ENTRANCE DOORS, VESTIBULE DOORS & EXIT DOORS.
- 27 PREFABRICATED CANOPY. G.C. TO SUPPLY AND INSTALL FROM APPROVED VENDOR 'STEELEART' G.C. TO COORDINATE INSTALLATION OF CANOPY (ELECTRICAL CONDUIT HOOKUP) PRIOR TO VAPOUR BARRIER INSTALLATION. PROVIDE EXTERIOR TYPE ACCESS PANEL ON INTERIOR OF BUILDING IF REQUIRED AS PER ON SITE REQUIREMENTS (TBD).
- 28 WALL SCENCE LIGHTING.
- 29 WALL PACK.
- 30 G.C. TO PROVIDE CONCRETE CURB ALONG DRIVE-THRU LANE. CURB TO PROJECT 200mm FROM FACE OF PORCELAIN TILE AND LENGTH OF CURB IS EXTENT OF FEATURE WALL.
- 31 EXTERIOR POP FRAME ITEM #201. SUPPLIED BY TDL GROUP AND INSTALLED BY G.C.
- 32 TPO ROOF MEMBRANE ON BACK OF PARAPET WALLS.
- 33 N/A.
- 34 N/A.
- 35 G.C. TO PROVIDE MIN. 13mm MOVEMENT JOINT (CRITICAL) FILLED WITH FLEXIBLE SEALANT AT EVERY 2400mm - 3600mm IN BOTH DIRECTIONS AS PER TTMAC DETAIL 301M). FLEXIBLE SEALANT COLOUR TO MATCH MORTAR JOINT 'CHARCOAL'.
- 36 G.C. TO PROVIDE CONTROL JOINT AS INDICATED COMPLETE WITH BACKING ROD & SEALANT (SEALANT COLOUR TO MATCH COLOUR OF MORTAR).
- 37 G.C. TO PROVIDE AND INSTALL NEW C-CHANNEL C/W INTEGRATED PERIMETER LIGHTING AT LOCATION OF SOLDIER COURSE (ENSURE NOT TO COVER ANY EXISTING VENTS, SCUPPERS, ETC.). G.C. TO PROVIDE POWER AND JUNCTION BOX FOR ELECTRICAL WIRING. REFER TO EXTERIOR FINISH SCHEDULE. G.C. TO COORDINATE DETAILS WITH MANUFACTURER & PROVIDE SUPPORT SYSTEM AS REQUIRED.

**EXTERIOR FINISH SCHEDULE**

PRODUCT	MANUF.	TYPE & COLOUR
PREFINISHED METAL FLASHING	FIRESTONE	FLASHING AT SIDING PARAPET - COLOUR: 'MATTE BLACK' FLASHING AT BRICK PARAPET - COLOUR: 'SLATE GRAY' FLASHING AT FOUNDATION. COLOUR: BLACK ANODIZED ALL FLASHING AT WINDOWS IS TO BE BLACK ANODIZED.
ANODIZED ALUMINUM (WINDOW FRAMES, DOOR FRAMES, VESTIBULE FRAMES & DOORS, EXIT ONLY DOOR)	ALUMICOR LIMITED	ALUMINUM FINISH (CLASS 1, 7 MILS MINIMUM) ALUMINUM BLACK ANODIZED BY ALUMICOR. CAULKING BETWEEN WINDOW FRAMES/DOOR FRAMES & EXTERIOR CLADDING COLOUR TO MATCH WINDOW FRAMES (TREMCO DYMONIC).
ANODIZED ALUMINUM (EXTERIOR STOREFRONT SWING DOORS ONLY)	ALUMICOR LIMITED	7700 THERMAPORTE THERMALLY BROKEN DOOR SYSTEM (600A WIDE STILE WITH NO MID RAIL) FINISH TO BE PANTONE 186C RED, HINGES AND DOOR PULL/PUSH TO BE BLACK.
ANODIZED ALUMINUM (DRIVE-THRU WINDOW)	NABCO OR HORTON AUTOMATICS	NABCO CONVENIENCE WINDOW GT1505 OR HORTON AUTOMATICS 8200TSX COLOUR: 'OHARE RED' (WINDOW) & BLACK ANODIZED (TOP & BOTTOM PANEL) - (CLASS 1, 7 MILS MINIMUM) ALUMINUM
PORCELAIN TILE	STONEPEAK	SERIES: ASTER. COLOUR: VENUS. SIZE: 600mm (W) x 1200mm (H) & 305mm (W) x 1220mm (H). PATTERN: VERTICAL RUNNING BOND. FINISH: HONED. GROUT: 10mm MAPEI UL TRACOLOR PLUS FA. GROUT COLOUR: 47 CHARCOAL. FLEXIBLE SEALANT (AT MOVEMENT JOINTS): 13mm MAPEI MAPESEIL T SILICONE SEALANT, FLEXIBLE SEALANT COLOUR: 93 WARM GRAY.
CUSTOM FINISHED EXTRUDED ALUMINUM SIDING	KNOTWOOD	SIZE: 6" NOMINAL. SPACING WITH 1/2" REVEAL JOINTS. COLOUR: 'BLACK ASH' (G.C. TO TOUCH UP IN FIELD). PATTERN: STAGGERED AT VERTICAL BUMP OUTS AND STAGGERED AT HORIZONTAL BUMP OUTS. NOTE: SIDING TO BE INSTALLED WITH KNOTWOOD ALUMINUM TRIM PIECES, STARTER CLIPS & JOINTS (COLOUR: MATCH 'BLACK ASH')
BRICK	ENDICOTT CLAY PRODUCTS	MODULAR FACE BRICK 94mm D x 94mm H x 194mm L. COLOUR: AUTUMN SANDS, VELOUR FINISH, RUNNING BOND. MORTAR: 677-MESQUITE
BRICK (ACCENT)	ENDICOTT CLAY PRODUCTS	MODULAR FACE BRICK 94mm D x 94mm H x 194mm L. COLOUR: AUTUMN SANDS, VELOUR FINISH, SOLDIER COURSE. MORTAR: 677-MESQUITE
PAINT - BOLLARDS	SHERWIN WILLIAMS	COLOUR: #SW 6903 'CHEERFUL'
BLACK TURNBUCKLE CANOPIES	STEEL ART SIGNS	BLACK TURNBUCKLE CANOPIES.
DECORATIVE METAL BAND	TBD	COLOUR TO MATCH 'BLACK ASH' ALUMINUM SIDING.
WALLPACK	REFER TO ELEC. DRAWINGS	VARIES - PAINTED TO MATCH ADJACENT FINISH.
C-CHANNEL PERIMETER INTEGRATED LIGHTING	REFER TO ELEC. DRAWINGS	TBD BY TIM HORTONS

NOTE:  
1. REFER TO SPECIFICATIONS ON SHEET SP4 FOR APPROVED SUPPLIERS LIST.

**ISSUE TABLE**

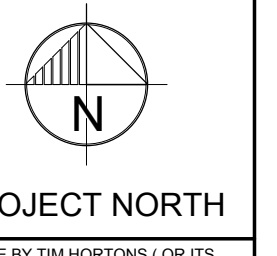
No.	Date (mm/dd/yy)	Description
01	07-09-19	ISSUED FOR SPA

**REVISIONS**

No.	Date	Description
-----	------	-------------

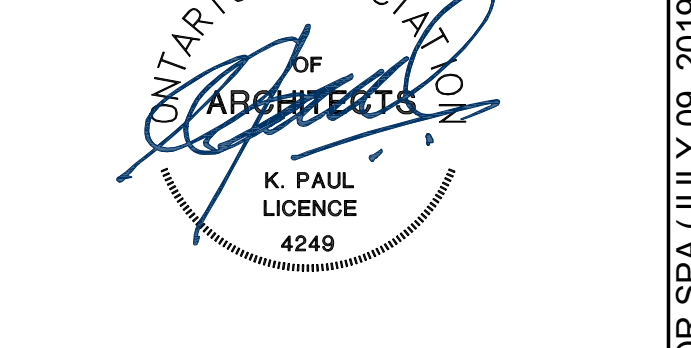
**DRAWINGS REVISED AS PER DESIGN BULLETIN**

No.	Date	Description
01	07-09-19	REVISED AS PER DB #8-19



THIS DRAWING IS OWNED BY OR LICENSED FOR USE BY TIM HORTONS (OR ITS AFFILIATED OR RELATED COMPANIES) AND MAY NOT BE REPRODUCED, USED, DOWNLOADED, DISSEMINATED, PUBLISHED, OR TRANSFERRED IN ANY FORM OR BY ANY MEANS, EXCEPT WITH THE PRIOR WRITTEN CONSENT OF TIM HORTONS. COPYRIGHT INFRINGEMENT IS A VIOLATION OF FEDERAL LAW SUBJECT TO CRIMINAL AND CIVIL PENALTIES.

THE CONTRACTOR IS TO VERIFY ALL DIMENSIONS AND CONDITIONS ON THE PROJECT AND TO REPORT ANY DISCREPANCIES TO THE TIM HORTONS REPRESENTATIVE PRIOR TO COMMENCING WORK. THESE DRAWINGS ARE NOT TO BE USED FOR CONSTRUCTION PURPOSES UNLESS INDICATED BY TIM HORTONS AS 'ISSUED FOR CONSTRUCTION'.



**K PAUL ARCHITECT INC.**  
TORONTO • VANCOUVER

2660 Sherwood Heights Dr. Suite 200, Oakville, Ontario, L6J 7Y8  
www.kpaularchitect.com  
(905)337-9800 fax (905)337-1986



Store Type  
**WELCOME MODEL 2500**

Location  
**15977 AIRPORT ROAD**  
CALEDON EAST, ONTARIO

Drawing Title  
**EXTERIOR ELEVATIONS**

Drawn	LM	Checked	DR
Scale	1:50	Date	JULY 2019
Project No.	1905151	Drawing No.	A5

TIM HORTONS WELCOME MODEL 2500, 15977 AIRPORT ROAD, CALEDON EAST, ONTARIO, ISSUED FOR SPA (JULY 09, 2019) TDL NO. XXXX