

Terra Cotta Trail Head

Caledon Trailway

Context

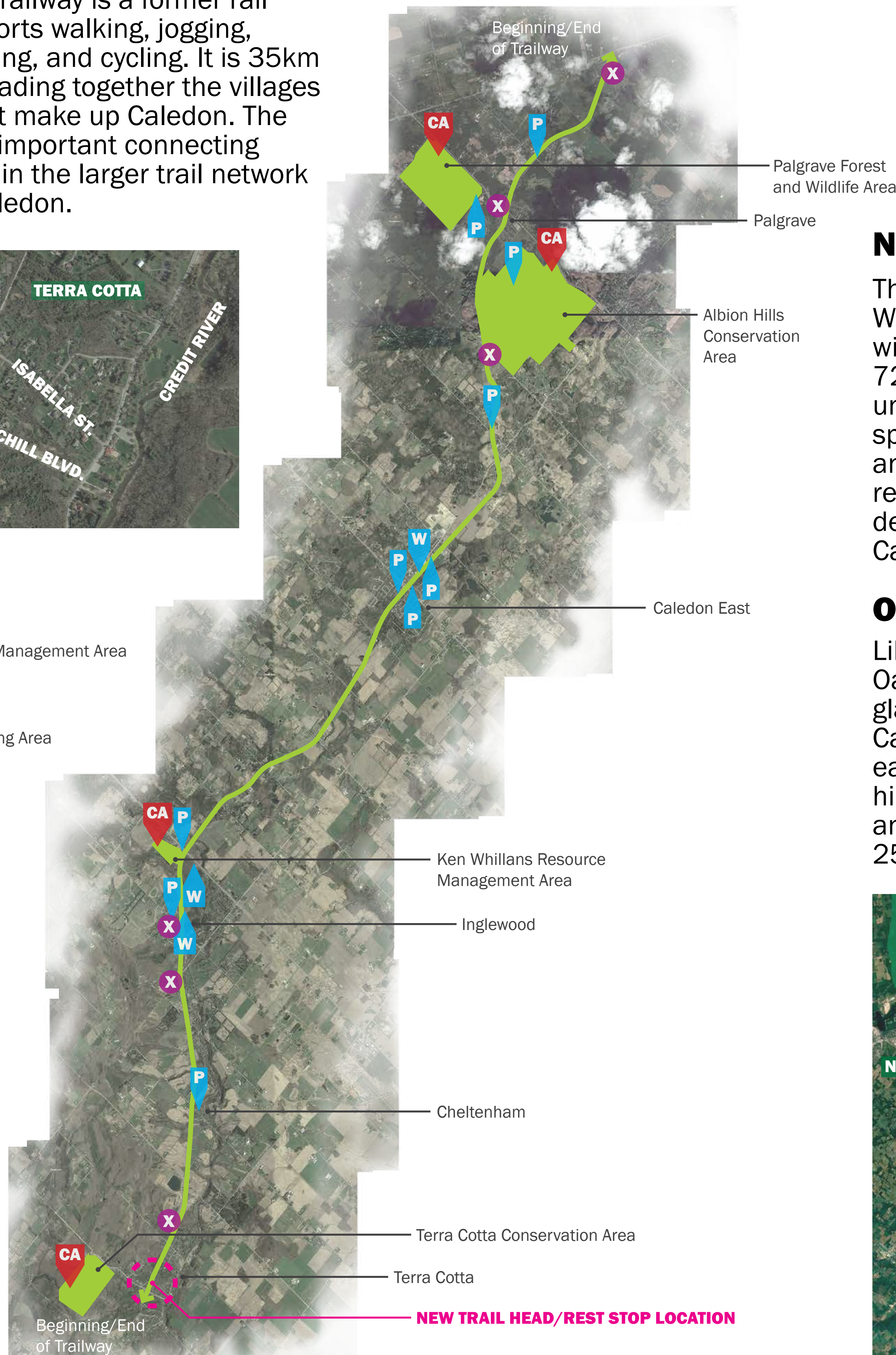
The Caledon Trailway is a former rail line that supports walking, jogging, horseback riding, and cycling. It is 35km in length, threading together the villages and parks that make up Caledon. The Trailway is an important connecting infrastructure in the larger trail network that spans Caledon.



0 100m N

- Conservation or Management Area
- Link to Other Trail
- Designated Parking Area
- Washroom

0 200m N

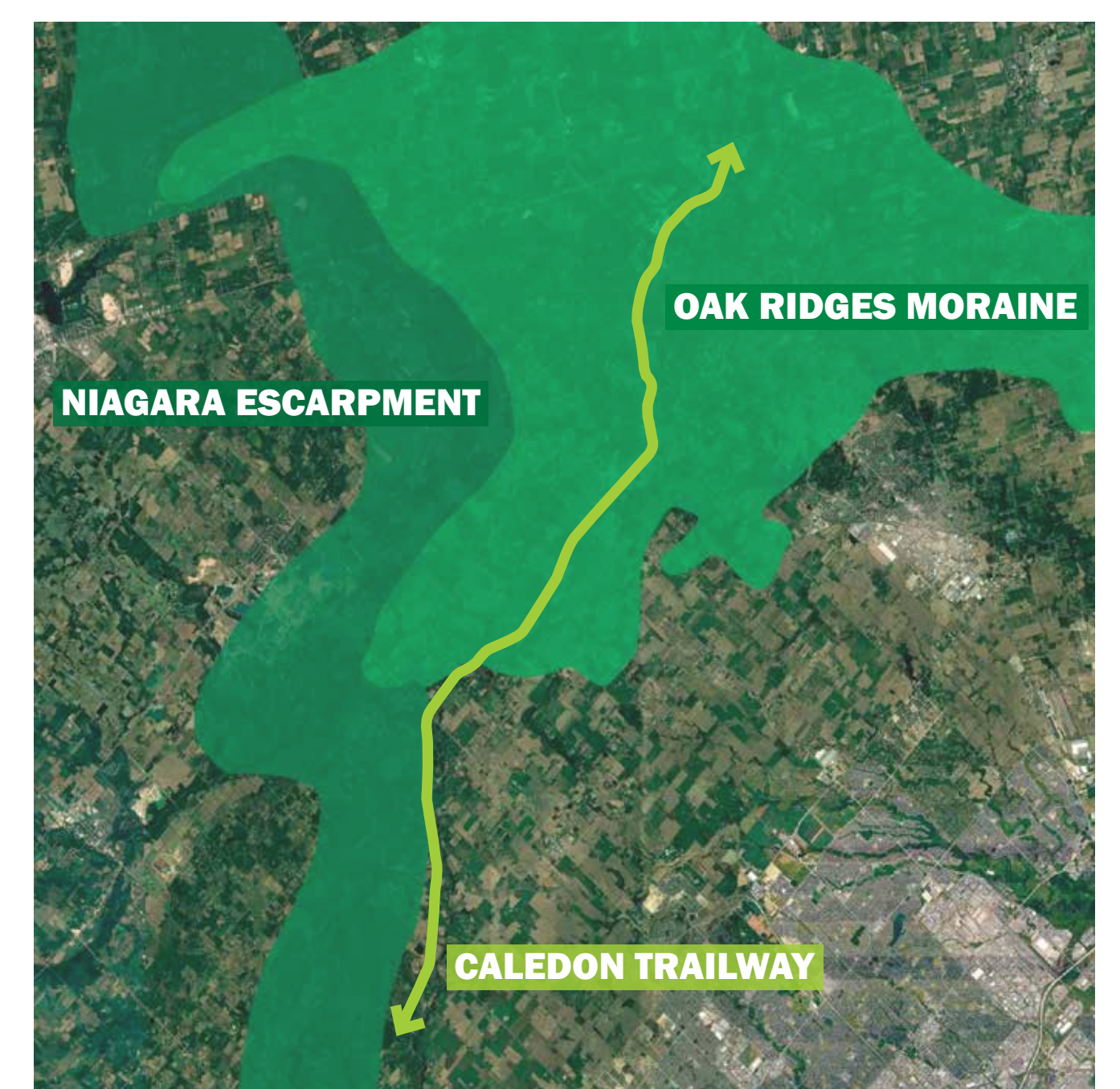


Niagara Escarpment

The Niagara Escarpment, a UNESCO World Biosphere Reserve, is a winding limestone strip stretching 725kms through Ontario. This unique geological feature provides specialized habitat for many plant and animal species as well as recreational opportunities. It is a defining feature in the character of Caledon.

Oak Ridges Moraine

Like the Niagara Escarpment the Oak Ridges Moraine is a defining glacial feature in the character of Caledon. At 160kms long (west to east), it consists of rolling plains, hills, lakes, and streams. It collects and stores drinking water for 250,000 people in Ontario.



Existing Access Points



Trellis and stone piles in Palgrave



Typical entry at rural road



Urban entry/crossing in Caledon East



Stone and shrubs in Cheltenham



Shade pavilion in Inglewood

Rail To Trail

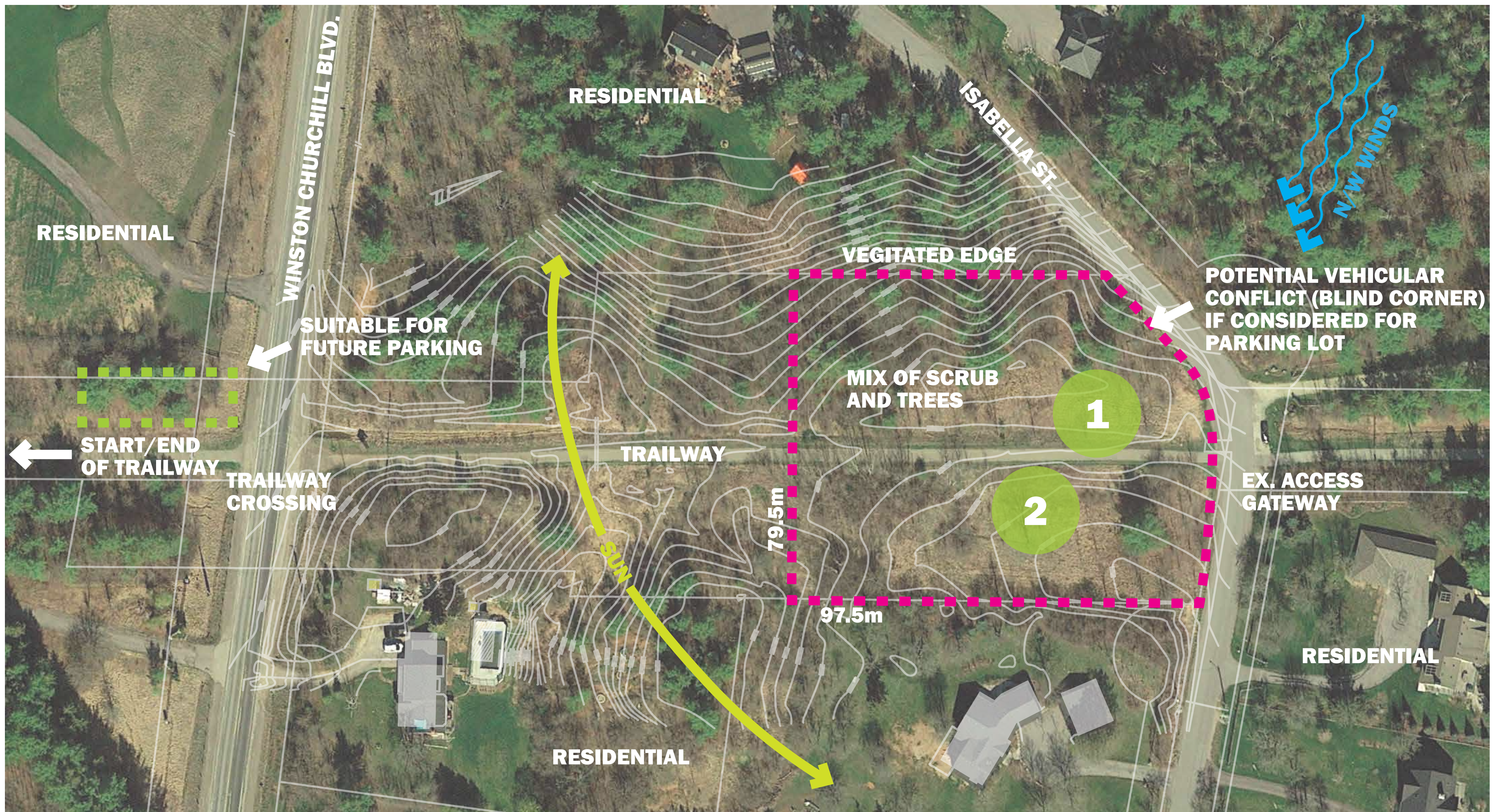
The Caledon Trailway's alignment follows that of the former Hamilton and Northwestern Railway, established in 1878. The Trailway takes advantage of the established alignment to provide similar connections across Caledon.



Terra Cotta Trail Head

Caledon Trailway

Site and Immediate Context



Site Description

The site is located approximately 450m from the southernmost access point on the Trailway. It is approximately 7700sqm in area. The proposed trail head will serve trail users as entry and rest stop, providing a glimpse of the ecological and cultural character of the area.

The site is bisected by the Trailway into almost two even parts. Presently, the site hosts a mix of scrub and trees. The site slopes west to east overall, with

linear depressions on either side of the path.

Currently, two locations (marked on the map as "1" and "2") within the site have the capacity to host a gathering space with a shade pavilion, seating, rain garden, and other attractive features. Each have their capabilities, however Location 1 seems to be most appropriate given the topographical context.

Option 1 Character

- Relatively flat topography
- Relatively simple to make accessible
- No sensitive plants
- Opportunity for storm water catchment
- Shade pavilion function increases during the afternoon
- Potential shelter from cold winds

Option 2 Character

- More experientially interesting
- More costly than Option 1
- More complex to make accessible
- White Pine and Elm adjacent, this can be a positive or negative
- Close proximity to neighbouring resident

