

# WELCOME

## Whispering Pines Stormwater Management Facilities Municipal Class Environmental Assessment

Public Information Centre

Corner of Jean Street and Cranston Drive, Caledon East

Tuesday October 15, 2019

4:30 pm - 6:30 pm

Site Walk at 5:00 pm

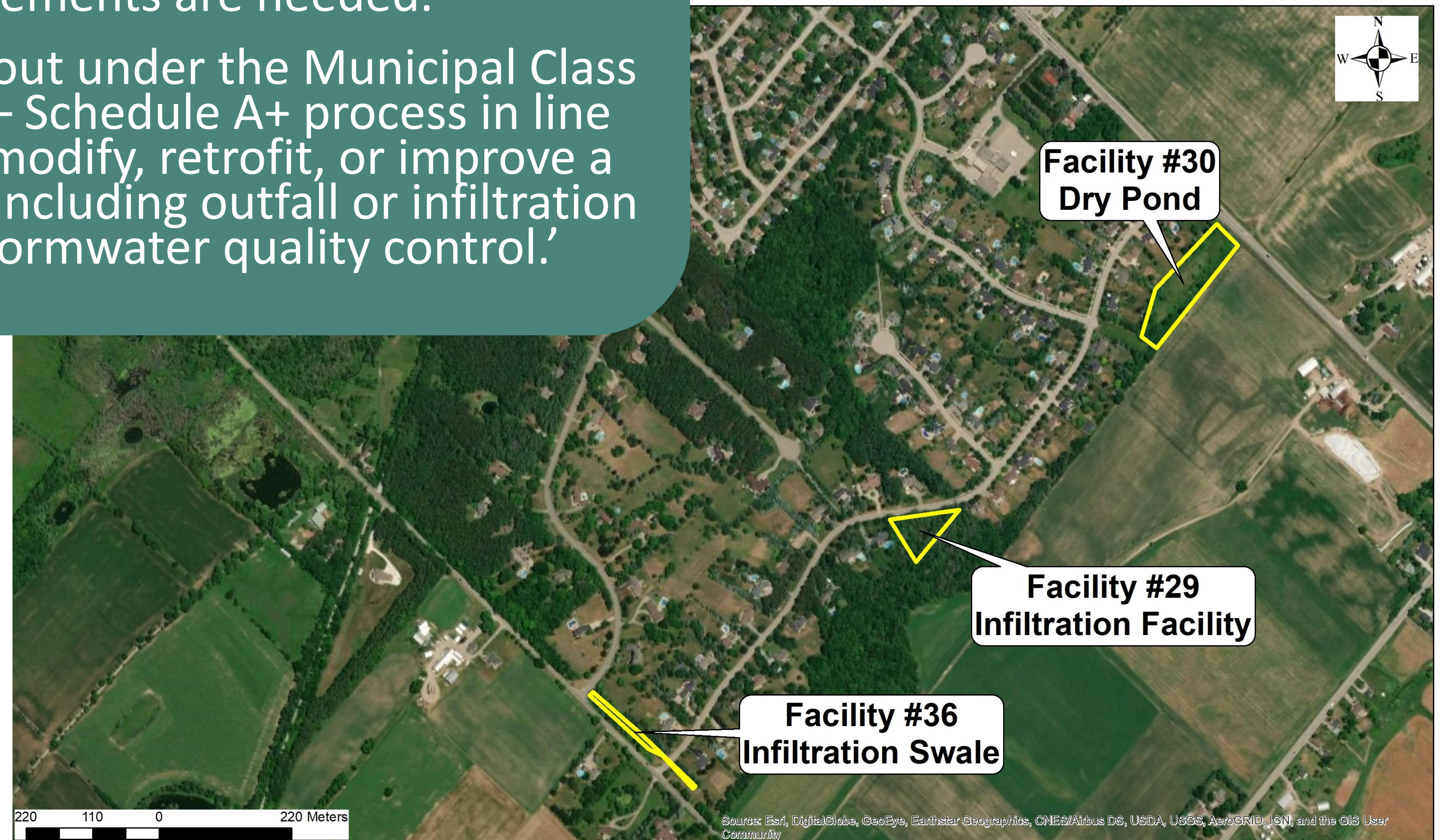
PLEASE SIGN IN AND TAKE A COMMENT SHEET





# Background

- The Town of Caledon is undertaking an Environmental Assessment for three (3) stormwater management (SWM) facilities along Cranston Drive in Caledon East. The 3 facilities will be evaluated to determine functional characteristics and if improvements are needed.
- The project is being carried out under the Municipal Class Environmental Assessment – Schedule A+ process in line with the expected work to ‘modify, retrofit, or improve a retention/detention facility including outfall or infiltration system for the purpose of stormwater quality control.’





# Project Summary

## SWM Facility #29 – Infiltration Facility

### Issues

- Originally designed in 1987 as a dry infiltration pond with a soak-away pit in the center, but has been observed as not functioning as designed.
- Ponding water has been observed in the facility throughout the year.

### Project Goal

- To determine if facility can be retrofitted to meet current standards for a stormwater management facility providing an enhanced level of protection and water balance.

## SWM Facility #30 – Dry Pond

### Issues

- Dry pond constructed over 30 years ago to provide quantity control for stormwater runoff, however observations reported by residents suggest that the facility is not receiving stormwater during rain events.

### Project Goal

- To assess performance of the facility and provide recommendations for operation, maintenance and/or rehabilitation.

## SWM Facility #36 – Infiltration Swale

### Issues

- Infiltration swale designed over 30 years ago to convey stormwater and provide infiltration.
- Facility is ponding water for extended periods of time and remains saturated for multiple days following rain events.

### Project Goal

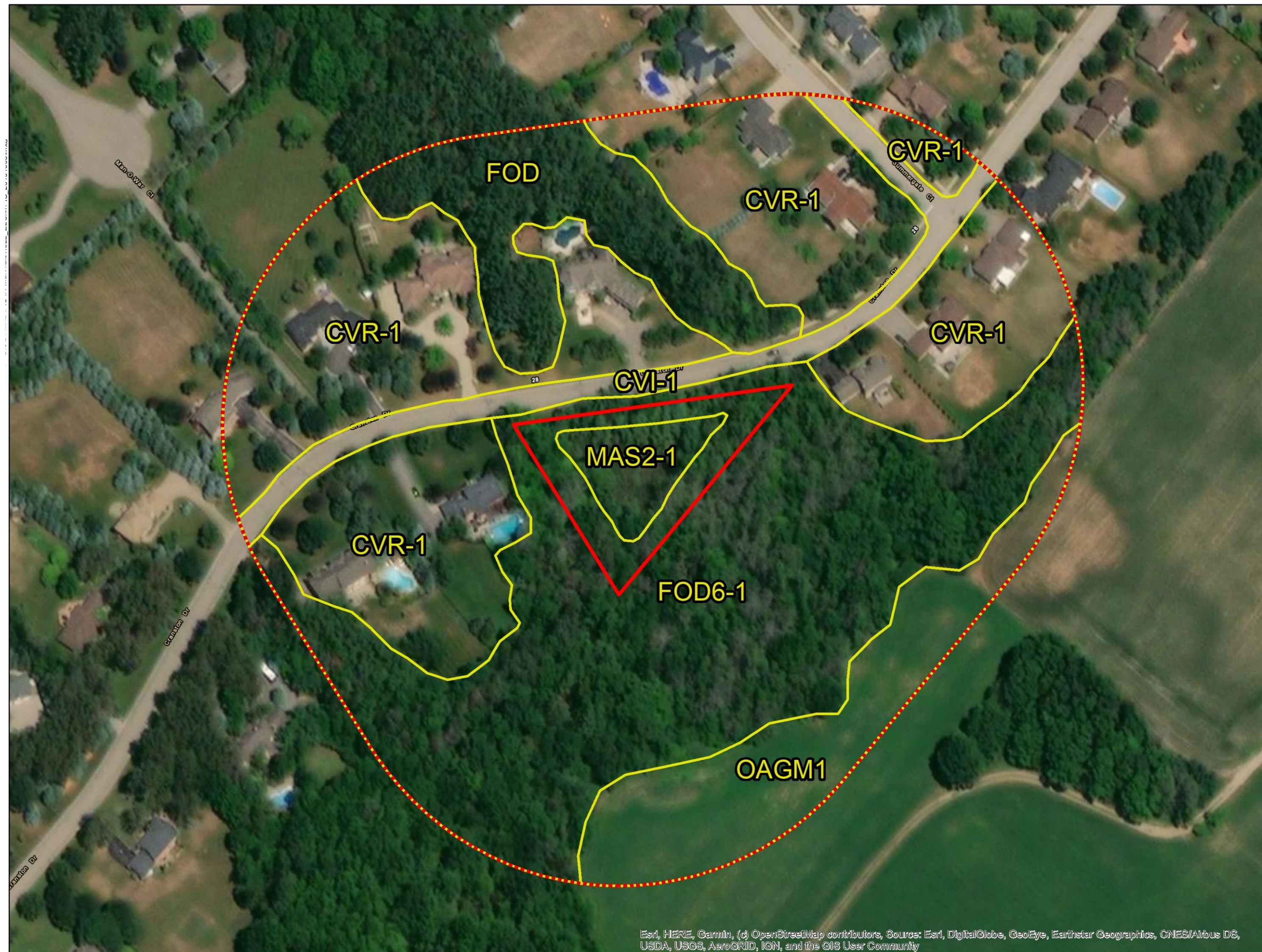
- Assess function of the facility and provide recommendations for operation, maintenance, and/or rehabilitation.





# Ecological Work Completed to Date

- Ecological Land Classification – used across Ontario to classify and describe ecosystems by delineating areas of similar ecology.
- Vegetation Inventory – has been completed for all 3 sites.
- Incidental Wildlife Observations.
- Aquatic Habitat Assessment is not required.



**Caledon Facility #29 Infiltration Facility Ecological Land Classification**

**Legend**

- Study Area
- Study Area (120 m buffer)

**ELC**

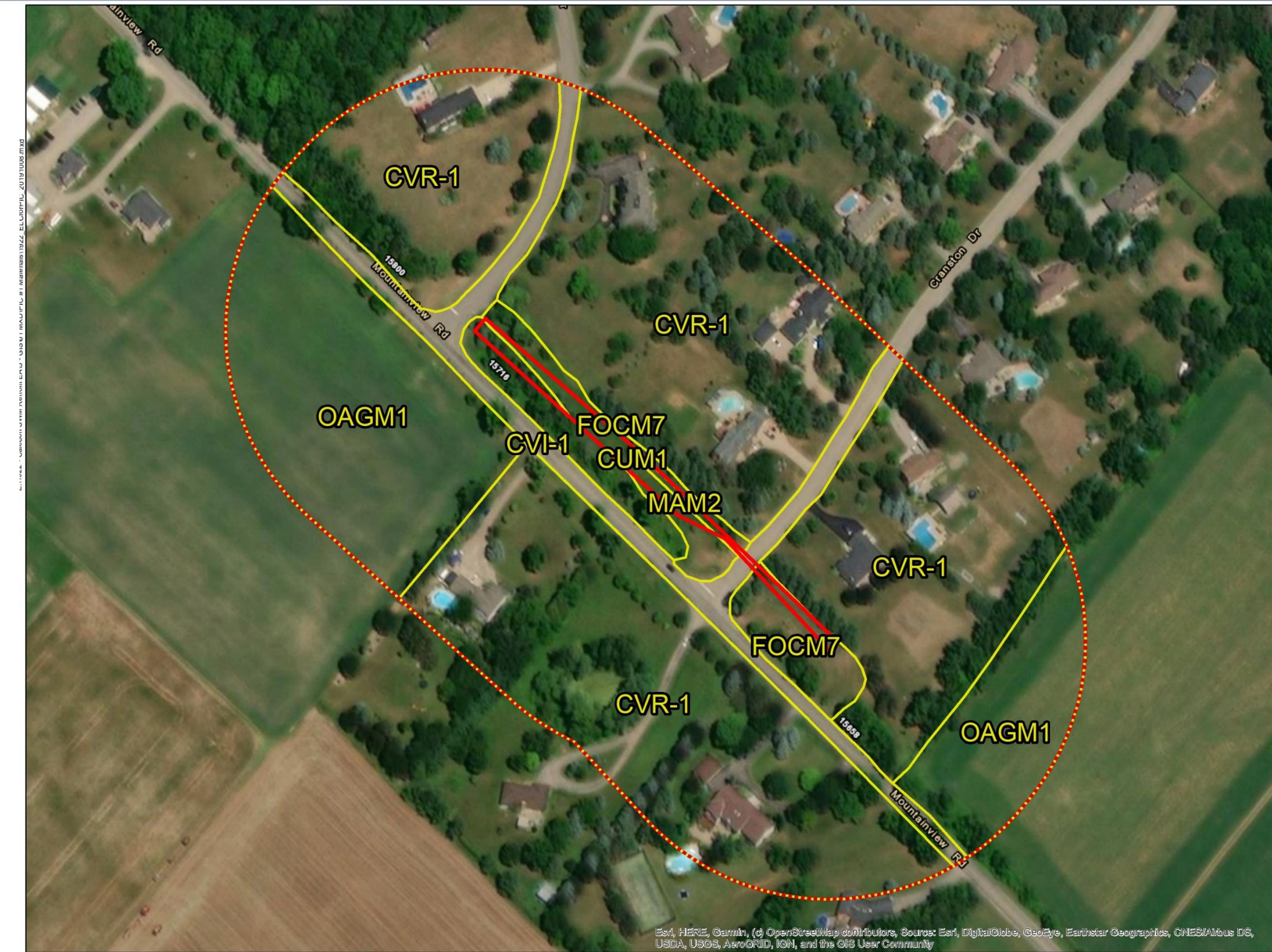
- CVI-1: Transportation
- CVR-1: Low Density Residential
- FOD: Deciduous Forest
- FOD6-1: Fresh Moist Sugar Maple Lowland Ash Deciduous Forest
- MAS2-1: Cattail Mineral Shallow Marsh
- OAGM1: Annual Row Crops

**ecosystem recovery inc.**  
PROFESSIONAL ENGINEERS

NAD 1983 UTM 17 1:1,500

Project: 1922 Caledon SWM Retrofit EA  
Date: 2019/10

Data Sources: Ecosystem Recovery Inc., 2019; City of Burlington RFP



**Caledon Facility #36 Infiltration Swale Ecological Land Classification**

**Legend**

- Study Area
- Study Area (120 m buffer)

**ELC**

- CUM1: Mineral Cultural Meadow
- CVI-1: Transportation
- CVR-1: Low Density Residential
- FOCM7: Naturalized Mixed Hedgerow
- MAM2: Mixed Mineral Meadow Marsh
- OAGM1: Annual Row Crops

**ecosystem recovery inc.**  
PROFESSIONAL ENGINEERS

NAD 1983 UTM 17 1:1,750

Project: 1922 Caledon SWM Retrofit EA  
Date: 2019/10

Data Sources: Ecosystem Recovery Inc., 2019; City of Burlington RFP



**Caledon Facility #30 Dry Pond Ecological Land Classification**

**Legend**

- Study Area
- Study Area (120 m buffer)

**ELC**

- CGL-2: Parkland
- CUT1: Mineral Cultural Thicket
- CVI-1: Transportation
- CVR-1: Low Density Residential
- FOD8-1: Fresh Moist Poplar Deciduous Forest
- MEMM4: Fresh Moist Mixed Meadow
- OAGM1: Annual Row Crops

**ecosystem recovery inc.**  
PROFESSIONAL ENGINEERS

NAD 1983 UTM 17 1:2,000

Project: 1922 Caledon SWM Retrofit EA  
Date: 2019/10

Data Sources: Ecosystem Recovery Inc., 2019; City of Burlington RFP



Town of Caledon  
Public Information Centre





# Work Underway

## SWM Facility #29 – Infiltration Facility

### Phase 1: Problem Identification Site Investigations & Analysis Involved

- Geotechnical field investigation
- Hydrogeological assessment
- Stage 1 and 2 Archaeological Assessments
- Topographic survey
- Detailed vegetation inventory
- Hydraulic and hydrologic assessment

### Phase 2: Solution Identification

- Alternative development
- Alternative evaluation
- Determine preferred alternative

### Phase 3: Design Concepts

- Preferred alternative design concept
- Develop preliminary cost estimates
- 30% detailed design
- Preliminary design report

## SWM Facility #30 – Dry Pond SWM Facility #36 – Infiltration Swale

### Phase 1: Performance Evaluation

- Geotechnical and hydrogeological investigation (Pinchin)
- Topographic survey
- Terrestrial and amphibian conditions
- Hydraulic and hydrologic assessment

### Phase 2: Operation, Maintenance, and Rehabilitation Requirements Identification

- Present list of potential issues and solutions
- Evaluate potential solutions

### Phase 3: 30% Design and Cost Estimates

- Recommend preferred solution
- Provide cost estimate
- Preliminary design report





# Consultation



Please complete a comment sheet and leave it here today, or return it to Cassie Schembri ([cassie.schembri@caledon.ca](mailto:cassie.schembri@caledon.ca)) by Friday October 25, 2019.

Should you have any questions or concerns at any time during the study, please contact either of the following people:

Wolfgang Wolter

Senior Project Manager

**Ecosystem Recovery Inc.**

80 Courtland Ave East, Unit 2

Kitchener, Ontario N2G 2T8

Phone: 519-621-1500

Email: [wolfgang.wolter@ecosystemrecovery.ca](mailto:wolfgang.wolter@ecosystemrecovery.ca)

Cassie Schembri

Senior Project Manager, Stormwater

**Town of Caledon**

6311 Old Church Road

Caledon, Ontario L7C 1J6

Phone: 905-584-2272 ext. 4258

Email: [cassie.schembri@caledon.ca](mailto:cassie.schembri@caledon.ca)



Town of Caledon  
Public Information Centre

