

Alton Village Study

Wastewater Servicing Component



ALTON VILLAGE STUDY



Wastewater Servicing Component

- The Region is undertaking a Class Environmental Assessment Study for providing Wastewater Servicing in Alton Village

ALTON VILLAGE STUDY



Class EA Process

PHASE 1 Identify problem or opportunity

We are here

**PHASE
2**

Identify and evaluate alternative solutions to the problem or opportunity
Public Information Centre
Select a preferred solution

**PHASE
3**

Identify and evaluate alternative design concepts for the preferred solution
Public Information Centre
Select preferred design concept

**PHASE
4**

Complete Environmental Study Report (ESR)
ESR placed on public record

**PHASE
5**

Complete contract drawings and tender documents
Proceed to construction and operation
Monitor for environmental provisions and comments

ALTON VILLAGE STUDY



Existing Wastewater Systems

- Currently wastewater generated in the Village is treated through on-site private disposal systems (septic systems)
- Effluent from these systems is discharged to the sub-surface

ALTON VILLAGE STUDY



Short Listed Wastewater Alternatives

Alternative 1:

Upgrade existing on-site private disposal systems and construct new on-site private disposal systems for new growth

ALTON VILLAGE STUDY



Short Listed Wastewater Alternatives

Alternative 2:

Construct new communal wastewater system to service existing residents and new growth

ALTON VILLAGE STUDY



Short Listed Wastewater Alternatives

Alternative 3:

Construct new communal wastewater system to service new growth and upgrade existing on-site private disposal systems

ALTON VILLAGE STUDY



Evaluation of Alternatives

- Alternatives were evaluated using 15 evaluation criteria to identify impacts on the natural, social/heritage, technical and economic environments
- Alternatives were scored against each criteria with a score of 1 assigned for insignificant impacts and a score of 5 assigned for significant impacts

ALTON VILLAGE STUDY



Alternative Scoring

Alternative/ Evaluation Criteria Group	Alternative No. 1	Alternative No. 2	Alternative No. 3
Natural Environmental Impacts	8	8	9
Social/ Heritage Environmental Impacts	18	12	18
Technical Impacts	9	5	5
Economic Impacts	8	13	18
Total Alternative Score	43	38	50

ALTON VILLAGE STUDY



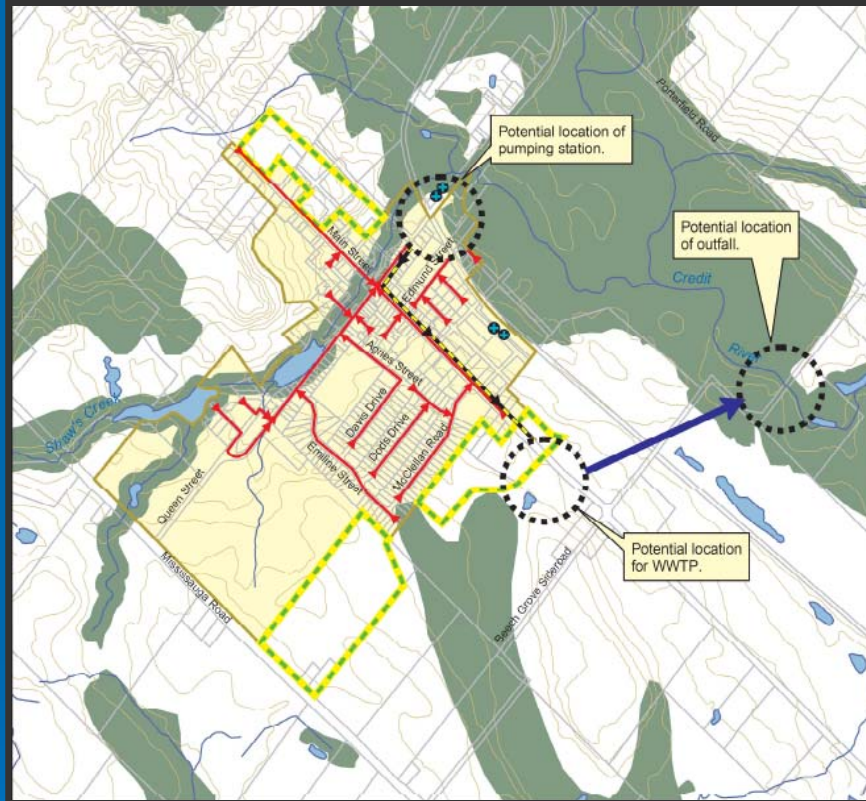
Recommended Preferred Alternative

- Based on the evaluation results, the recommended preferred alternative is a new communal wastewater collection and treatment system to service both existing and new growth

ALTON VILLAGE STUDY



Recommended Preferred Alternative



- Key Elements
 - New sewers
 - New pumping station and forcemain
 - Best Available Technology treatment plant
 - New treated flow outfall sewer to Credit River
- Final location of major facilities (pumping stations, treatment plant, outfall) to be determined in Phase 3 of the EA study.

ALTON VILLAGE STUDY



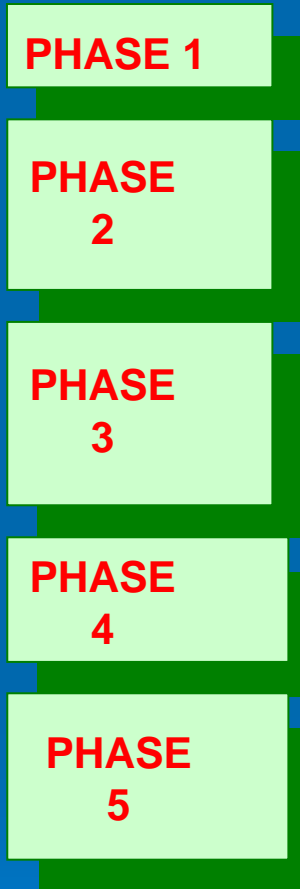
Recommended Preferred Alternative

- Implementation of a preferred alternative will not proceed without a number of technical approvals from the relevant approval agencies and funding approvals
- Funding mechanisms will be explored and evaluated in Phase 3 of this project.

ALTON VILLAGE STUDY



Next Steps



1. Select a preferred alternative based on our findings and public input
2. Develop and evaluate alternative design concepts for the preferred alternative
3. Select and present a recommended preferred alternative design concept to the public for input
4. Finalize selection of the preferred alternative design concept based on public input

ALTON VILLAGE STUDY



Timelines

➤ Assimilative Capacity Study

- Consultation with the Ministry of Environment, Credit Valley Conservation and other Regulatory Agencies

Expected to be completed in approximately one year

ALTON VILLAGE STUDY

