



Patti Foley

Region of Peel
Working for you

6311 Old Church Road,
Caledon, ON L7C 1J6

Home: 905-951-6128
patti.foley@caledon.ca

Autumn 2011

Regional Councillor, Ward 5, Caledon

Dear neighbours,

What could be more exciting than campaigning to represent the community you love? Winning and being given the opportunity to work for positive change in that community! It has been an exhilarating start to my first term in office and you'll see a lot of exciting things happening in Bolton over the next few years.

In this newsletter you'll read about infrastructure projects such as the elevated water tank and feedermain which will improve water storage and pressure, while leaving more attractive streetscaping in its wake.

I'm very proud to announce Region of Peel's unique Climate Change Strategy to help us mitigate damages and adapt to the effects of global warming. You'll also find information inside on water efficiency rebate programs, how to minimize blue box contamination and what to do with hazardous waste.

The TRCA's acquisition of the old Bolton Camp opens the door to wonderful possibilities for future uses of this forgotten jewel on Bolton's east side.

Having the advantage of nearby farms I encourage you to visit our Farmers' Markets this fall. You'll benefit from the flavour and nutrition of freshly-picked produce while supporting our area farmers. Everyone wins!

I continue to blog about issues I feel are important to Bolton residents and I invite you to sign up and follow along at PattiFoleyWard5.wordpress.com

Connecting People. Bridging Differences. Building Community.

Peel's one-of-a-kind Climate Change Strategy

On Thursday, June 23, Peel Regional Council adopted a Climate Change Strategy with important implications for the future of our communities. It is the first strategy in Canada to bring together a Regional government with its area municipalities and conservation authorities for local action on environmental issues.

Together with its partners, the City of Brampton, Town of Caledon, City of Mississauga, Credit Valley Conservation and the Toronto and Region Conservation Authority, the Region is demonstrating real leadership by committing to local action to combat the global challenge of climate change.

The strategy focuses on both mitigation and adaptation measures. Mitigation strategies, such as tree planting to isolate carbon, help to slow the rate of climate change. Adaptation strategies, such as improving stormwater systems to prevent flooding, help prepare and protect communities from inevitable impacts.



Key goals include increasing public awareness about the effects of climate change, and reducing greenhouse gas emissions by 80 per cent below 1990 levels by 2050. Peel and its partners are committed to meet this science-based target put forth by the United Nations Intergovernmental Panel on Climate Change.

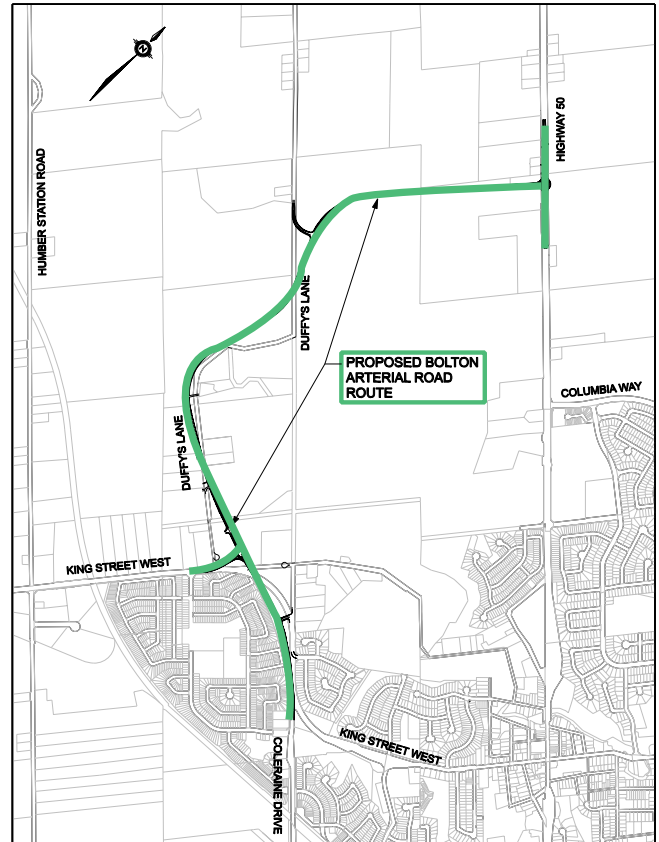
Learn more at peelregion.ca/planning/climatechange

Bolton Arterial Road extension

The Bolton Arterial Road (BAR) extension will help ease traffic that passes through Bolton. Road and pedestrian safety is always a priority. Through-traffic should see an improved flow, while residents may appreciate the anticipated lighter traffic through its Highway 50 core.

- The north end of Coleraine Drive to King Street is being designed as an urban road. This portion will be four lanes wide with a raised median, and built in a 45 metre right-of-way.
- King Street to Regional Road 50 will be a new road, designed as a rural cross-section. This portion of the roadway will be two lanes wide and built in a 36 metre/45 metre right-of-way.

Design is anticipated to be complete by fall 2011. Property acquisition has started, and will be completed over the next several months. Construction will start in 2012, and is expected to be finished fall 2013.



Bolton CRC under construction

But open for business!

The Bolton Community Recycling Centre (CRC) will be under construction from September 2011 to April 2012.

The CRC will be modified to maintain service to residents during the construction period. An area will be fenced off to accommodate construction activities.

Bins for various waste materials will be placed on the roadway surrounding the Caledon Community Services ReUstore.

Due to restricted space, wait times may be longer than usual at the CRC, and parking is limited.

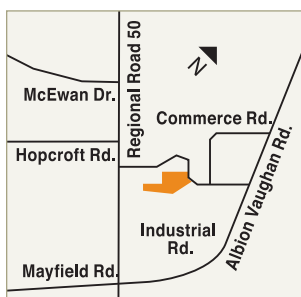
The weigh scales may not be operational during this time, and a flat disposal fee will be implemented as follows:

- \$2 for a car or minivan
- \$4 for a car or minivan with trailer
- \$5 for a pickup truck or larger vehicle
- \$7 for a pickup truck or larger vehicle with trailer

The following items are accepted free of charge:

- dedicated loads of residential leaf and yard waste (Caledon and Bolton CRCs only)

- dedicated loads of large metal appliances and fixtures (residential customers only)
- dedicated loads of Blue Box materials
- dedicated loads of non-commercial passenger and light truck tires
- household hazardous waste
- reusable goods



Bolton Community Recycling Centre
109 Industrial Rd, Bolton L7E 1K5
Hours: Tues to Sat, 8:30 a.m. - 4:30 p.m.



Bowl for Kids Sake
 Regional Councillor Patti Foley (left) and Mayor Marolyn Morrison participated last spring in the Big Brothers Big Sisters of Peel "Bowl for Kids Sake" fundraiser. The event raised over \$13,000.

New water tank and feedermain in Bolton

The new elevated water tank and feedermain will provide water storage for pressure stabilization, firefighting, and emergencies for existing and approved planned population growth in Bolton, including the north part of Brampton, south of Mayfield Road.

A number of site configurations for the tank, access route and location for the connecting feedermain in/out of the tank have been reviewed by the Region.

The feedermain route through the Bolton core is the preferred solution not only because it is the most technically feasible option, but also because of the benefits for road improvement and community enhancement that it will generate during construction.

Co-ordination between the Town of Caledon and Region of Peel

The Town of Caledon is currently working on several projects along the proposed Bolton feedermain route, and the Region of Peel is working with the Town to co-ordinate construction. This will help ensure all planned projects happen at the same time to avoid disruption for residents, businesses and traffic.

Environmental Assessment process

This project is in Phase 3 of the Class Environmental Assessment (EA) process. An Environmental Assessment is a clear and transparent planning process that includes the review of project impacts. The term 'environmental' includes natural, socio-economic, cultural, transportation and cost implications for the project.

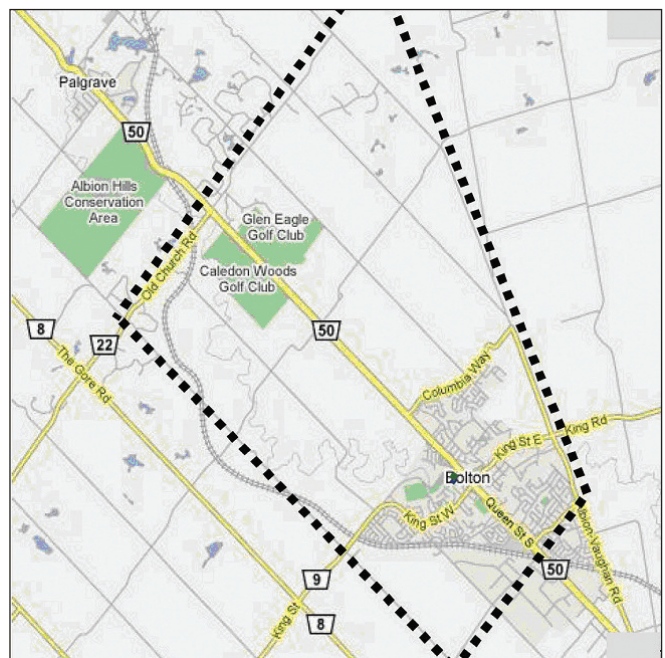
Phase 3 involves the identification of alternative design concepts for the location of the elevated tank and feedermain. Phase 4 involves the completion of the Environmental Study Report, which will summarize the results of Phases 1 to 3 and describe the process that was followed.

Next steps

A third Public Information Centre was held in June 2011, where the recommended tank design on the preferred site and the preferred feedermain route alignment was presented by Peel Regional staff. Town of Caledon Public Works staff provided an update on the reconstruction of Ann Street, including Phase 2 of the Bolton West downtown parking lot and the southwest Humber River parkette.

Public comments were accepted until mid-June. An Environmental Study Report (ESR) will be filed this fall/winter pending property acquisition. If there are no significant issues during the 30-day public review of the ESR, the Region will begin detailed design of the tank and the feedermain in winter 2011/2012, and begin construction in 2012.

Potential sites for the new tank	Potential routes for the connecting feedermain
3 Manchester Court	Route 1: predominantly along the future Bolton Arterial Road and Highway 50
13304 Coleraine Drive	Route 2: predominantly across sensitive Humber River Valley forest lands, and Highway 50
13352 Coleraine Drive (preferred solution)	Route 3: predominantly through the Bolton core and Highway 50 (preferred solution)



Study area for the Bolton Elevated Water Tank and Feedermain Class Environmental Assessment

Use water wisely

Water efficiency rebate programs for Peel residents and businesses

Residential Programs

Toilet Replacement Program

A \$60 rebate is available for residents who replace inefficient toilets with Peel-Approved water efficient models.

The rebate can be applied to:

- Single-flush toilets with less than or equal to 4.8 litres per flush
- Dual-flush toilets that have both:
 1. A reduced flush volume of less than or equal to 4.1 litres
 2. A full flush volume of less than or equal to 6 litres

Humidifier Rebate Program

Provides Peel residents and property owners with rebates when they purchase a Peel-Approved water efficient furnace-mounted humidifier.

The rebate program provides:

- \$30 rebates on humidifiers that send less than 50 litres of water to the drain per day
- \$70 rebates on high-efficiency humidifiers that send less than 10 litres of water to the drain per day

Business Programs

Indoor Water Audit Program

A monetary rebate is offered to industrial, commercial, and institutional facilities interested in participating in the Indoor Water Audit Program for Businesses. The program identifies areas of potential average daily water savings that may be achieved through a permanent process change.

Outdoor Water Audit Program

An irrigation system water audit and potential monetary rebate is being offered to participating businesses. The program identifies areas of potential peak day water savings that may be achieved through irrigation system upgrades.

Business Toilet Replacement Program

Rebates of \$60 or \$140 are offered to businesses and property owners who replace inefficient toilets (13 or 20 litre) with Peel-Approved water-efficient toilets that flush with 6 litres or less.

Visit watersmartpeel.ca for more information about residential and business programs.

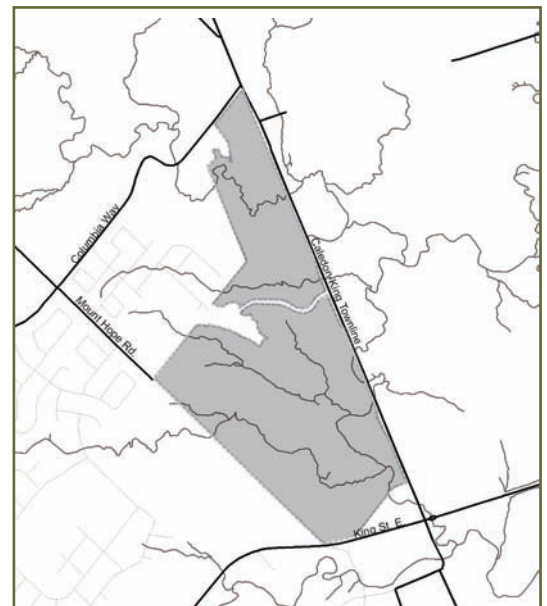
TRCA news: Bolton Camp lands

Toronto and Region Conservation Authority (TRCA) uses land acquisition as a tool to protect environmentally significant natural heritage lands; to regenerate and rehabilitate degraded areas; and to provide relief from flood and erosion hazard.

Recently, TRCA acquired 103 hectares (254 acres) known as Bolton Camp from Hi-Lands of Bolton. The property is located between King Street East and Columbia Way on the west side of the Caledon-King Townline. TRCA is considering opportunities for future use of the property.

The property is the site of the former Bolton Camp, run by the Family Service Association of Metropolitan Toronto. Bolton Camp was founded as a Fresh Air Camp for mothers with small children, boys and girls from low income families in 1922. Additional properties were acquired in 1933, 1937, 1938 and 1947. Between 1968-71, the camp was rebuilt with partial use as the Bolton Conference Centre. The camp was eventually sold in 2000 to Toronto Montessori Schools (279 acres) and Camp Villas (60 acres). In 2008, Toronto Montessori Schools sold the site to Hi-Lands of Bolton. Hi-Lands of Bolton has maintained ownership of a small portion of the Bolton Camp property for development purposes.

Visit trca.on.ca for more information.



Reduce blue box contamination and waste

The Region of Peel manages approximately 500,000 tonnes of waste (garbage, recyclable material and household hazardous waste) each year. This waste is generated by more than 400,000 Peel households and can fill approximately 62,000 curbside garbage trucks!

As our population grows, so does the amount of waste we generate. And in the past few years, so has the amount of non-recyclable material being placed in blue boxes. Refer to wheredoesitgo.ca or your *Waste Management Guide* to ensure that you're only placing recyclable items in your blue box or recycling bag.

In an effort to reduce contamination in the Blue Box program, the Region will be leaving obvious non-recyclable items at the curb. Also left behind will be recyclable items that are placed in garbage, grocery or shopping bags – the contents of these bags can't be easily identified at the curb and can't be sorted at the recycling facility.

Learn more about how you can reduce and reuse your waste at peelregion.ca/waste



wheredoesitgo.ca

A lot of your waste can be recycled. Enter the item you want to dispose of and we'll tell you how.

... paper gift wrap ...

The composite multi-layered packaging is not recyclable. Please place this item in the garbage.

Reduce and Reuse

Peel's steady population increase contributes directly to the increased waste tonnages in the region each year. In an effort to manage this aspect of growth that affects Peel's waste management services and to reduce the amount of waste being sent to landfill, the Region wants to make residents aware about the importance of reduce/reuse.

- Reduce waste by buying items with less packaging and buying fewer single-use items
- Reuse materials before recycling or discarding them, and donate gently used items

Household hazardous waste disposal

Many of us have a can of old paint sitting in our basement, or a jug of leftover motor oil in the garage that we're not exactly sure how to dispose of properly.

We all know that household hazardous waste must never be disposed of in garbage or recycling containers, or poured down the drain because it can negatively impact our environment.

Instead, bring it to any of the Region's Community Recycling Centres for safe disposal, free of charge. Our recycling centres accept a wide variety of household hazardous waste products, such as: paint, pesticides, motor oil, pharmaceuticals, cleaners, chlorine, pool chemicals and much more.

For a full list of accepted items, refer to your *Waste Management Guide* or visit peelregion.ca/waste

Also, as part of the Government of Ontario's Orange Drop program, you can take back certain hazardous waste material to the retailer where it was purchased. To find out what material you can take back and where your nearest participating retailer is located, visit makethedrop.ca

Proper disposal of household hazardous waste helps keep our air, water and soil clean.



Peel Public Works now on Twitter

Peel Public Works is committed to keeping you up to date. If you have a mobile Twitter app on your phone, receive our Tweets while on the go!

We will Tweet on:

- Emergency road closures and watermain repairs
- Construction and project announcements
- Updates on service changes and emergencies
- Waste collection delays and holiday schedules
- New programs and promotions
- Notices and public meetings

Follow us at twitter.com/peelpublicworks

Buy local

Find farms and markets near you

For six years, the *Grown in Peel Guide* has received an overwhelming response from residents and local agencies in Peel.

The 2011 guide features a new layout and design with over 30 farms and farmers' markets, and numerous picnic and conservation areas.

Last year almost 40,000 copies of the guide were distributed at libraries, schools, fall fairs, Peel Children's Water Festival, and the Good Food Festival.

The guide helps residents find local farms and farmers' markets within Peel, improve access to nutritious food, and support our farming community. It has an easy-to-read map with locations, available products, and a legend that highlights the seasonal availability of nearly 50 vegetables and fruit.

Visit GrownInPeel.ca to find a farm or market near you, discover what's in season, and join events. To request a printed copy of the *Grown in Peel Guide*, email growninpeel@peelregion.ca



Caledon Farmers' Markets

June 16 – Oct. 6, 2011

Bolton: 150 Queen St., S.
(Albion Bolton Community Centre)
Thursdays, 3 – 7 p.m.

Inglewood: 15596 McLaughlin Rd.
(Inglewood General Store)
Wednesdays, 3:30 – 7 p.m.

Working for You

Charting our course: Delivering the right services to the right people at the right time

The Region of Peel ensures its services are delivered efficiently, effectively and affordably. The annual *Budget* supports the resources needed to execute Council's *Strategic Plan* and *Term of Council Priorities*. It demonstrates the Region's goal to address community needs in a fiscally responsible way, while ensuring services are affordable. Planning decisions consider economic, social and environmental conditions to ensure the right services are delivered to the right people in the right way.

The Region's services align with Council priorities and desired outcomes, addressing the most urgent needs of Peel's growing, culturally diverse and aging population.

- 13,899 families and individuals receive Ontario Works financial assistance and job supports
- 43 ambulances are on the road at peak times to respond to 80,000 9-1-1 calls
- 428,908 accessible transportation trips increase mobility for thousands of residents
- 16,205 families receive rent-g geared-to-income support
- 7,500 families are able to access subsidized child care spaces
- 1,551 lane kilometres of roads, 110 bridges, 39 major culverts and 416 signalized intersections move people and goods efficiently

- 486,629 tonnes of waste is managed to ensure the smallest environmental impact
- 703 beds or the equivalent of 250,180 resident days of care are available in five long-term care centres
- 63,000 children are screened for dental health
- 239,685 immunization records are reviewed
- 10,850 children are assessed through the Healthy Babies Healthy Children program
- 91,000 catch basins are treated for West Nile virus
- 600 million litres of wastewater is collected and treated each day for about 286,000 customers
- 580 million litres of municipal water is treated, transmitted, and distributed each day to over 292,000 retail and wholesale customers
- Conservation Authorities protect and manage water resources, wetlands and forests, provide educational and recreational opportunities, preserve Peel's natural heritage features
- Police services increase the safety of people and property in Peel

Visit peelregion.ca/corpserv/stratplan to find out how the Region is charting a course to achieve its long-term vision for Peel.



OPP partners with community

For three consecutive years, Caledon has been named the “Safest Community in Canada” by *Macleans* magazine. The key to this success is the positive relationships the OPP has developed with community-based programs and volunteer groups, including Town Council staff. These partnerships are essential to understanding the needs of the community, allowing us to respond with a customized approach to policing services.

Students reclaim graffiti space

Painting over graffiti often just gives vandals a fresh surface to deface. A different approach was taken recently when

officers partnered with students and staff from Robert F. Hall Catholic Secondary School. Shortly before the end of the school year, 27 students spent a week at the Bolton skateboard park painting over the offending graffiti with murals. The response from local kids who use the park has been positive – and happily the vandals have left the murals alone.

Graffiti is deliberately damaging. Defacing public property is a criminal offence and will not be tolerated by the Caledon OPP.

As a parent, you can help by watching for:

- Black permanent markers or a collection of spray cans and nozzles often kept in a backpack
- Heavily “tagged” property at home, including furniture and/or rooms
- Piece books (where graffiti ideas are sketched and practiced)
- Spray paint residue on fingers and clothes
- An interest in graffiti magazines and videos

Visit opp.ca for more information.

Report any suspicious behaviour you hear or see – especially late at night. Call 1-888-310-1122, or Crime Stoppers at 1-800-222-TIPS (8477), or submit information online at peelcrimestoppers.ca

Keep your family safe while using the Internet

The crime prevention experts at Peel Regional Police have designed a certificate program for parents and caregivers to teach you how to help keep your children and family safe while using the Internet.

During the free Cyber Academy program, participants will learn about:

- Computer safety (passwords, firewalls, viruses, spam)
- Technological crime (wireless router set-up, security, computer safety, risks)
- Social media
- Distracted driving (texting and driving)
- Child exploitation (child pornography, online luring, cyber-dating)
- Cyber-bullying (bullying on digital mediums, computer, cell phone, records, evidence)
- Cyber-fraud (identity theft, phishing, electronic banking, credit checks, mail tampering)



- Media addiction
- Predators (how cyber-pedophiles target, track and identify potential victims)

The program will take place at the Emil V. Kolb Centre for Police Excellence at 180 Derry Rd. in Mississauga on Wednesdays from 7 – 9:30 p.m. beginning Oct. 5 for five weeks.

Due to the subject matter, participants must be 18 years of age or over. All five sessions must be attended to receive a certificate.

Seating is limited. Register today – call 905-453-3311 ext. 4021 or email cyberproofed@peelpolice.ca

For more information, visit peelpolice.ca

Have Your Say at **Peel Asks Why?**.ca

Why do residents of Peel wait longer for provincially-funded community services than other Ontarians? The Region's 2011 Provincial election advocacy campaign, Peel Asks Why, is drawing attention to this very question.

Consider that:

- More than 3,600 of our children are waiting for a subsidized child care spot
- 15,000 households in Peel are waiting up to 15 years for an affordable housing unit
- Peel residents wait one to two years for intensive case management services

These wait times are among the longest in Ontario. Provincial funding for community services, like affordable housing, child care, mental health, as well as services for persons with disabilities and children with special needs, has not kept pace with Peel's population growth.

The Region of Peel believes that its residents deserve better. That's why we created the **PeelAsksWhy.ca** website – a platform for residents to get the facts and have their say. Together, we can make wait times in Peel a priority issue in the 2011 provincial election.

Visit the website to find out more, connect with candidates and join the discussion on our social media pages.

Community Contacts

Patti Foley905-951-6128
pattifoleyward5.wordpress.com

Region of Peel905-791-7800
peelregion.ca

Waste Management905-791-9499
Water and Wastewater Billing905-791-8711
Health Line Peel905-799-7700
Ontario Works905-793-9200

Town of Caledon905-584-2272
caledon.ca

Caledon Centre for Rec. & Wellness ...905-857-3313
Seniors Centre905-951-6114
Caledon Public Library905-857-1400
caledon.library.on.ca
Caledon Fire (non-emergency)905-584-2272

Caledon O.P.P.

Bolton905-857-3304
Crime Stoppers1-800-222-TIPS
Caledon/DufferinVictimServices905-951-3838

Caledon Community Services905-951-2300
Caledon Meals on Wheels905-857-7651
Caledon Parent-Child Centre905-857-0090
Hospice Caledon905-951-3534
Telehealth Ontario1-866-797-0000

ROAD WATCH | roadwatchcaledon.ca
Volunteer Caledon | volunteer-caledon.org
Bolton BIA | mybolton.com

Patti Foley sits on the following Region of Peel committees on behalf of Caledon residents:

- 3-1-1 Liaison Committee
- Community Investment Committee
- Greenlands Securement Subcommittee
- Housing Options for Older Adults in Peel
- Intergovernmental Relations Advisory Committee
- Peel Agricultural Advisory Working Group
- Peel Housing Corporation Board of Directors
- Peel Region Police Internet Safety Committee
- Toronto and Region Conservation Authority - Humber Watershed Alliance
- Waste Management Committee

